

214a-15 Raglan Sleeve Pullover



Suggested yarn:

- Pierrot Yarns Loiseau Blue [100% merino; 79yds/72m per 1.41oz/40g skein]; color #08 bar grey, 17 skeins [650g]

Tools/Notions:

- 3.9mm (approx. US 6) and 4.5mm (US 7) knitting needles or sizes necessary to achieve gauge
- 3.9mm (approx. US 6) double-pointed knitting needles or size necessary to achieve gauge
- cable needle

Finished measurements:

- bust 92cm/36.22"
- center back neck-to-cuff 74cm/29.13"
- back length 65cm/25.59"

Gauge:

- pattern stitch A: 23 sts and 26 rows = 10cm/4" square
- pattern stitch B: 20 sts = 7cm/2.76" and 26 rows = 10cm/4"

Gauge may vary according to individual knitting style. Change needle size if necessary to achieve gauge. Alternatively, rework pattern with your own gauge measurements.

Summary

Back: Cast on with crochet provisional cast-on method. Work in pattern stitch A. Shape raglan edge by first binding off stitches as indicated (for underarm gusset area), then work fully fashioned decreases 3 stitches in from the edge.

Front: Begin as for back, but work center panel in pattern stitch B.

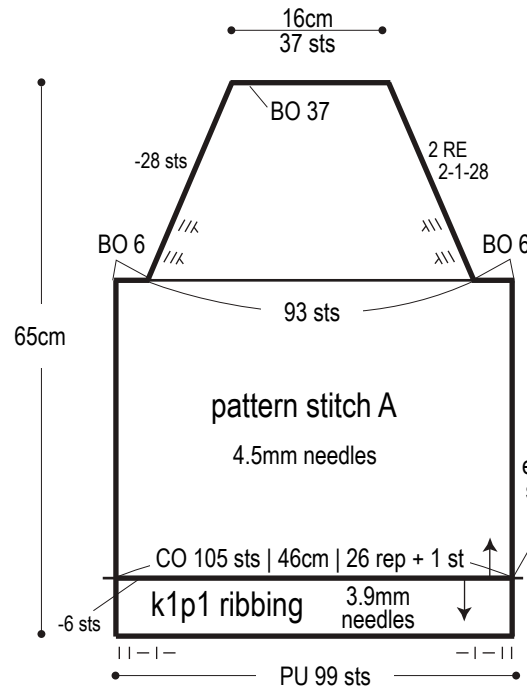
Sleeve: Begin as for back, then work in pattern stitch A. Shape raglan edge by working fully fashioned decreases 3 stitches in from the edge.

Finishing: Pick up live stitches from hem and cuff edges, respectively; work edging in k1p1 rib. Bind off in pattern. Seam raglan edges with mattress stitch, but seam underarm gusset area with Kitchener stitch. Seam sleeves starting from underarm area with mattress stitch. Pick up stitches around neckline; work collar in k1p1 rib in the round. Bind off in pattern.

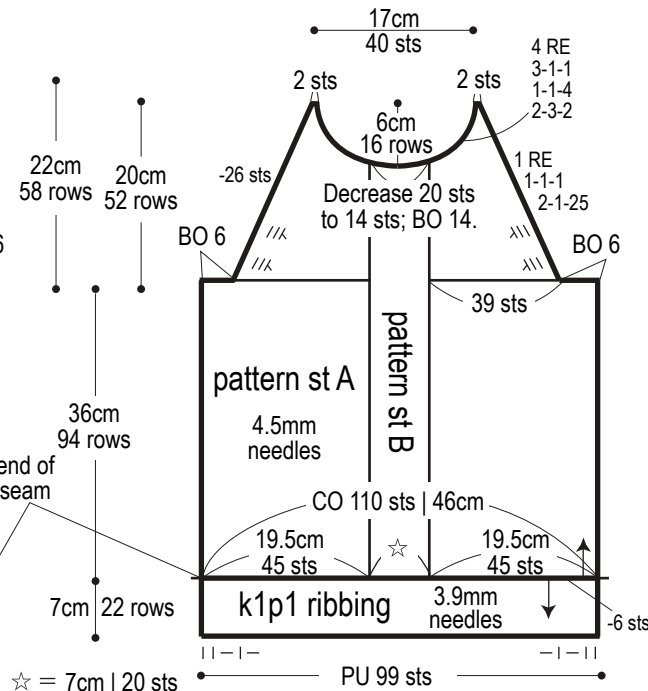
Abbreviations:

BO = bind off CO = cast on k = knit p = purl PU = pick up RE = row(s) even rep = pattern repeat(s) #-#-# = rows-stitches-times

Back

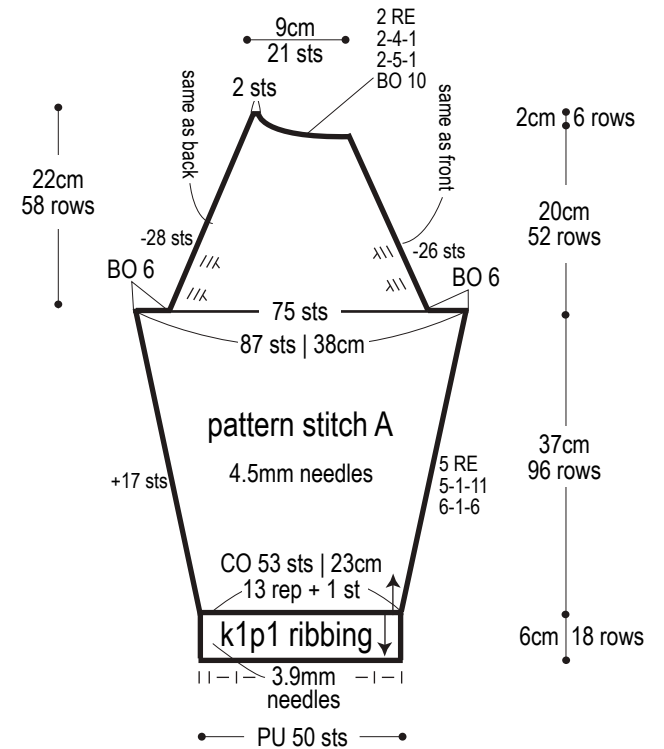


Front

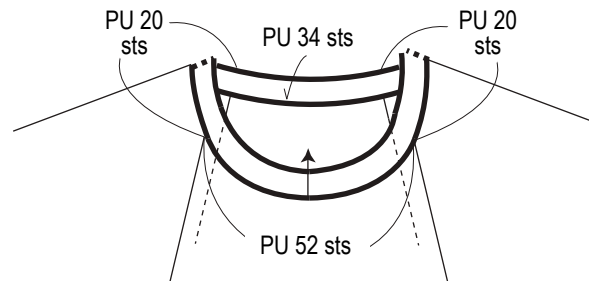


Right sleeve

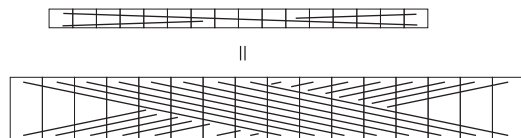
※Reverse shaping for left sleeve.



Collar: k1p1 ribbing 3.9mm DPNs



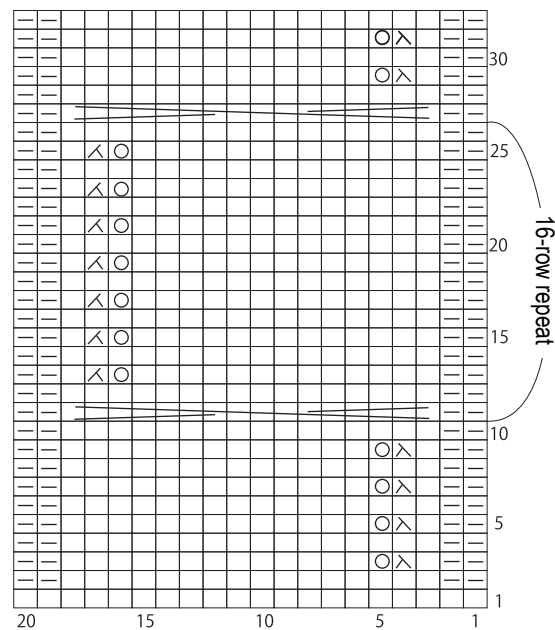
C16F cable



Pattern stitch B

4.5mm needles

□ = □ knit



Use this QR code on a smartphone to view a video about how to work pattern stitch A.

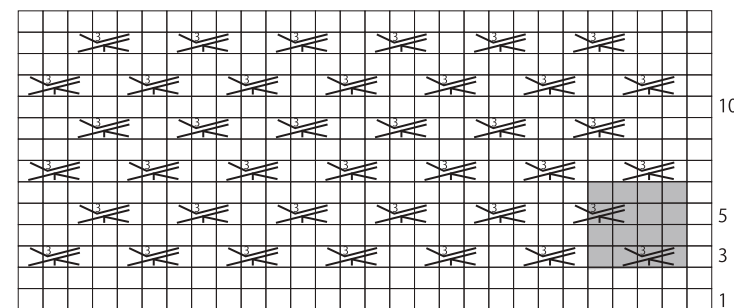


※To view on computer, search on the Pierrot Yarns website or YouTube channel instead.

検索

Pattern stitch A

□ = □ knit



■ = 4 sts & 4 rows (1 repeat)

front: continue from pattern stitch B ↑ start body, sleeve