

21-11 Diagonal Turtleneck Sweater



Suggested yarn:

- Pierrot Yarns Cotton 700 [100% cotton; 197yds/180m per 1.41oz/40g skein]; color #685, 8 skeins [290g]

Tools/Notions:

- 3.0mm (US 3) and 3.5mm (approx. US 5) knitting needles or sizes necessary to achieve gauge
- 3.0mm (US 3) circular knitting needle or size necessary to achieve gauge

Finished measurements:

- bust 84cm/33.07"
- cross back width 34cm/13.39"
- back length 56cm/22.05"

Gauge (10cm/4" square):

- stockinette stitch: 25 sts and 36 rows
- pattern stitch: 38 sts and 36 rows

Gauge may vary according to individual knitting style. Change needle size if necessary to achieve gauge. Alternatively, rework pattern with your own gauge measurements.

Summary

✿**Note:** entire garment worked with 2 strands of yarn held together.

Back: Cast on with 2x2 tubular cast-on method, then work in k2p2 ribbing. Change to stockinette stitch. Shape armscye by binding off stitches as indicated and then by working fully-fashioned decreases 4 stitches in from the edge. Shape neckline by working decreases at edges (of neckline) and leaving indicated number of stitches on stitch holder.

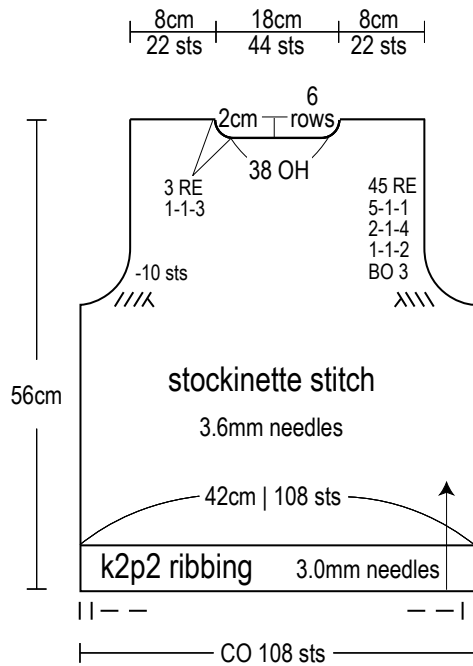
Front: Cast on as for back. After working ribbing, work in stockinette stitch and pattern stitch, increasing 9 stitches in pattern stitch section. Shape armscye and neckline in the same manner as back. For pattern stitch section, shape right shoulder (where marked for evenly spaced decreases) as follows: where at edge of cable stitch where indicated, decrease at upper side and lower side using k2tog. In total, decrease 9 stitches evenly spaced across the pattern stitch section.

Finishing: Seam shoulders with three-needle bind-off. Pick up stitches around neckline, then work collar in k2p2 ribbing in the round. Bind off with 2x2 tubular bind-off method. Seam sides with mattress stitch.

Abbreviations:

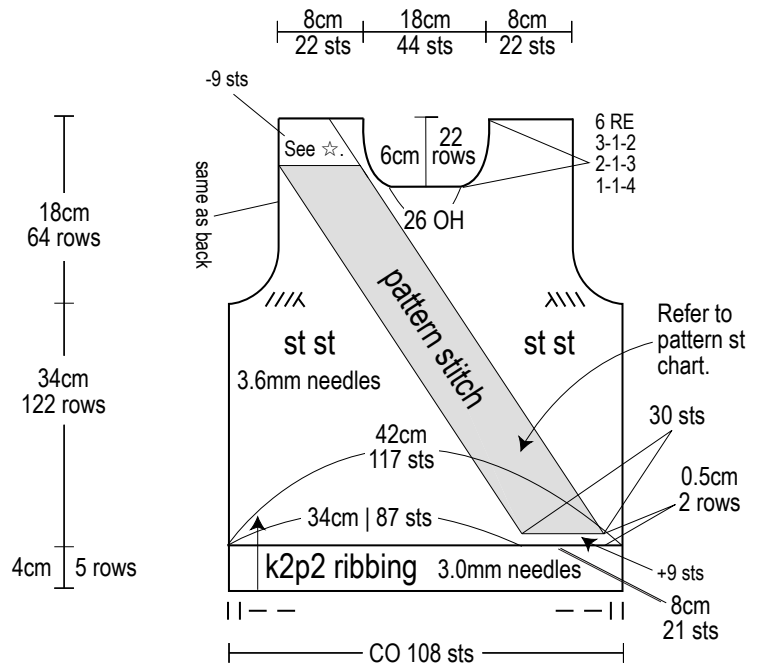
BO = bind off
CO = cast on
k = knit stitch
OH = on hold (that is, place sts on stitch holder)
p = purl stitch
PU = pick up
RE = row(s) even
= rows-stitches-times

Back



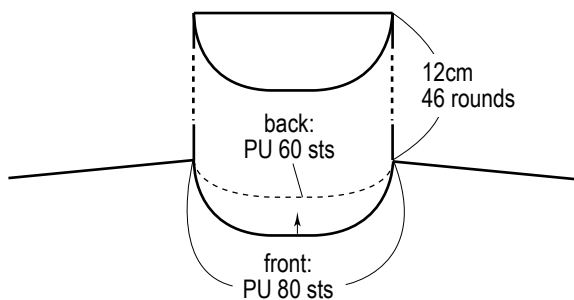
Front

☆ Work evenly spaced decreases while maintaining pattern stitch.



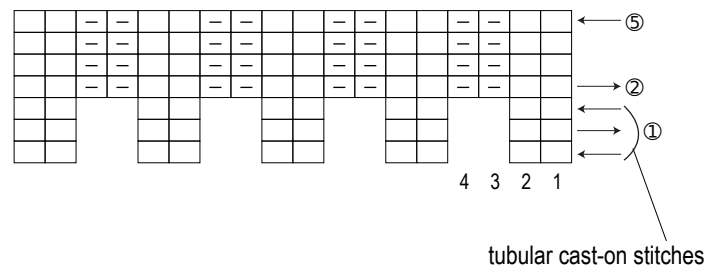
Collar: k2p2 ribbing

3.0mm needles



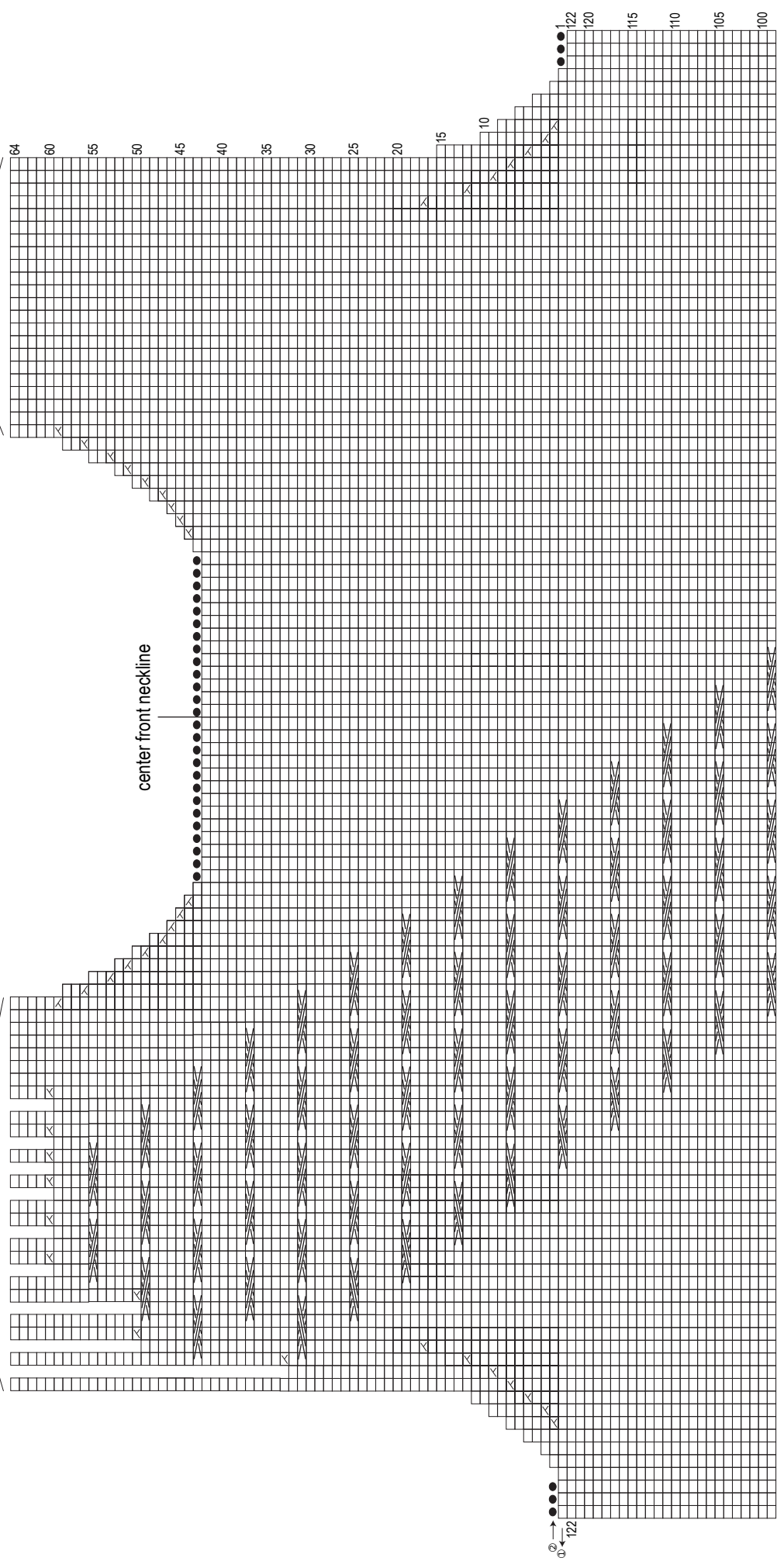
Hem: k2p2 ribbing

□ = □ knit



22 sts

22 sts



center front neckline

magnification of cable stitch

work even

