

214a-01 Collared Vest



Suggested yarn:

- Pierrot Yarns Basic Bulky [100% merino wool; 49yds/45m per 1.41oz/40g skein];
 - medium: color #5 brown, 12 skeins [460g]
 - large: color #5 brown, 13 skeins [510g]

Tools/Notions:

- 5.4mm (approx. US 9) and 6.0mm (US 10) knitting needles or sizes necessary to achieve gauge
- 5.4mm (approx. US 9) double-pointed knitting needles or size necessary to achieve gauge
- 7.0mm (*no US equivalent*) crochet hook or size necessary to achieve gauge
- 5 buttons (25mm/0.98")

Finished measurements:

- medium size:
 - bust 94cm/37.01"
 - cross back width 36cm/14.17"
 - back length 52cm/20.47"
- large size:
 - bust 100cm/39.37"
 - cross back width 39cm/15.35"
 - back length 62cm/24.41"

Gauge (10cm/4" square):

- pattern stitch: 15 sts and 19 rows
- seed stitch: 12 sts and 19 rows
- k1p1 ribbing (with largest needles): 15.5 sts and 15 rows

Gauge may vary according to individual knitting style. Change needle size if necessary to achieve gauge. Alternatively, rework pattern with your own gauge measurements.

Summary

Back: Cast on with long-tail cast-on method. Work in k1p1 ribbing. Continue in pattern stitch, with seed stitch panel at each side. On final row, bind off neckline stitches.

Right front: Begin as for back, then work in pattern stitch and seed stitch. Reverse shaping for left front.

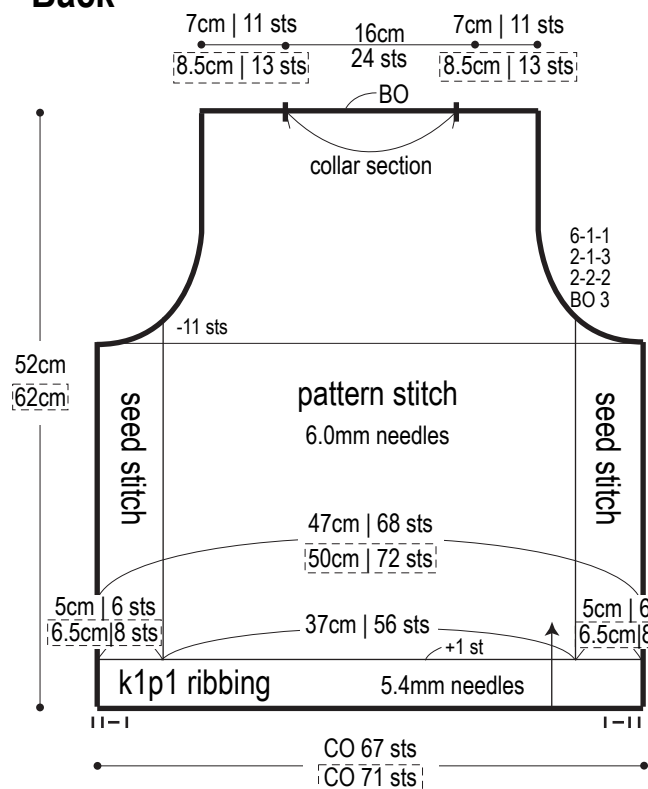
Collar: Cast on with long-tail cast-on method. Work in k1p1 ribbing. At each side, increase with backwards loop cast-on increase. Shape sides with short rows as indicated. Bind off when finished. Fold collar to outside where indicated; seam to body with crochet slip stitch seam according to schematic.

Finishing: Seam shoulders with crochet slip stitch seam. Seam sides with mattress stitch. Pick up stitches from front edges; work button band in k1p1 ribbing, with buttonholes in right front button band only. Bind off in pattern. Pick up stitches around armhole; work k1p1 ribbing in the round. Bind off in pattern. Seam collar to body with whipstitch, aligning markers on collar with markers on body. Seam ▲ section of collar to ▲ section of buttonband, working whipstitch first along front side and then continuing to back side.

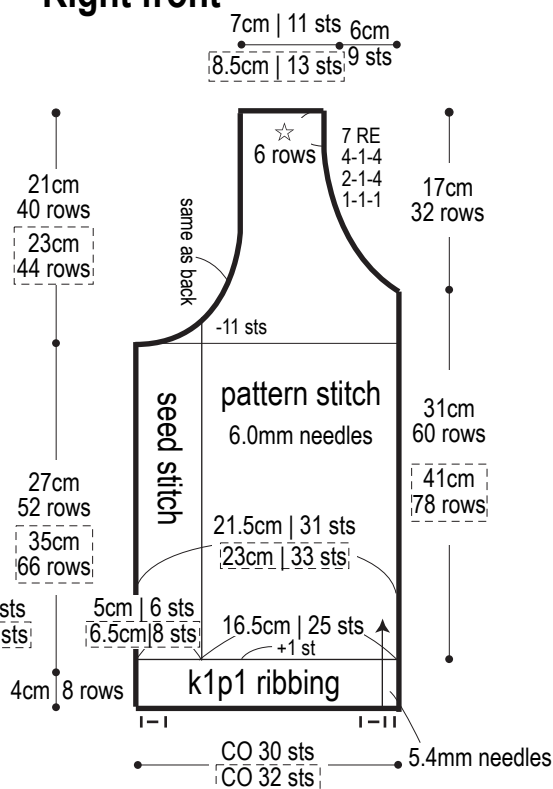
Abbreviations:

BO = bind off CO = cast on PU = pick up RE = row(s) even YO = yarn over ### = rows-stitches-times

Back

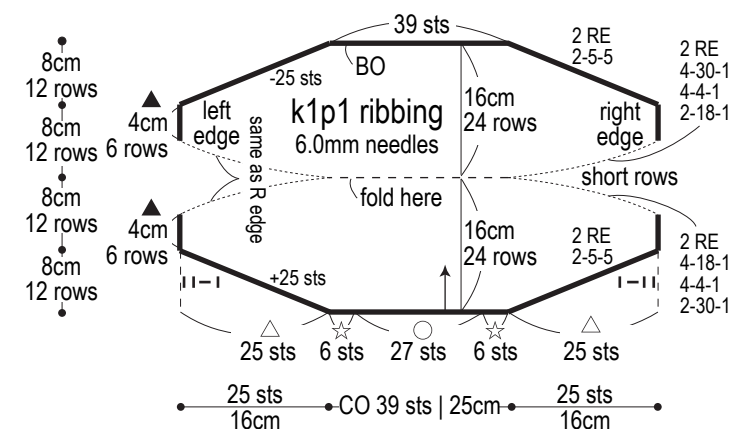


Right front



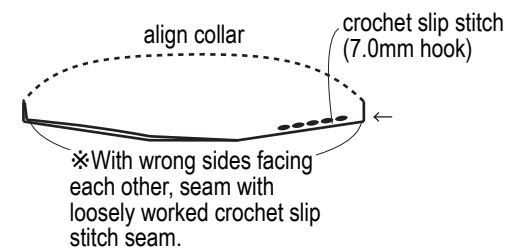
*Reverse shaping of right front for left front.

Collar

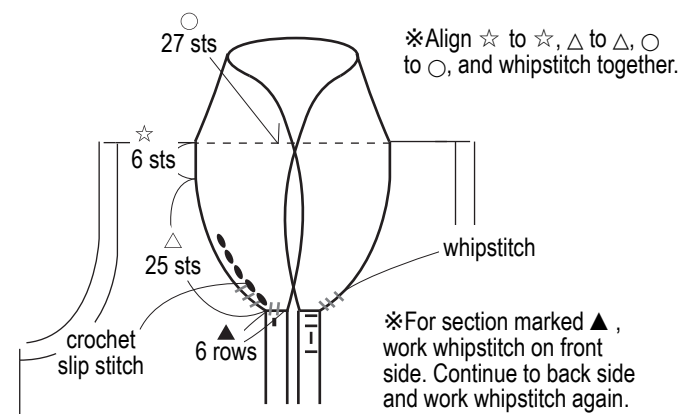


[] = large size

Unless indicated, instructions refer to both sizes.



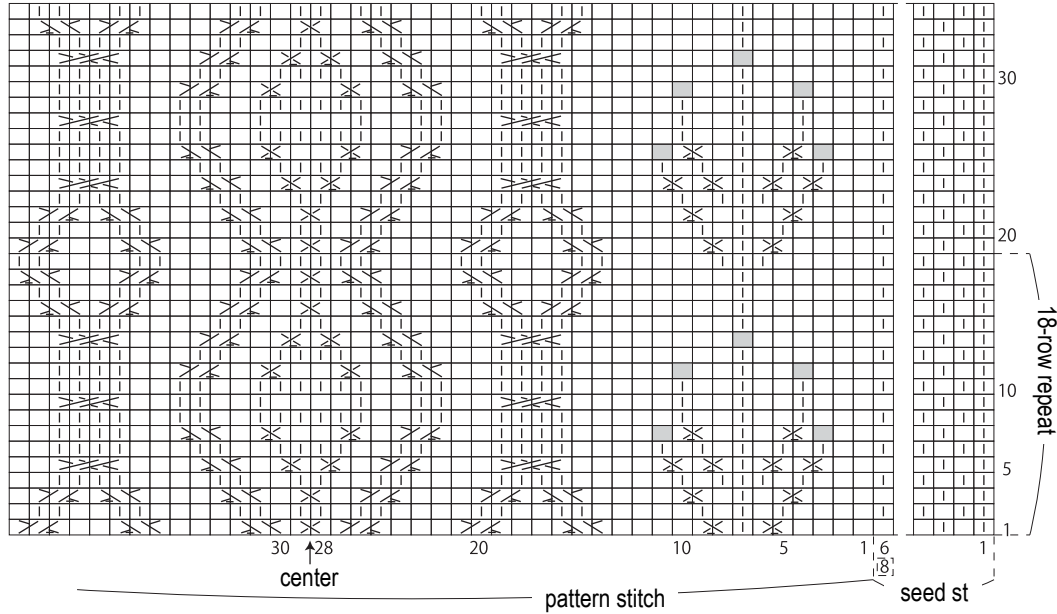
Collar finishing



Back: pattern stitch

6.0mm needles

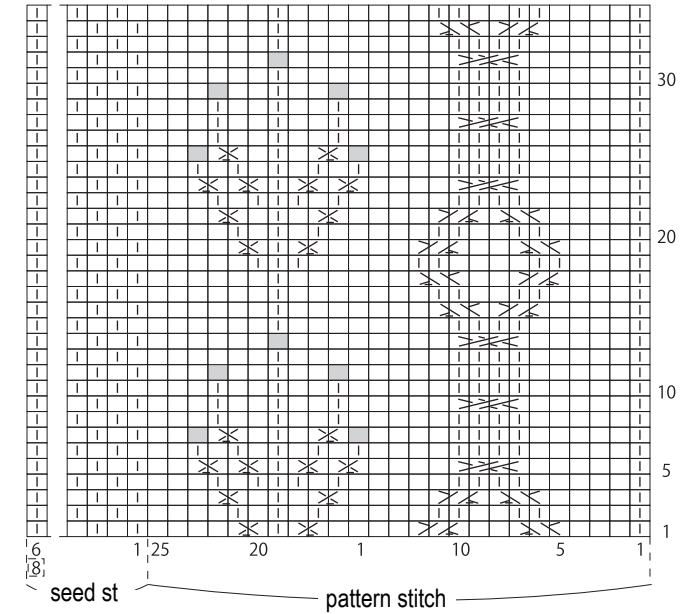
□ = □ purl



Right front: pattern stitch

6.0mm needles

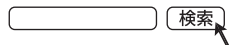
□ = □ purl



Use this QR code on your smartphone to view a video about how to work the collar.



※To view on computer, search on the Pierrot Yarns website or YouTube channel instead.



⊗ = Insert R needle purlwise into second st on L needle from behind first st. P1, K1.

⊗ = Insert R needle knitwise into second st on L needle from in front of first st. K1, P1.

⊗ = C3Fp: slip 2 sts onto cable needle and hold in front of work; p1, k2 from cable needle.

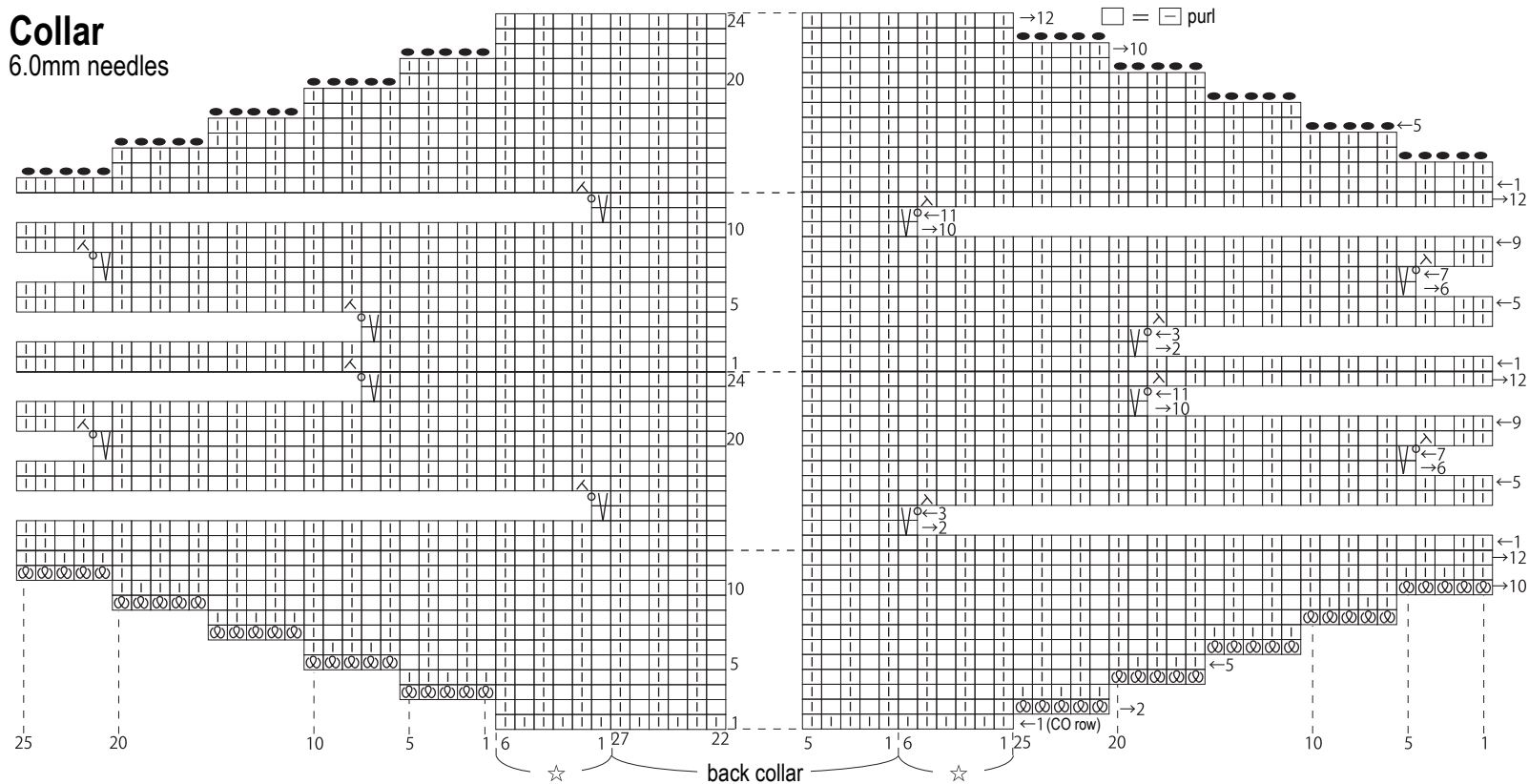
⊗ = C3Bp: slip 1 st onto cable needle and hold behind work; k2, p1 from cable needle.

⊗ = backwards loop cast-on increase

⊗ = slip stitch with YO

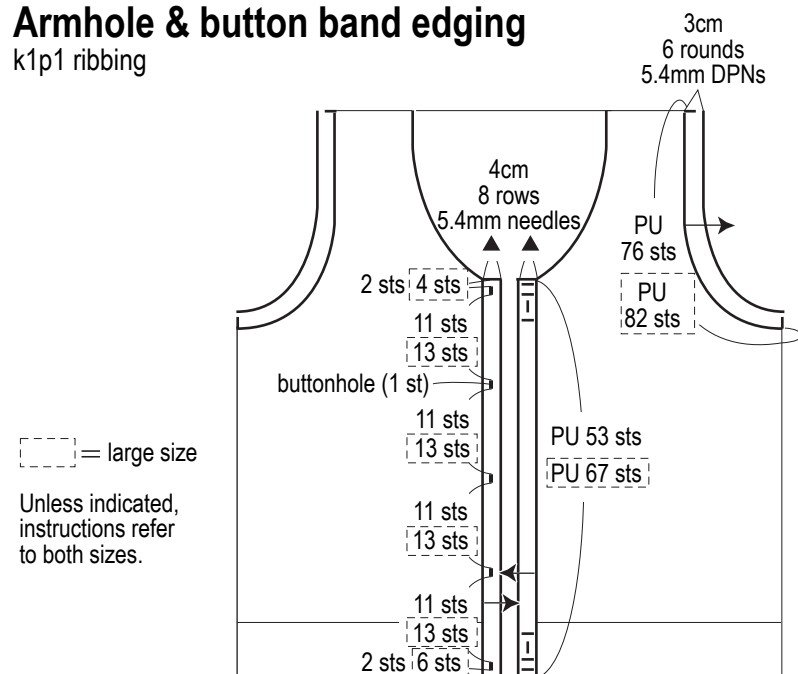
⊗ = = 5-st bobble

6.0mm needles



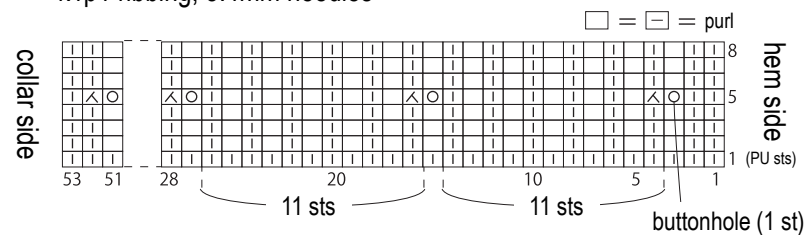
Armhole & button band edging

k1p1 ribbing



Medium size: buttonholes

k1p1 ribbing, 5.4mm needles



Large size: buttonholes

k1p1 ribbing, 5.4mm needles

