

23-44 Tawashi



Suggested yarn:

- Pierrot Yarns Meine Rollen Acrylic Gokubuto [100% acrylic; 61 yds/56m per 1.59 oz./45g skein]; -- *discontinued; suggested substitute below*
 - version A:
 - color #1 white, 1 skein [15g]
 - color #10 light blue, 1 skein [15g]
 - version B:
 - color #4 pink, 1 skein [15g]
 - color #11 red, 1 skein [15g]
- *suggested substitute*: Pierrot Yarns Zakka Acrylic Namibuto [100% acrylic; 77 yds/70m per 0.88 oz./25g skein];
 - color A, 1 skein [15g]
 - color B, 1 skein [15g]

Tools/Notions:

- 5.0mm (US H) crochet hook or size necessary to achieve gauge

Finished measurements:

- diameter 13cm/5/12"

Gauge (10cm/4" square):

- No gauge information is provided in the original pattern. Use a hook size necessary to achieve desired stiffness of fabric.

Gauge may vary according to individual crochet style. Change hook size if necessary to achieve gauge. Alternatively, rework pattern with your own gauge measurements.

Summary

✳️**Note:** Like all Japanese patterns, stitch counts given here for foundation chains do **not** include any chain sts needed for turning post.

Work according to chart, increasing and decreasing on same rows. Alternate as follows: row A decrease > increase, then row B increase > decrease.

With wrong sides facing each other, seam foundation chain to bind-off edge using whipstitch. At each edge, thread yarn through each stitch at edge, then cinch shut tightly and bind off.

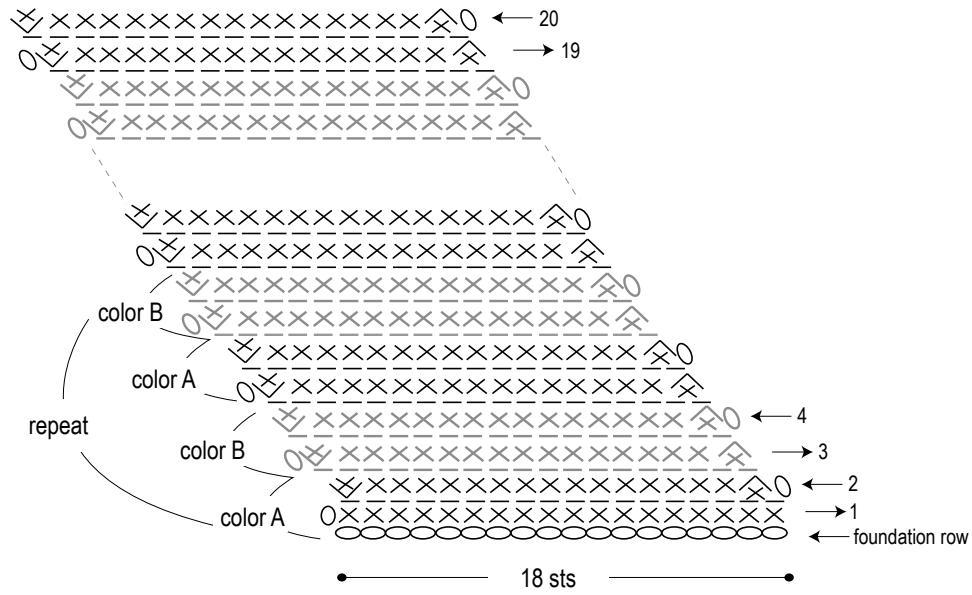
Abbreviations:

ch = chain

sc = single crochet (US)

sc tbl = single crochet through back loop only (US)

Chart



- = chain stitch
- × = sc (US)
- ⊗ = sc tbl (US)

Finishing

