

# 817pch Citrus Clutch



## Suggested yarn:

- Studio Tricot Citrus [60% bamboo, 40% hemp; 137yds/125m per 1.76oz/50g skein]; color #04 turquoise, 2 skeins [80g]

## Tools/Notions:

- 2.5mm (approx. US B or C) crochet hook or size necessary to achieve gauge
- 1 zipper (20cm/7.87")

## Finished measurements:

- mouth circumference 20cm/7.87"
- depth 11cm/4.33"

## Gauge (10cm/4" square):

- pattern stitch: 24 sts and 14 rows

*Gauge may vary according to individual crochet style. Change hook size if necessary to achieve gauge. Alternatively, rework pattern with your own gauge measurements.*

## Summary

❖**Note:** Like most Japanese patterns, the stitch counts given here for foundation chains do not include any chain sts needed for turning posts. The stitch count indicates the final number of stitches you should have for that row/round.

**Body:** Work foundation chain to begin. Work in pattern stitch according to chart. Start second half of pouch by working into other side of foundation chain; continue in pattern stitch.

**End pieces:** Work foundation chain to begin. Work in hdc for 15 rows, increasing and decreasing as shown in chart. Make second end piece identical to the first.

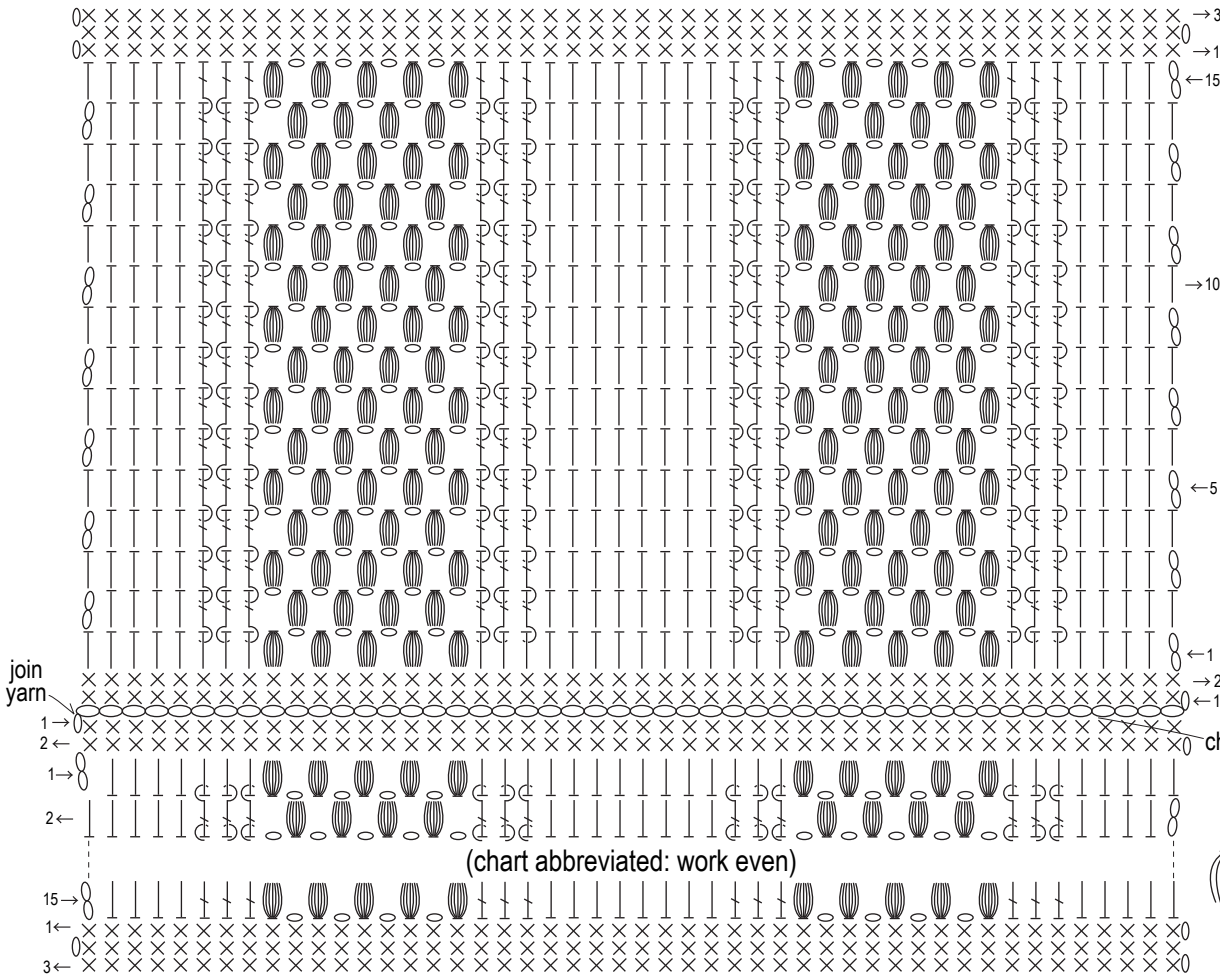
**Finishing:** With wrong sides facing each other, seam body and end pieces together as shown in finishing schematic using sc. Sew zipper to mouth of bag.

## Abbreviations:

- bp = back post
- ch = chain
- dc = double crochet (US)
- fp = front post
- hdc = half double crochet (US)
- sc = single crochet (US)

# Body of pouch

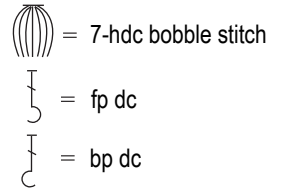
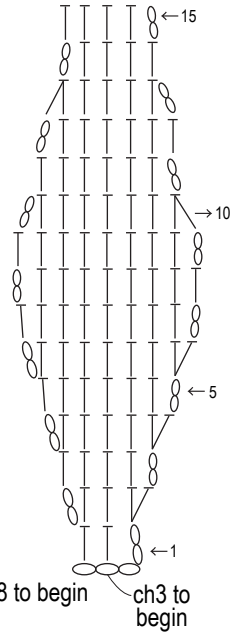
2.5mm hook



※Work bobbles and chain sts between bobbles tightly.

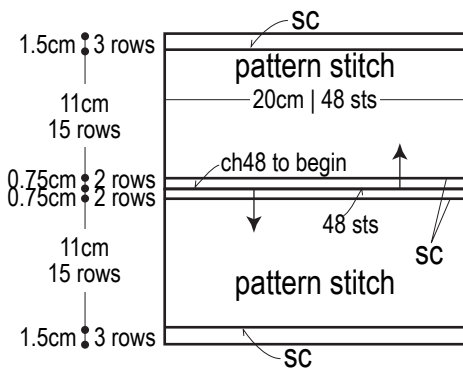
## End piece

2.5mm hook  
(make 2)



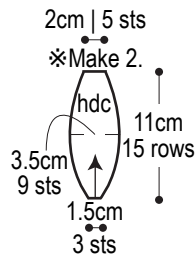
## Body schematic

2.5mm hook

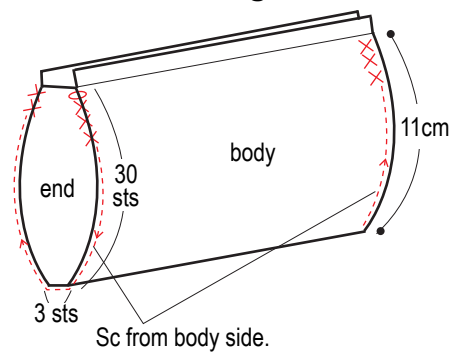


## End schematic

2.5mm hook



## Finishing



## Zipper finishing

※Use blind stitch so that sts are barely visible.

