

24-6 Diagonal Cable Sweater



Suggested yarn:

- Pierrot Yarns Kirakira Tape [95% rayon, 5% polyester; 131 yds/120m per 1.41 oz./40g skein]; color #365, 7 skeins [270g] - *discontinued; please choose appropriate substitute*

Tools/Notions:

- 3.6mm (approx. US 5) and 3.9mm (approx. US 6) straight knitting needles or sizes necessary to achieve gauge
- 3.3mm (approx. US 3) and 3.6mm (approx. US 5) circular knitting needles or sizes necessary to achieve gauge

Finished measurements:

- bust 94cm/37.01"
- cross back width 36cm/14.17"
- back length 55.5cm/21.85"
- sleeve length 18cm/7.09"

Gauge (10cm/4" square):

- stockinette stitch: 27 sts and 31 rows
- pattern stitch: 30 sts and 31 rows

Gauge may vary according to individual knitting style. Change needle size if necessary to achieve gauge. Alternatively, rework pattern with your own gauge measurements.

Knitting Tips

Back body & sleeves: Cast on with crochet provisional cast-on method. Work in stockinette stitch. Shape sides as follows: use k2tog and ssk decreases and backwards loop cast-on for increases. Pick up live stitches from provisional cast-on at hem and cuff edges; work edging in k2p2 ribbing. Bind off with 2x2 tubular bind-off method.

Front body: Work loosely in pattern stitch and stockinette stitch according to schematic, starting from right hem and working towards left shoulder. Work increases with lifted increase, and work decreases by binding off stitches. Work the hem as for the back hem.

Finishing: Seam shoulders and sides together with right sides facing each other using crochet slip stitch seam. Pick up stitches around neckline; work collar in k2p2 ribbing. Seam sleeves to body with crochet slip stitch seam.

Abbreviations:

BO = bind off

k = knit

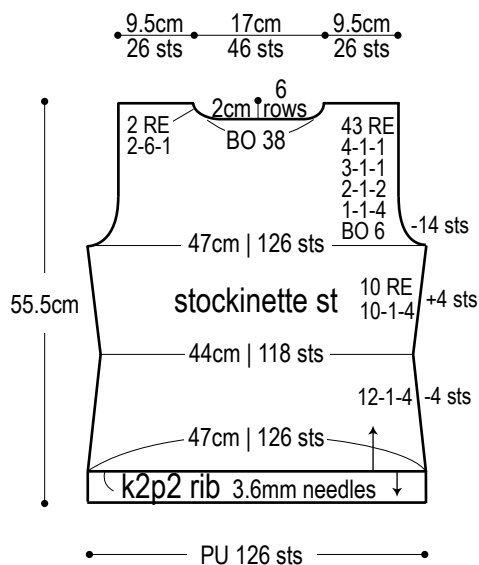
p = purl

PU = pick up

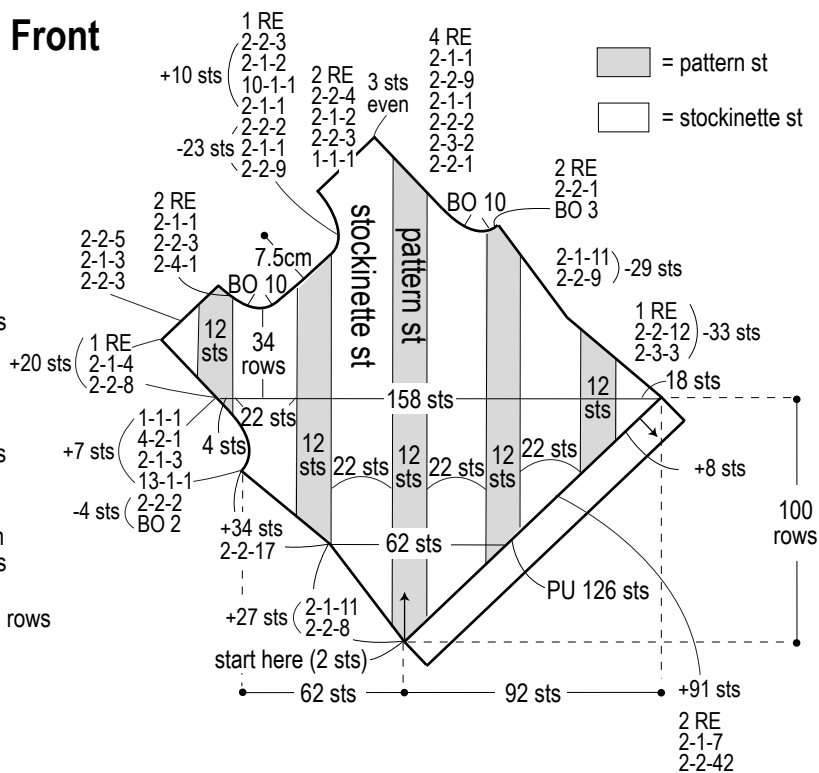
RE = row(s) even

= rows-stitches-times

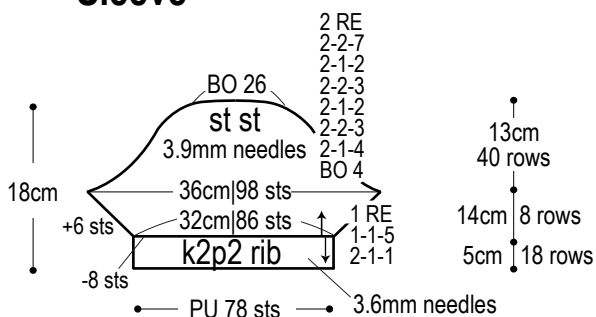
Back



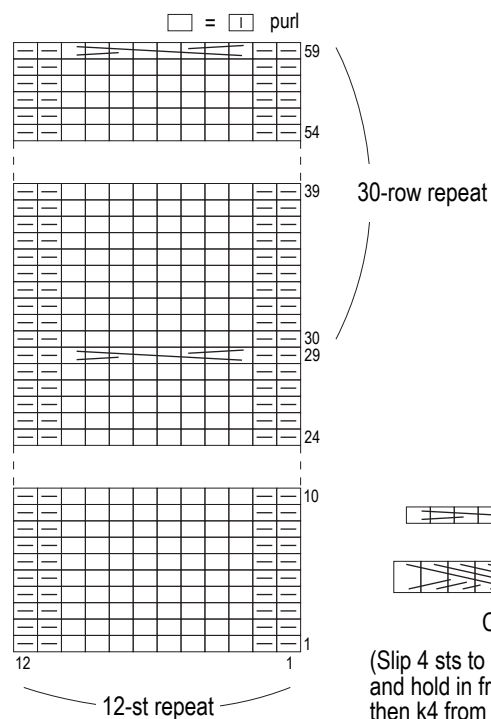
Front



Sleeve



Pattern stitch



Collar: k2p2 ribbing

3.3mm & 3.6mm DPNs

