

214ss-14 Silk Rosa Cardigan



Suggested yarn:

- Pierrot Yarns Silk Rosa [75% super kid mohair, 25% silk; 213 yds/195m per 0.88 oz./25g skein]; color #14 luxury yellow, 4 skeins [100g]
- Pierrot Yarns Pure Wool Lace [50% merino wool, 50% other wool; 820 yds/750m per 3.53 oz./100g cone]; color #426 cream yellow, 2 cones [110g]

Tools/Notions:

- 3.6mm (approx. US 5) and 4.2mm (approx. US 6) knitting needles or sizes necessary to achieve gauge

Finished measurements:

- bust 94cm/37.01"
- back length 62cm/24.41"
- sleeve length 44cm/17.32"

Gauge (10cm/4" square):

- pattern stitch: 19 sts and 24.5 rows
- k1p1 ribbing: 20 sts and 24.5 rows

Gauge may vary according to individual knitting style. Change needle size if necessary to achieve gauge. Alternatively, rework pattern with your own gauge measurements.

Knitting Tips

✳️**Note:** entire garment worked with 2 strands of yarn held together (1 strand of Silk Rosa and 1 strand of Pure Wool Lace).

Body & sleeve: Cast on with long-tail cast-on method. Work in k1p1 ribbing. Continue in pattern stitch, after first working decreases in first row of pattern stitch. Work 5 sts for front placket at the same time as body. Shape neckline by binding off stitches where indicated and by working decreases at edges. Shape sides of sleeves with fully fashioned lifted increases (worked 1 st in from the edge).

Finishing: Seam shoulders with crochet slip stitch seam. Pick up stitches around neckline; work collar as indicated. Bind off in pattern. Seam sleeves to body with stitches-to-rows mattress stitch. Seam sides and sleeve undersides with mattress stitch.

Abbreviations:

BO = bind off CO = cast on k = knit p = purl PU = pick up RE = row(s) even #-#-# = rows-stitches-times

Back

Diagram illustrating the back of the garment with dimensions and construction details:

- Top Edge:**
 - Left side: 9cm (17 sts)
 - Center: 28cm | 53 sts
 - Right side: 9cm (17 sts)
 - Neck opening: pm for neck
 - Neckband: BO 53
- Left Side:**
 - Length: 62cm
- Right Side:**
 - Length: 21cm (52 rows)
 - Length: 32cm (78 rows)
 - Length: 9cm (22 rows)
 - Sleeve opening: pm for sleeve
- Bottom Edge:**
 - Length: 46cm | 87 sts
 - Left side: -6 sts
 - Right side: 3.6mm needles
 - Bottom center: CO 93 sts
- Construction Details:**
 - Pattern stitch
 - 4.2mm needles
 - k1p1 ribbing (shaded area)

Right front

8 RE
4-1-1
2-2-1
2-3-2
2-4-1
2-8-1
2-12-1
BO 12

9cm
17 sts

21cm | 40 sts

1.5cm
5 sts

21cm
52 rows

32cm
78 rows

9cm
22 rows

pm for sleeve

pattern stitch

4.2mm needles

☆ = 6cm | 11 sts

30cm | 57 sts

24cm | 46 sts

-1 st

k1p1 ribbing

3.6mm needles

10cm
24 rows

43cm
106 rows

k1p1 rib

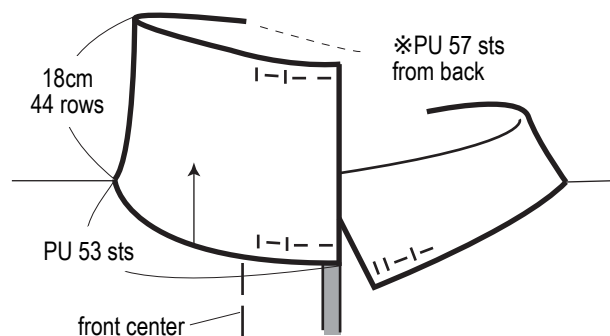
1.5cm
5 sts

CO 63 sts

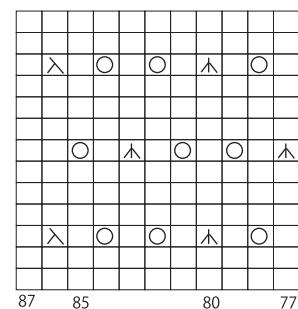
*Reverse shaping of right front for left front.

Diagram of a trapezoidal pattern piece for a garment. The top width is 42cm | 79 sts. The bottom width is 24.5cm | 47 sts. The left side length is 44cm. The right side length is 35cm. The pattern is made with 4.2mm needles. The top section is labeled "pattern stitch" and "BO". The bottom section is labeled "k1p1 ribbing" and "3.6mm needles". The bottom section is 9cm high and 22 rows deep. The bottom edge is marked with "CO 48 sts".

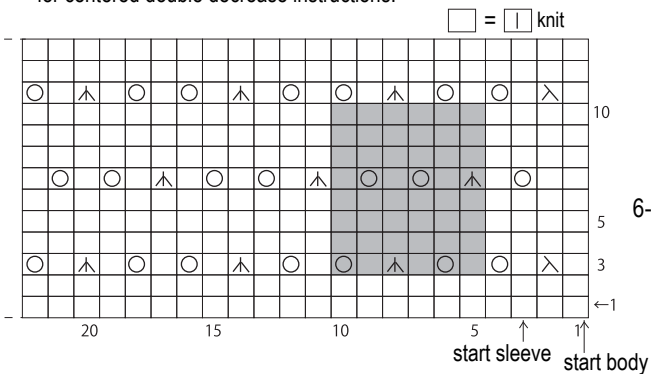
k1p1 ribbing, 3.6mm needles



4.2mm needles



✱Visit Pierrot Yarns' tutorials on YouTube for centered double decrease instructions.



6-st, 8-row
repeat