

214ss-03 Striped Pullover



Suggested yarn:

- Pierrot Yarns Cotton Neat S [100% cotton; 104 yds/95m per 1.41 oz./40g skein];
 - color #02 ivory, 4 skeins [145g]
 - color #05 lavender, 5 skeins [170g]

Tools/Notions:

- 3.3mm (approx. US 3) and 3.9mm (approx. US 6) straight knitting needles or sizes necessary to achieve gauge
- 3.3mm (approx. US 3) double-pointed knitting needles or size necessary to achieve gauge

Finished measurements:

- bust 92cm/36.22"
- center back neck-to-cuff 30.5cm/12.01"
- back length 51cm/20.08"

Gauge (10cm/4" square):

- pattern stitch (stripes): 23 sts and 30 rows

Gauge may vary according to individual knitting style. Change needle size if necessary to achieve gauge. Alternatively, rework pattern with your own gauge measurements.

Knitting Tips

❖**Note:** for striped pattern stitch and striped k1p1 ribbing, refer to charts for color sequences.

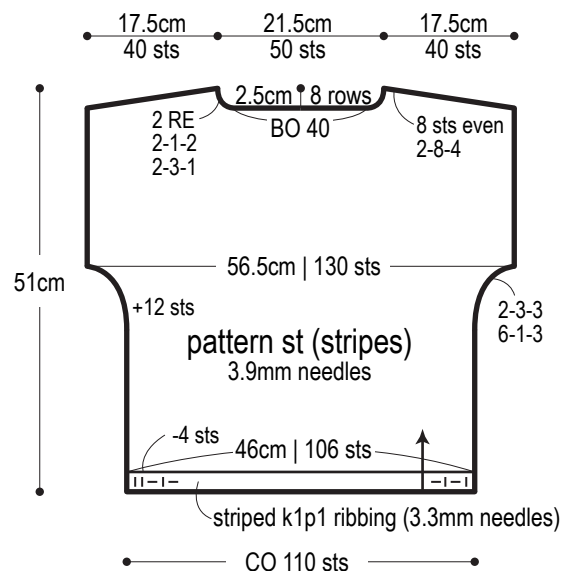
Back & front body: Cast on with long-tail cast-on method. Work in k1p1 ribbing. Change needle size, then begin working in pattern stitch (stripes). For the increase of 12 stitches in the underarm area, use backwards loop cast-on increase.

Finishing: Seam shoulders with three-needle bind-off method. Seam sides with mattress stitch, but seam underarm sections (where increases were worked with backwards loop cast-on increase) with whipstitch. Pick up stitches around neckline and armholes, respectively, and work striped k1p1 ribbing in the round. Bind off in pattern.

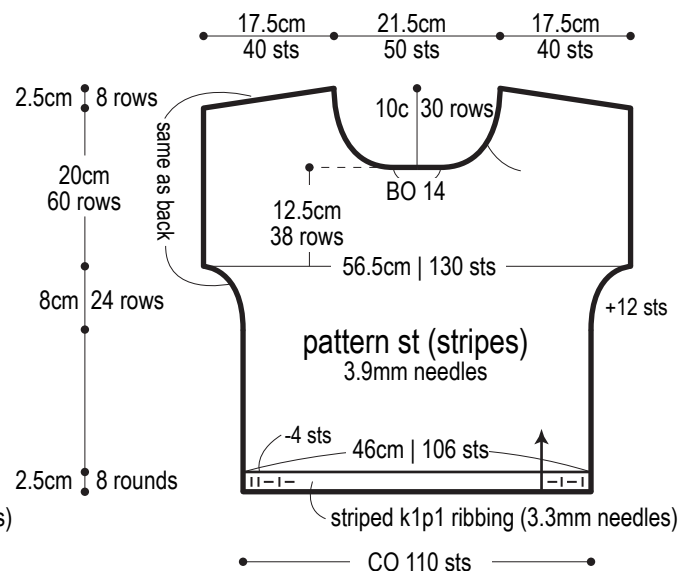
Abbreviations:

BO = bind off CO = cast on PU = pick up RE = row(s) even ### = rows-stitches-times

Back

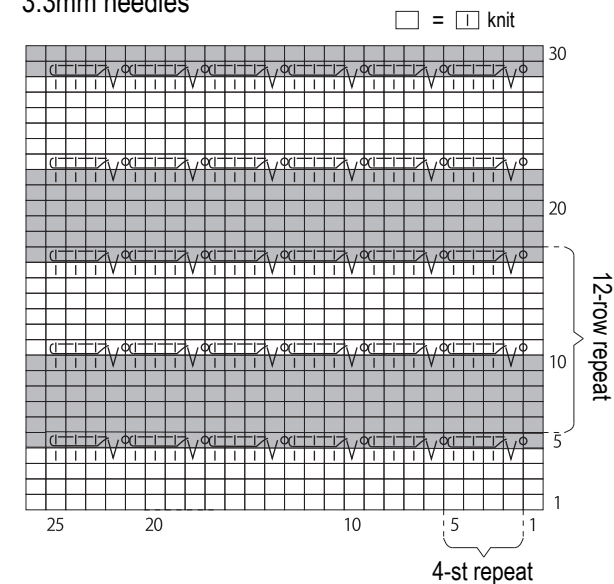


Front



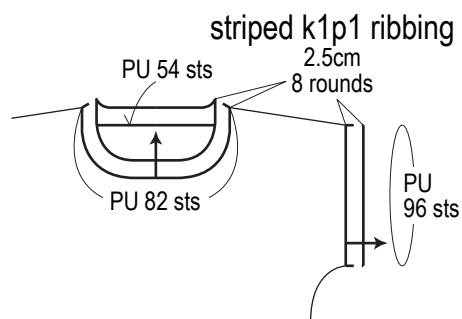
Pattern stitch & color sequence

3.3mm needles

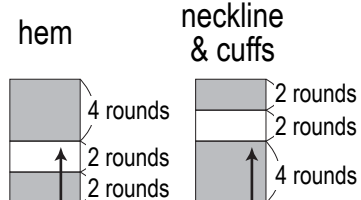


Finishing

3.3mm DPNs



Striped k1p1 ribbing



□ = color #02 ivory
■ = color #05 lavender

□ = right slip knot stitches (over 4 stitches)

Use this QR code on your smartphone to view a video about how to work the right slip knot stitches (over 4 stitches).



※To view on computer, search on the Pierrot Yarns website instead.

