

98-99-19 Tweed Sweater



Suggested yarn:

- Pierrot Yarns Nep Tweed [60% wool, 30% acrylic, 10% polyester; 394 yds/360m per 7.05 oz./200g skein]; color #1001, 3 skeins [490g]
- Pierrot Yarns Super Kid Mohair [75% kid mohair, 25% nylon; 306 yds/280m per 0.88 oz./25g skein]; color #5801, 5 skeins [125g]

Tools/Notions:

- 4.5mm (US 7) and 5.1mm (approx. US 8) straight knitting needles or sizes necessary to achieve gauge
- 3.9mm (approx. US 6) and 4.5mm (US 7) circular or double-pointed knitting needles or sizes necessary to achieve gauge

Finished measurements:

- bust 102cm/40.16"
- cross back width 43cm/16.93"
- back length 62cm/24.41"
- sleeve length 51cm/20.08"

Gauge (10cm/4" square):

- stockinette stitch: 17 sts and 22 rows
- pattern stitch: 21 sts and 22 rows

Gauge may vary according to individual knitting style. Change needle size if necessary to achieve gauge. Alternatively, rework pattern with your own gauge measurements.

Knitting Tips

✳️**Note:** entire garment worked with 2 strands of yarn held together (1 strand of each yarn type).

Body & sleeves: Cast on with crochet provisional cast-on method. Work according to schematic, with pattern stitch only in central panel. Place 5 stitches at side (underarm area) and sleeve cap stitches on waste yarn (or stitch holder). Remove provisional cast-on edge from hem and cuffs; work edging in twisted k1p1 ribbing.

Collar: Seam shoulders with three-needle bind-off. Pick up required number of stitches; work collar in twisted k1p1 ribbing.

Finishing: Join sleeve cap stitches to armhole with crochet slip stitch seam, then work 1 row of stockinette stitch. Bind off with sewn bind-off method. Seam sides and sleeve undersides with mattress stitch.

Abbreviations:

OH = on hold (place on stitch holder)

k = knit

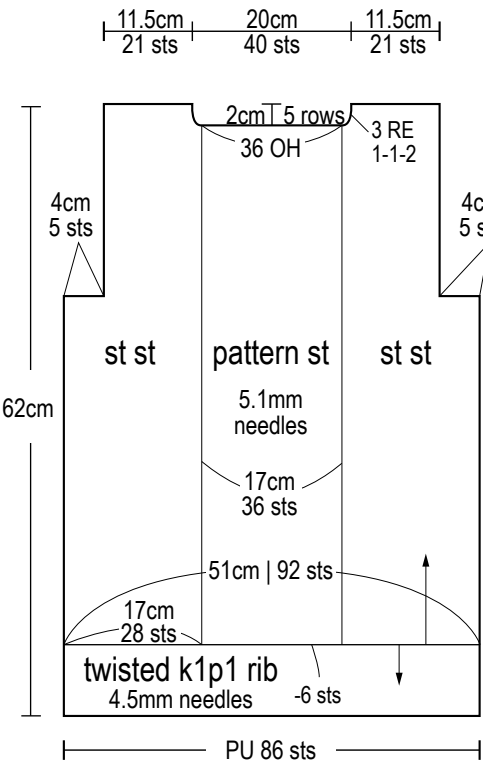
p = purl

PU = pick up

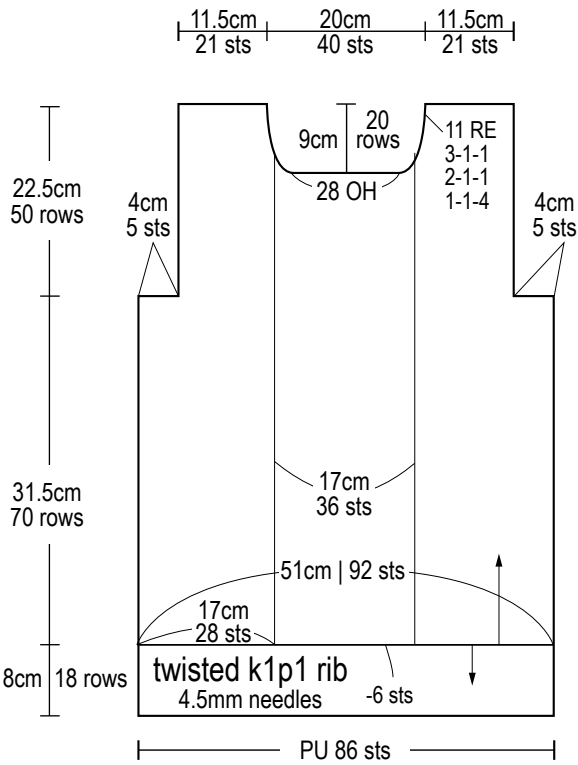
RE = row(s) even

= rows-stitches-times

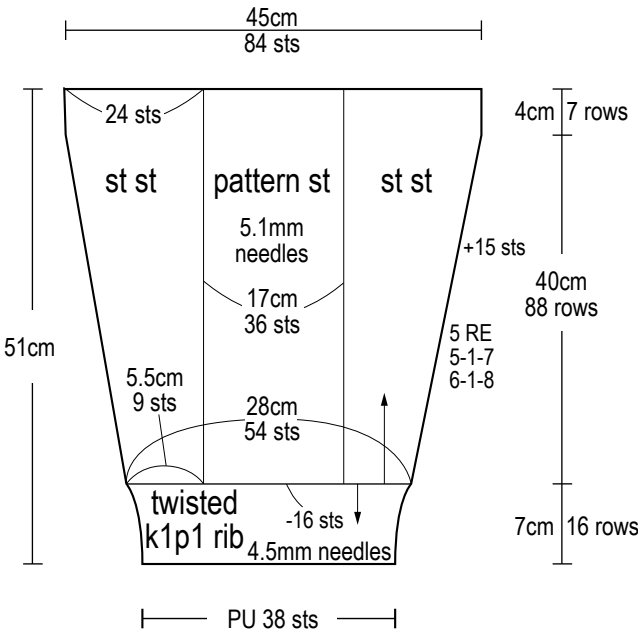
Back



Front

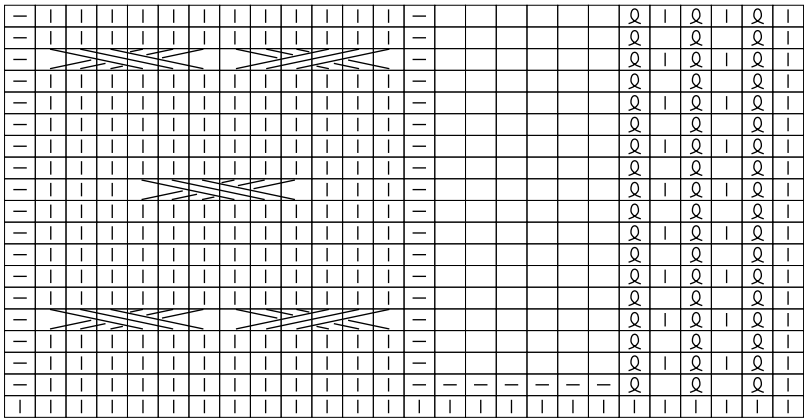


Sleeve



Pattern stitch

□ = purl



center of body; sleeve

p7

38 sts

Collar

twisted k1p1 ribbing

