

# 213fw-04 Lara Aran Cardigan



## Suggested yarn:

- Pierrot Yarns Lara [57% cotton, 43% alpaca; 104 yds/95m per 1.76 oz./50g skein]; color #01 oatmeal, 10 skeins [460g]

## Tools/Notions:

- 6.3mm (approx. US 10½) and 7.0mm (no US equivalent) knitting needles or sizes necessary to achieve gauge
- cable needle
- 6 buttons (21mm/0.83")

## Finished measurements:

- bust 104cm/40.94"
- cross back width 44cm/17.32"
- back length 66cm/25.98"
- sleeve length 54cm/21.26"

## Gauge (10cm/4" square):

- stockinette stitch: 14 sts and 17 rows
- pattern stitch A: 17.5 sts and 17 rows
- pattern stitch B and B': 15 sts and 22 rows

*Gauge may vary according to individual knitting style. Change needle size if necessary to achieve gauge. Alternatively, rework pattern with your own gauge measurements.*

## Knitting Tips

**Body:** Cast on for back using crochet provisional cast-on method. Work in stockinette stitch. Cast on for front as for back, but work in stockinette stitch and pattern stitch. Shape armhole and neckline by working fully fashioned decreases at the edges (worked 1 stitch in from the edge).

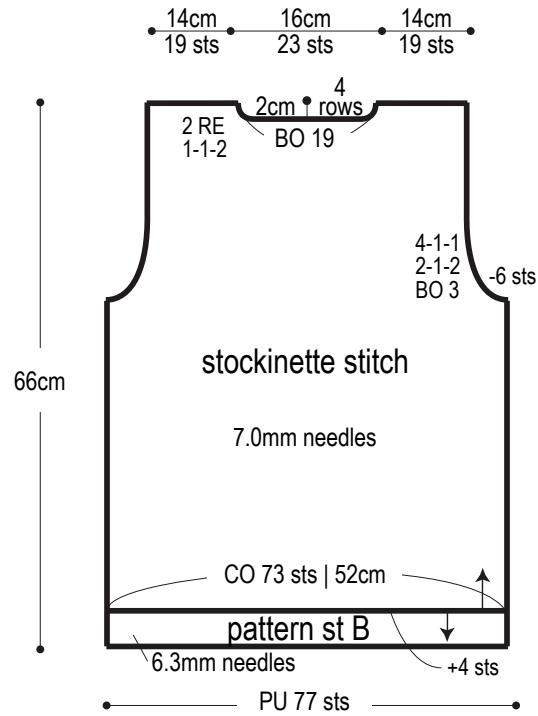
**Sleeves:** Cast on as for back, then work in pattern stitch A and stockinette stitch. Shape sleeve edges by working fully fashioned increases with lifted increase method (worked 1 stitch in from the edge). Bind off stitches for sleeve cap, then shape sleeve cap by working fully fashioned decreases at the edges (worked 1 stitch in from the edge).

**Finishing:** At hem and cuffs, remove provisional cast-on edge, picking up live stitches. Work pattern stitch B. Seam shoulders together with crochet slip stitch seam. Seam sides and sleeve undersides with mattress stitch. Pick up stitches along front center panel; work buttonband in pattern stitch B'. Be sure to work buttonholes in left front buttonband. Pick up stitches around neckline; work collar in pattern stitch C. Seam sleeves to body with crochet slip stitch seam. Fasten buttons to right front buttonband.

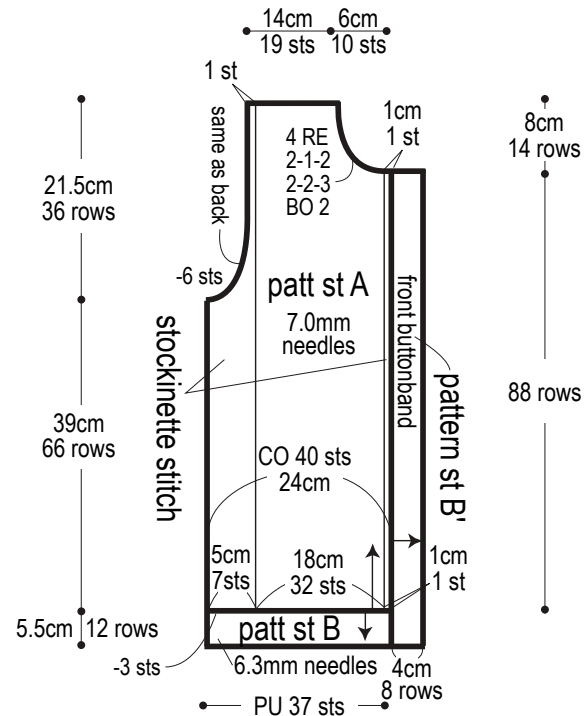
## Abbreviations:

BO = bind off    CO = cast on    PU = pick up    RE = row(s) even    #-#-# = rows-stitches-times

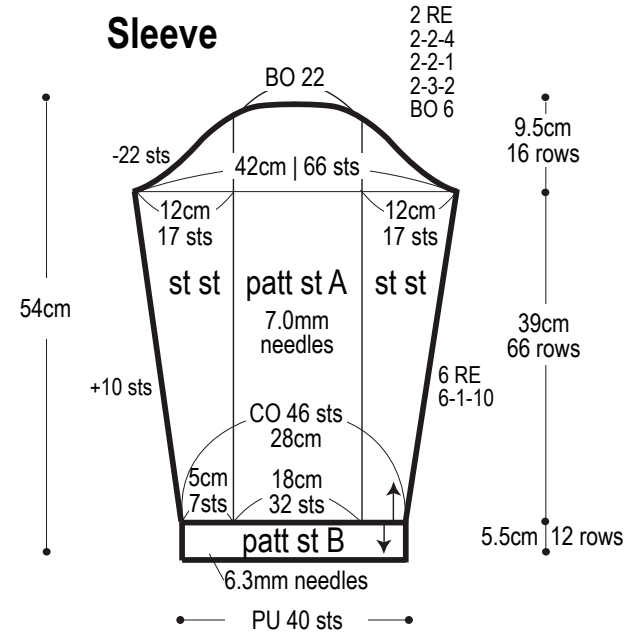
## Back



## Front

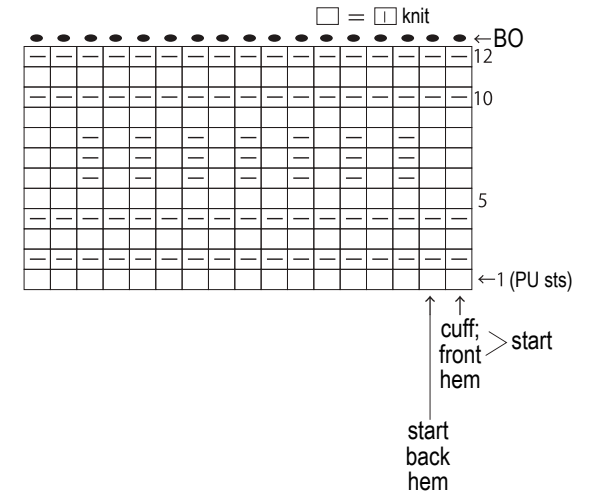


## Sleeve



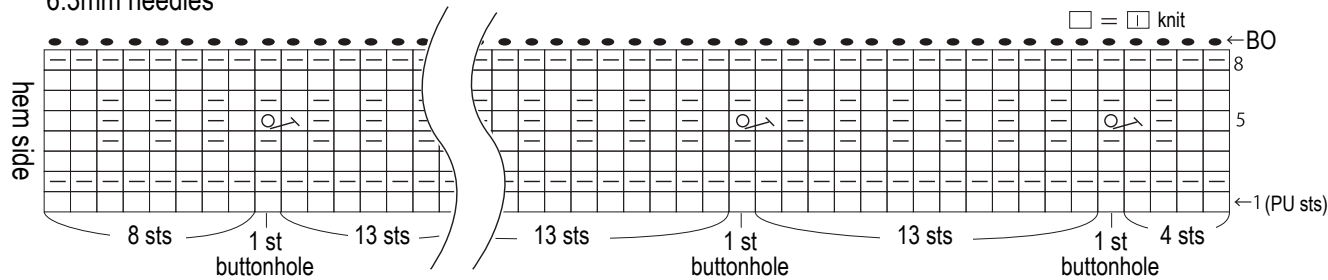
## Pattern stitch B: hem & cuffs

6.3mm needles



## Pattern stitch B': buttonband & buttonholes

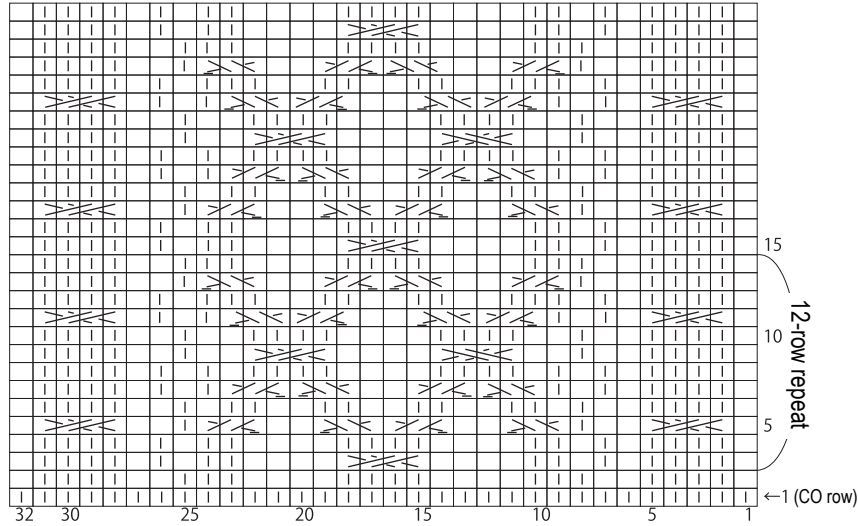
6.3mm needles



# Pattern stitch A

7.0mm needles

□ = ▢ purl



= C4B (slip 2 sts to cable needle and hold in back; k2; k2 from cable needle)

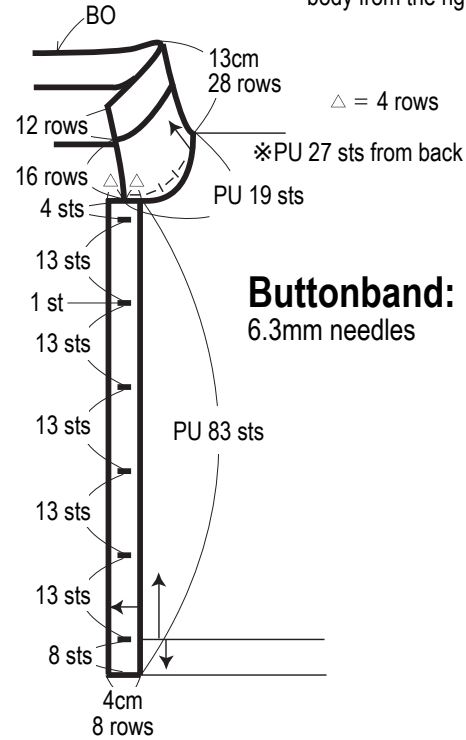
= C3Fp (slip 2 sts to cable needle and hold in front; p1; k2 from cable needle)

= C3Bp (slip 1 st to cable needle and hold in back; k2; p1 from cable needle)

# Collar: Pattern stitch C

6.3mm needles

※Pick up collar stitches from body from the right side.



# Buttonband: Pattern stitch B'

6.3mm needles

# Pattern stitch C: Collar

6.3mm needles

□ = ▢ knit

