

2728-OMO22-28 Cabled Cashmere Scarf



Suggested yarn:

- Pierrot Yarns Vintage Cashmere 100 [100% cashmere; 112 yds/102m per 1.41 oz./40g skein]; color #302 mottled brown, 4 skeins [160g]

Tools/Notions:

- 7.0mm knitting needles or size necessary to achieve gauge. Note: closest US size is US 10½.
- cable needle

Finished measurements:

- width 14-15cm/5.51-5.91"
- length 148-150cm/58.27-59.06"

Gauge (10cm/4" square):

- pattern stitch: 20-21 sts and 16.5-18 rows

Gauge may vary according to individual knitting style. Change needle size if necessary to achieve gauge. Alternatively, rework pattern with your own gauge measurements.

Knitting Tips

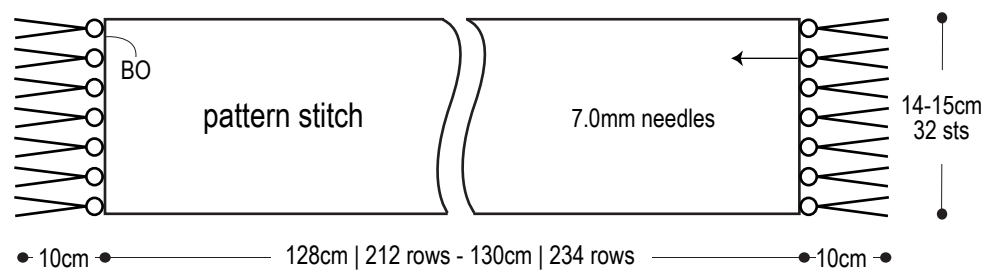
❖**Note:** Entire scarf worked with 2 strands of yarn held together.

Cast on with long-tail cast-on method. Work in pattern stitch according to chart. Bind off in pattern. Attach fringe to each end of scarf.

Abbreviations:

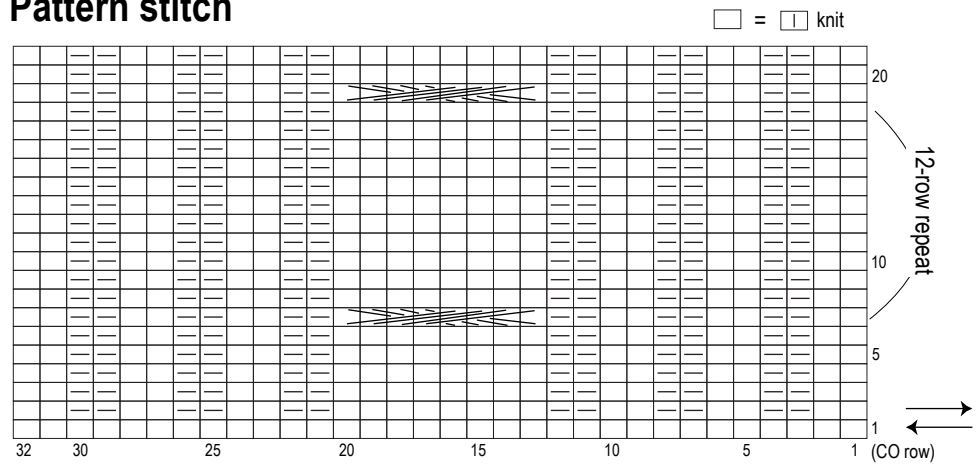
BO = bind off
CO = cast on
k = knit stitch
p = purl stitch


Scarf schematic



※Fringe instructions: Take 6 strands of yarn (each 24cm long) and fold them in half. Knot in 7 places at each end of scarf where shown.

Pattern stitch



 = C8B (slip 4 stitches to cable needle and hold in back of work; k next 4 sts on left needle; k4 from cable needle).