

# Wood Tweed Cowichan Jacket



## Suggested yarn:

- Keito-Zakka Stores Wood Tweed [100% wool; 30 yds/27m per 1.41 oz./40g skein];
  - color #8 biscuit, 18 skeins [520g]
  - color #9 bitter, 8 skeins [220g]

## Tools/Notions:

- 6.6mm (approx. US 10½) and 7.0mm (no US equivalent) knitting needles or sizes necessary to achieve gauge
- 4 buttons (21mm/0.83")

## Finished measurements:

- bust 94cm/37.01"
- center back neck-to-cuff 71cm/27.95"
- length 63cm/24.80"

## Gauge (10cm/4" square):

- stockinette stitch: 11 sts and 14 rows
- pattern stitch: 11 sts and 14 rows

*Gauge may vary according to individual knitting style. Change needle size if necessary to achieve gauge. Alternatively, rework pattern with your own gauge measurements.*

## Knitting Tips

**Sleeves:** Cast on with long-tail cast-on method. Working according to chart, knit 2 sleeves.

**Body:** Cast on with long-tail cast-on method. Work back, left front, and right front in one piece. Work hem in k1p1 ribbing. Work front buttonbands in garter stitch, being sure to work buttonholes in left front buttonband. Change needle size, then work increases and start working in stranded pattern stitch. Starting where raglan decreases begin, place stitches for back and left front on stitch holders, and continue working right front only. Work raglan decreases for right front according to chart. Then work back and left front sections.

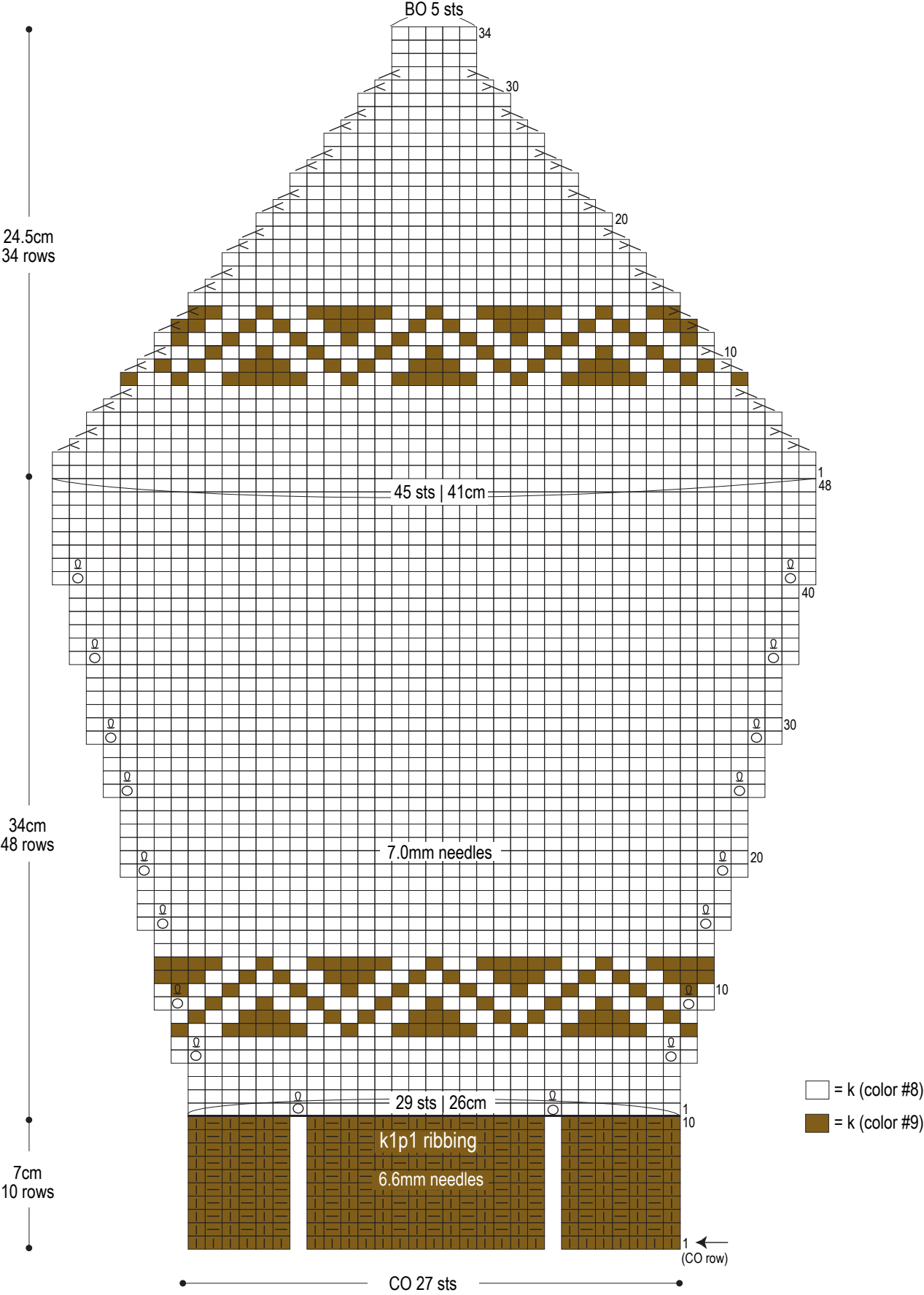
**Collar:** Seam back and sleeve raglan edges together as shown, working into sides of edge stitches. With right side of body facing you, pick up stitches around back and sleeves. Increasing at left and right edges, work 18 rows in garter stitch. Bind off in pattern.

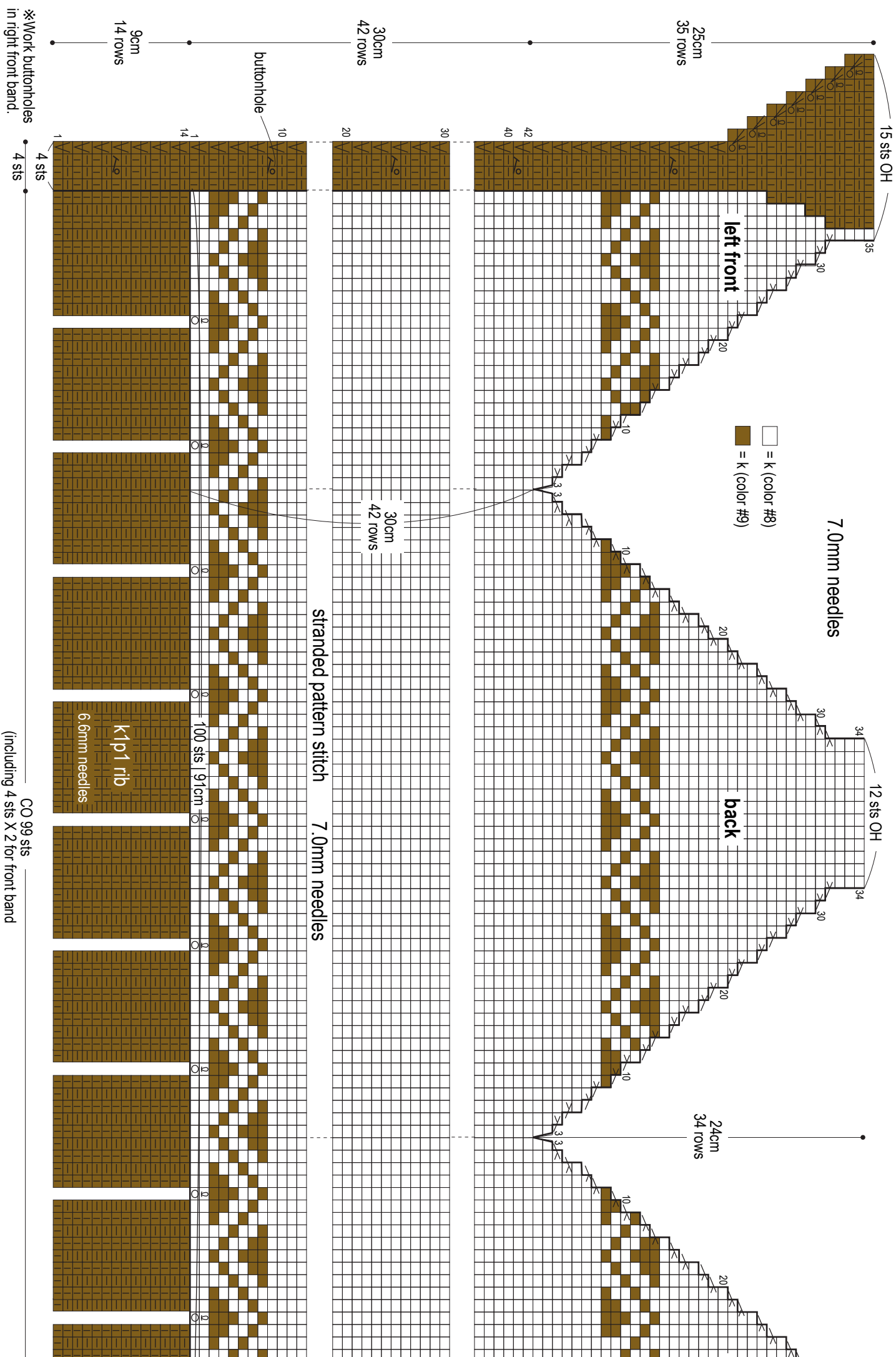
**Finishing:** Continue working 18 rows of collar and front body. With wrong side of body facing you, seam 15 stitches on hold using stitches-to-rows mattress stitch. Seam front body and sleeve raglan edges; seam underside of sleeves using mattress stitch.

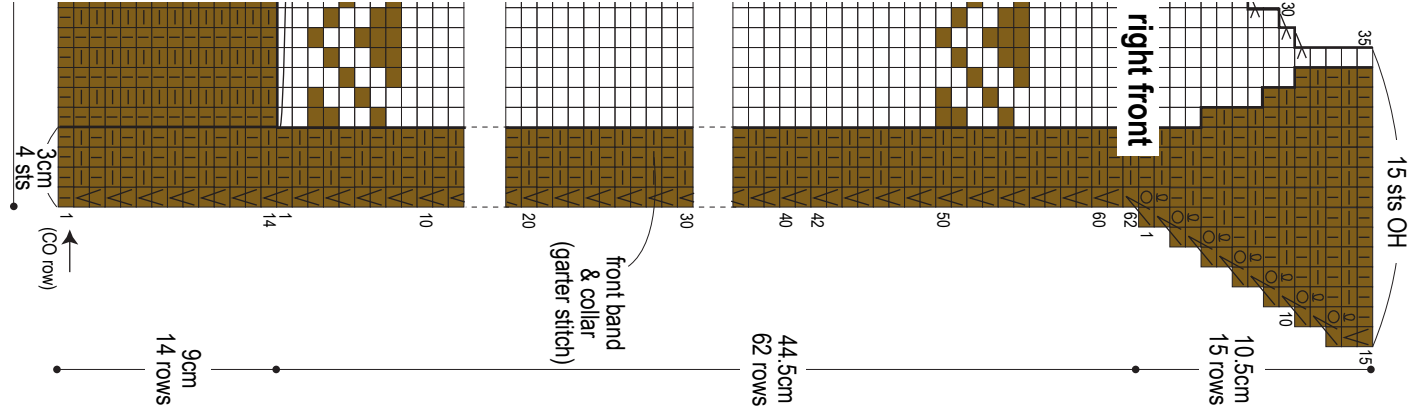
## Abbreviations:

BO = bind off  
CO = cast on  
k = knit stitch  
OH = on hold (that is, place on stitch holder)  
p = purl stitch  
PU = pick up

Sleeve

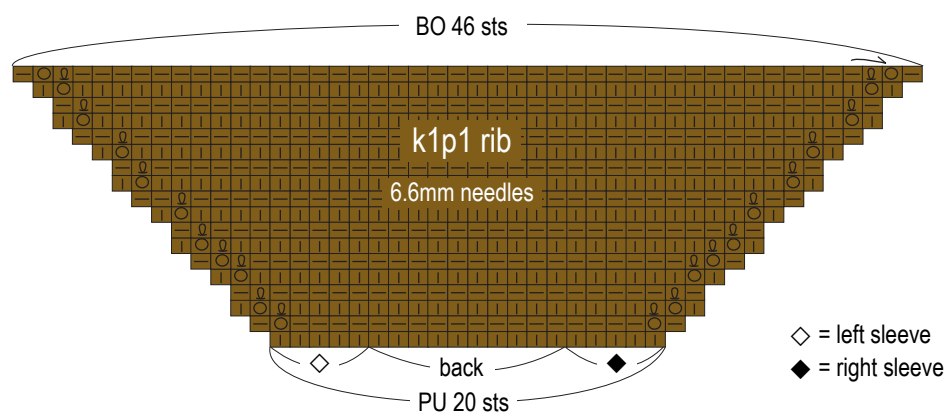




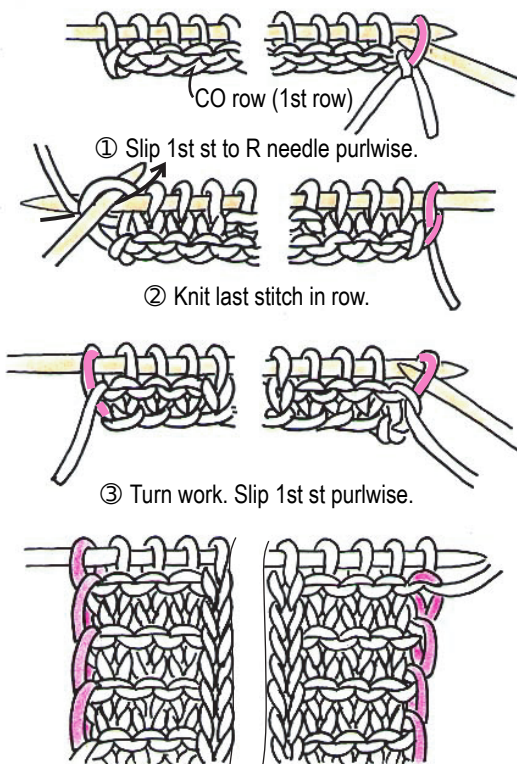


## Collar

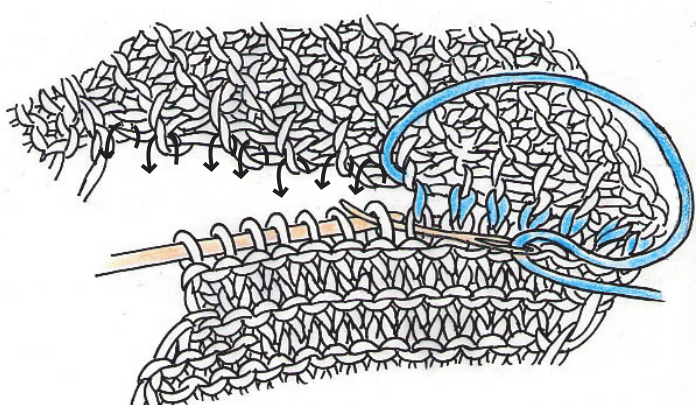
7.0mm needles



## Slip stitch instructions



## Collar seaming instructions



※Align stitches on stitch holders. Seam together with mattress stitch according to diagram.