

211F-11 Arles Long A-line Cardigan



Suggested yarn:

- Pierrot Yarns Arles Fingering [100% baby alpaca; 117 yds/107m per 1.06 oz./30g skein]; color #04 dark brown, 13 skeins [390g]

Tools/Notions:

- 3.9mm (approx. US 6) knitting needles or size necessary to achieve gauge
- 5 buttons (21mm/0.83")

Finished measurements:

- bust 97.5cm/38.39"
- cross back width 48cm/18.90"
- length 87cm/34.25"
- sleeve length 26.5cm/10.43"

Gauge (10cm/4" square):

- stockinette stitch: 21 sts and 31 rows
- k1p1 ribbing: 22 sts and 31 rows

Gauge may vary according to individual knitting style. Change needle size if necessary to achieve gauge. Alternatively, rework pattern with your own gauge measurements.

Knitting Tips

Back body: Cast on with long-tail cast-on method. Work according to schematic, first in k1p1 ribbing, then in stockinette stitch.

Front body: Cast on as for back, but work buttonband in k1p1 ribbing at the same time as you're working the front body in stockinette stitch. Be sure to work buttonholes right front buttonband as you go. For front neckline shaping, decrease (k2tog on right side, ssk on left side) after working 10 sts of buttonband in k1p1 ribbing. At back neckline, increase 1 stitch using backwards loop cast-on method, then continue working front buttonband. Graft 11 sts of back left and right collar together with Kitchener stitch.

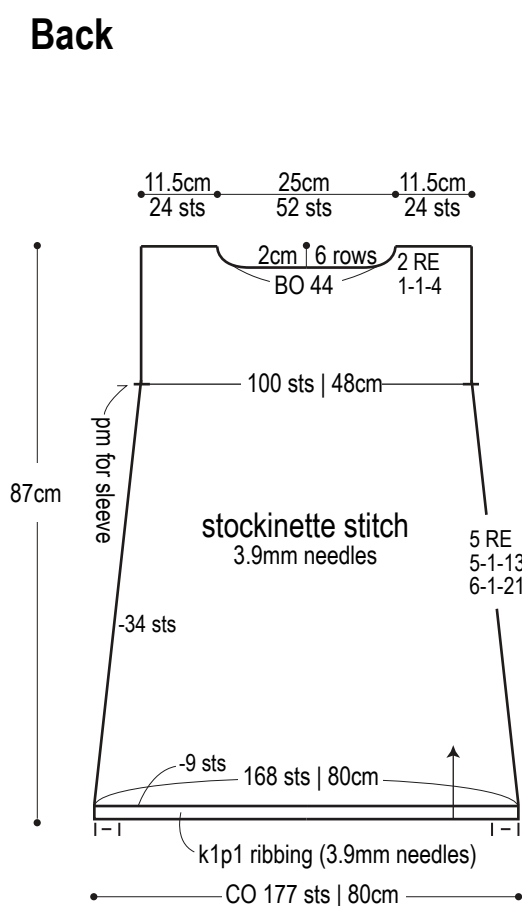
Sleeves & pockets: Cast on with long-tail cast-on method. Work according to schematic.

Finishing: Seam shoulders with crochet slip stitch seam. Seam sleeves to body with crochet slip stitch seam. Seam sides and sleeve undersides in on continuous mattress stitch seam (per side). Seam back collar section to back neckline using stitches-to-rows mattress stitch. Seam pockets to body and fasten buttons to buttonband.

Abbreviations:

BO = bind off
CO = cast on
inc = increase
k = knit
p = purl
RE = row(s) even
= rows-stitches-times

Back

[illegible]

3.9mm needles

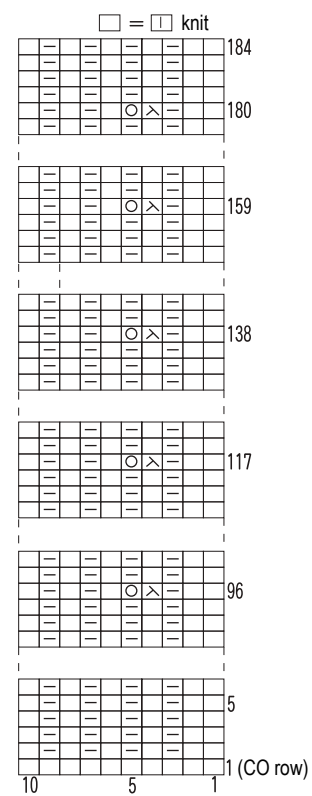


Diagram of the body of the hat. The body is a square with a width of 15cm and a height of 14.5cm. The width is labeled "CO 31 sts" and "15cm". The height is labeled "14.5cm" and "44 rows". The top edge is labeled "k1p1 ribbing (3.9mm needles)" and "BO". The bottom edge is labeled "CO 31 sts". The left edge is labeled "2cm" and "6 rows". The right edge is labeled "+2 sts". The center of the body is labeled "st st" and "3.9mm needles".

Diagram illustrating the dimensions and row counts for a rectangular piece of stockinette stitch:

- Top edge:** BO (Bound Off)
- Left side:** 26.5cm, 82 rows
- Right side:** 24.5cm, 76 rows
- Center:** stockinette stitch, 3.9mm needles
- Bottom edge:** CO 96 sts | 44cm (Cast On)
- Bottom left corner:** -4 sts (4 stitches decrease)
- Bottom right corner:** 2cm | 6 rows (2cm wide, 6 rows high)
- Bottom center:** k1p1 ribbing (3.9mm needles) (knit 1, purl 1 ribbing)

Diagram illustrating the construction details of a long-sleeved cardigan:

- graft with Kitchener stitch**: Points to the shoulder seam and the bottom hem.
- Seam back collar section to back neckline with stitches-to-rows mattress stitch.**: Points to the collar construction.
- buttonhole**: Points to the buttonhole on the front placket.
- pocket**: Points to the pocket on the front.
- mattress stitch**: Points to the side seam.
- 15cm 47 rows**: Points to the pocket dimensions.
- ☆**: A star symbol indicating a measurement of 11cm / 23 stitches.

※Right and left pockets should be placed in mirror image to each other.

☆ = 11cm
23 sts