

# 211F-09 Fleur Neckwarmer



## Suggested yarn:

- Pierrot Yarns Fleur [67% acrylic, 24% wool, 9% nylon; 74 yds/68m per 1.76 oz./50g skein]; color #03 variegated yellow, 3 skeins [150g]

## Tools/Notions:

- 7.0mm (US 7) knitting needles or size necessary to achieve gauge - no US needle size equivalent; closest size is 6.5mm (US 10½)

## Finished measurements:

- width 18cm/7.09"
- length 125cm/49.21"

## Gauge (10cm/4" square):

- pattern stitch: 18 sts and 16.5 rows

*Gauge may vary according to individual knitting style. Change needle size if necessary to achieve gauge. Alternatively, rework pattern with your own gauge measurements.*

## Knitting Tips

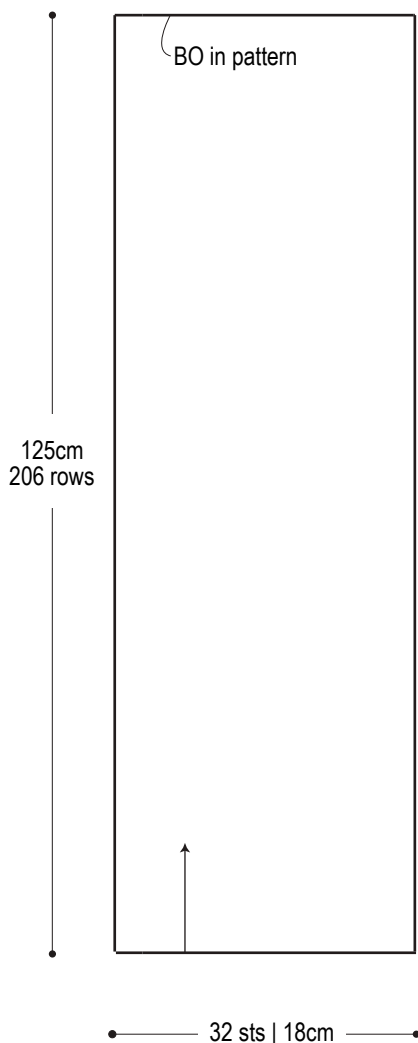
**Neckwarmer:** Cast on with long-tail cast-on method. Work in pattern stitch. Bind off in pattern.

**Finishing:** Seam cast-on edge to bind-off edge with whipstitch.

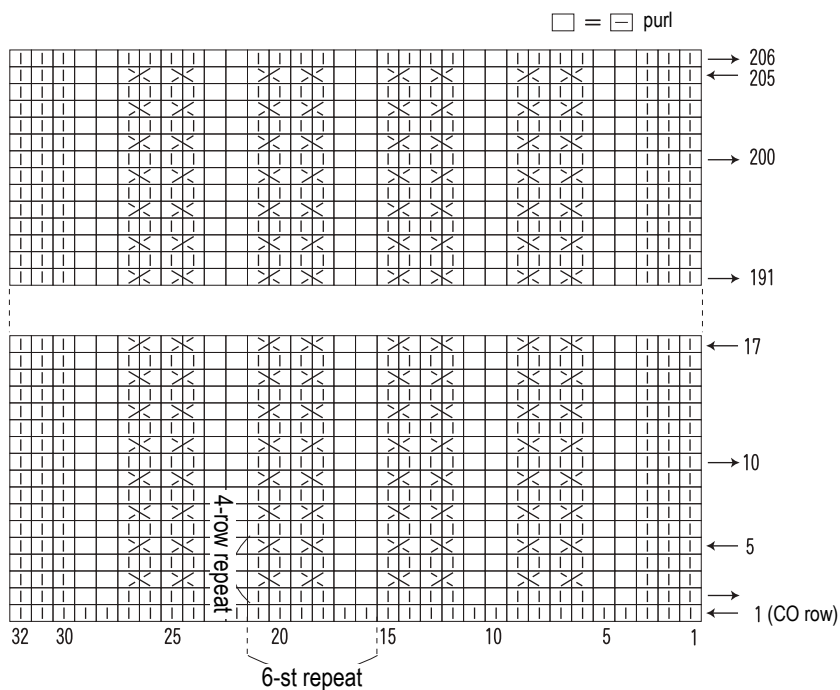
## Abbreviations:

BO = bind off  
CO = cast on  
k = knit  
p = purl

## Neckwarmer schematic



## Stitch pattern



□ = C2B

**with cable needle:** slip 1 st knitwise onto cable needle and hold it in back, k1, k1 from cable needle.

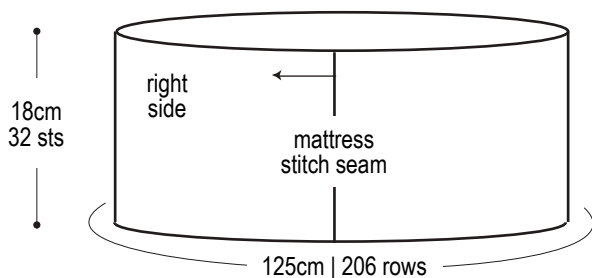
**without cable needle:** insert R needle knitwise into second st on L needle (with R needle in front of L needle). Knit second st, leaving first st on L needle and *without* dropping second st off of L needle. Knit first stitch, then pull L needle out of second stitch.

□ = C2F

**with cable needle:** slip 1 st knitwise onto cable needle and hold it in front, k1, k1 from cable needle.

**without cable needle:** insert R needle knitwise into second st on L needle (with R needle behind L needle). Knit second st, leaving first st on L needle and *without* dropping second st off of L needle. Knit first stitch, then pull L needle out of second stitch.

## Finishing



Use this QR code on your smartphone to view a video about how to work C2F.



※To view on computer, search on the Pierrot Yarns website instead.

検索