

# 212w-16 Chiffon Jacket & Skirt



## Suggested yarn:

- Pierrot Yarns Chiffon [100% baby alpaca; 117 yds/107m per 1.06 oz./30g skein];
  - jacket: color #58 scarlet, 6 skeins [165g]
  - skirt: color #58 scarlet, 6 skeins [180g]
- skirt only: Pierrot Yarns Arles Fingering [100% baby alpaca; 117 yds/107m per 1.06 oz./30g skein]; color #05 light gray, 4 skeins [100g]

## Tools/Notions:

- 3.9mm (approx. US 6), 4.5mm (US 7), and 4.8mm (approx. US 8) straight knitting needles or sizes necessary to achieve gauge
- 3.3mm (approx. US 3) double-pointed knitting needles or size necessary to achieve gauge
- 5 buttons (18mm/0.71")
- 1 piece of elastic for waistband (2cm/0.79" wide, 50cm/19.69" long)

## Finished measurements:

- jacket: chest 72cm/28.35"      cross back width 26cm/10.24"      length 30cm/11.81"      sleeve length 33cm/12.99"
- skirt: waist 48cm/19.29"      length 34cm/13.39"

## Gauge (10cm/4" square):

- jacket: pattern stitch (with 4.5mm needles): 22 sts and 30 rows
- jacket: pattern stitch (with 4.8mm needles): 20 sts and 28 rows
- skirt: pattern stitch (with 3.9mm needles): 25 sts and 32 rows
- skirt: stockinette stitch (with 3.9mm needles): 21 sts and 30 rows

## Knitting Tips

✳️**Note:** Jacket is worked with 2 strands of yarn held together. Skirt is worked with only 1 strand of yarn.

**Jacket back, front, and sleeves:** Cast on with long-tail cast-on method. Work in seed stitch and pattern stitch. For front pieces, work body, buttonbands, and collar together at the same time. Work buttonholes in right front band.

**Cuff belt:** Cast on with long-tail cast-on method. Knit according to chart, then bind off in pattern.

**Jacket finishing:** Seam shoulders with crochet slip stitch. Seam sides and sleeve undersides with mattress stitch. Pick up stitches around neckline. Work collar in seed stitch, changing needle size where indicated (in order to adjust gauge). Seam sleeves to body with crochet slip stitch. Fasten cuff belts and buttons where indicated. Buttons should be sewn to left front.

**Skirt parts A & B:** Cast on with long-tail cast-on method. Work 56 rows of pattern stitch for part A. On next row, work decreases. Work part B in stockinette stitch. Bind off in pattern.

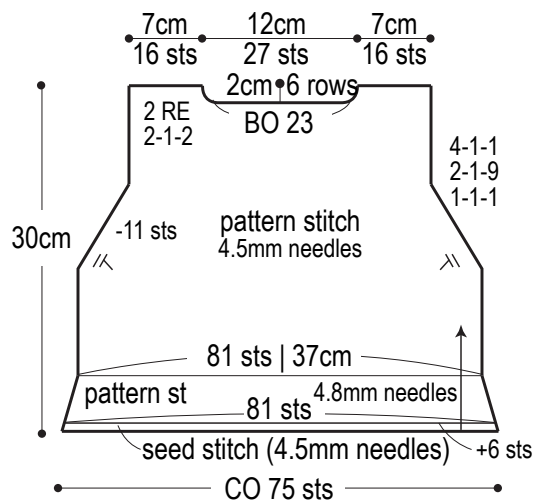
**Skirt part C:** Cast on with long-tail cast-on method. Work 56 rows of pattern stitch. Work decreases on next row, then bind off in pattern.

**Skirt finishing:** Knit two of part A and two of part B. Seam sides together with mattress stitch. Lay part B on top of part C, aligning bind-off edges. Pick up stitches (through both layers) and work waistband in stockinette stitch in the round. Fold waistband where indicated, then insert elastic and tack down.

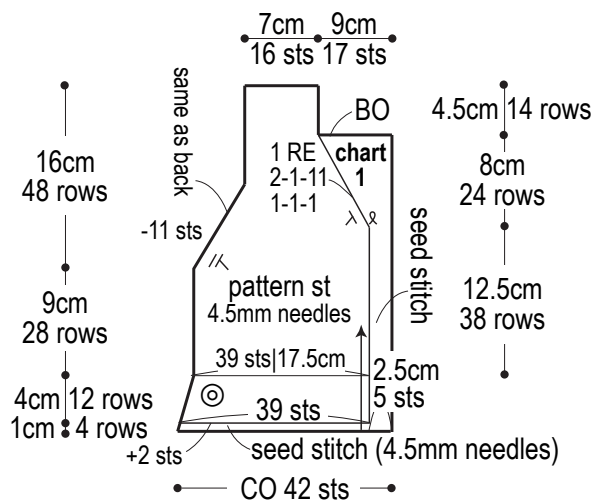
## Abbreviations:

BO = bind off      CO = cast on      DPNs = double-pointed knitting needles      PU = pick up      RE = row(s) even      #-#-# = rows-stitches-times

## Back



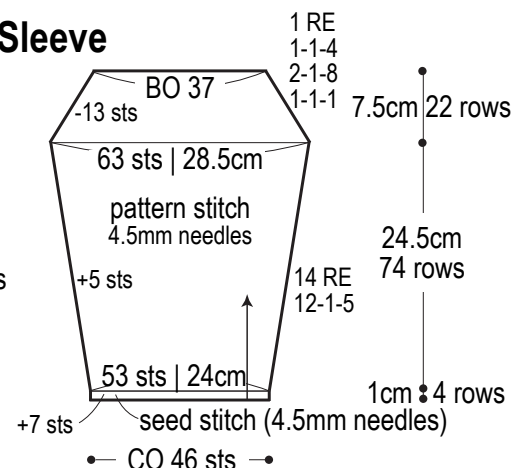
## Right front



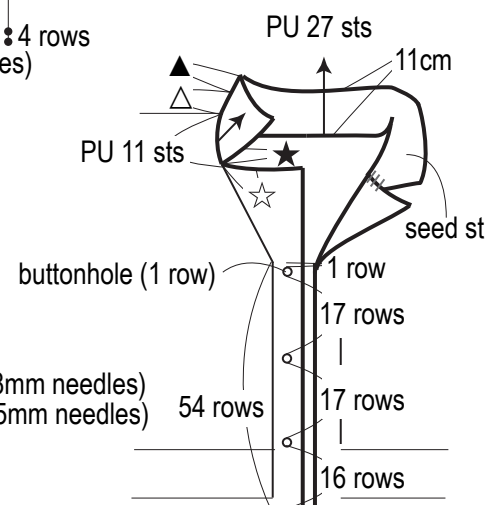
⊙ = pattern stitch (4.8mm needles)

\*Reverse shaping of right front for left front.

## Sleeve



## Finishing



☆ = 8 sts

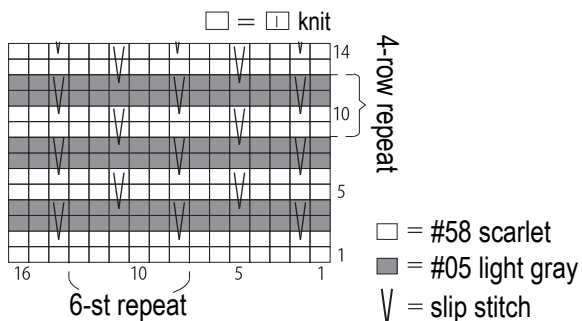
★ = 12 rows

▲ = 10 rows (4.8mm needles)

△ = 20 rows (4.5mm needles)

※Seam ☆ and ★ with whipstitch.

## Pattern stitch



Use this QR code on a smartphone to view a video about how to work the slip stitch design.



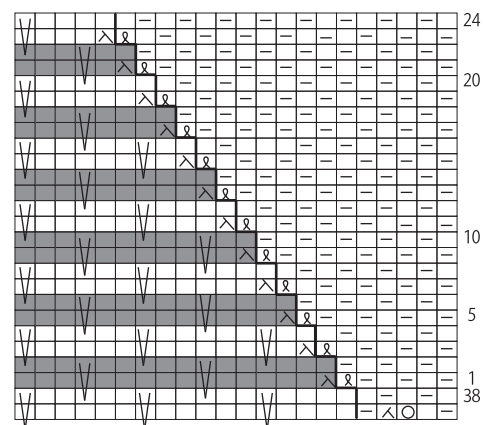
※To view on computer, search on the Pierrot Yarns website instead.

検索

## Collar: chart 1

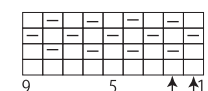
4.5mm needles

□ = □ knit



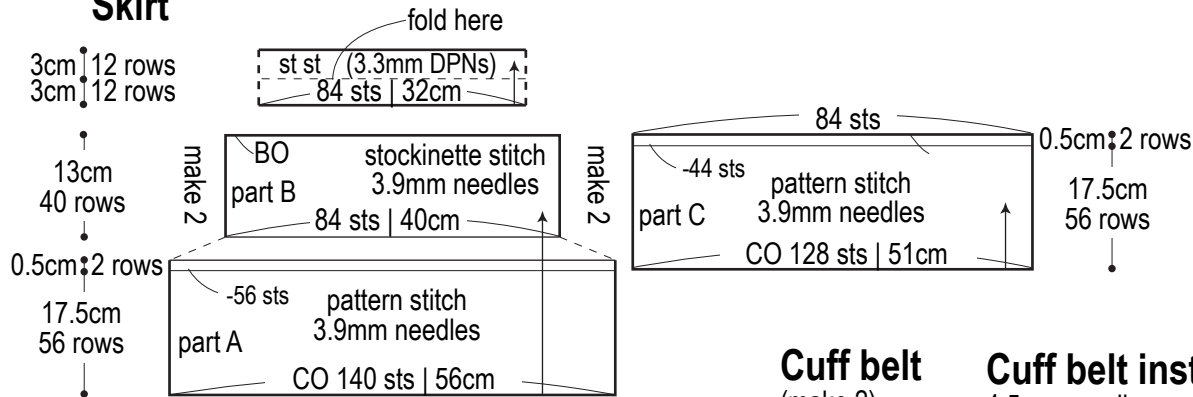
## Seed stitch

□ = □ knit



left front, back, right front, sleeve

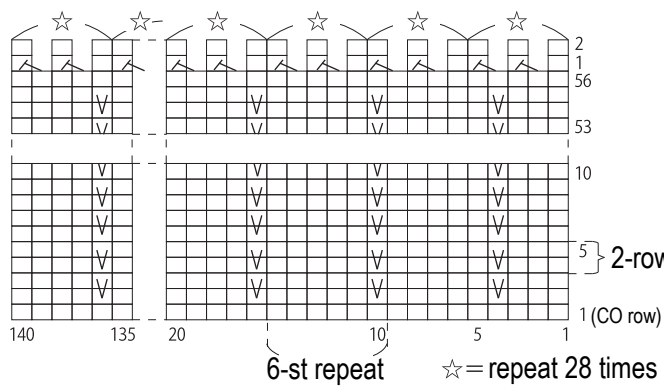
## Skirt



## Part A: pattern stitch & decreases

3.9mm needles

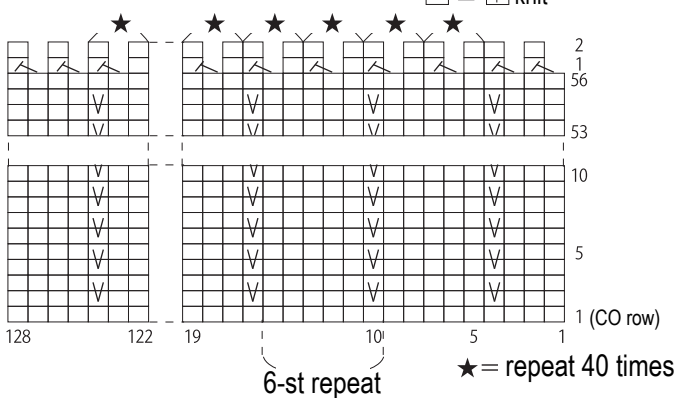
□ = □ knit



## Part C: pattern stitch & decreases

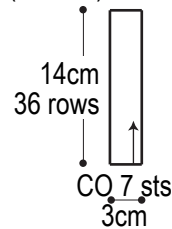
3.9mm needles

□ = □ knit



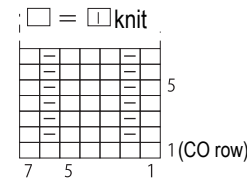
## Cuff belt

(make 2)

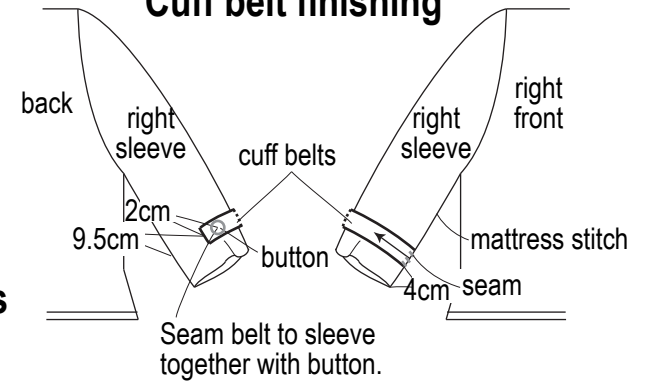


## Cuff belt instructions

4.5mm needles

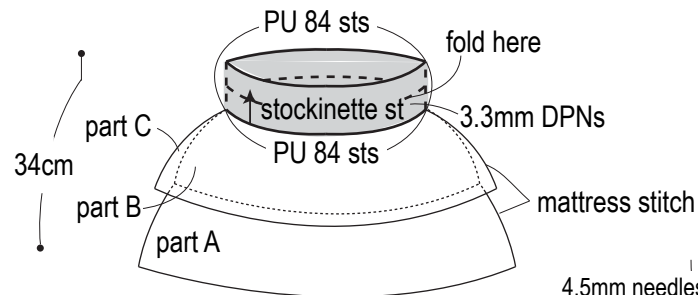


## Cuff belt finishing

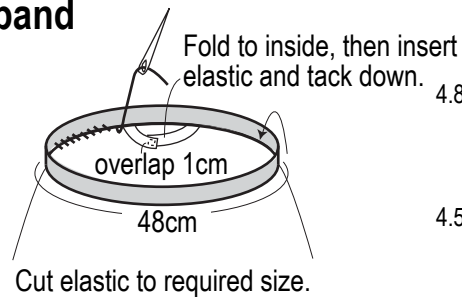


※ Attach belt to left cuff in the same manner.

## Finishing



## Waistband



## Buttonholes

□ = □ knit

