

26-27-9 Winter Casual Poncho



Suggested yarn:

- Pierrot Yarns Colorful Lamb Wool [70% lambswool, 30% nylon; 98 yds/90m per 1.41 oz./40g skein]; color #2, 11 skeins [440g] – *discontinued; please choose appropriate substitute*
 - *suggested substitute:* Pierrot Yarns Soft Merino [100% merino wool; 104 yds/95m per 1.41 oz./40g skein]; color #5 pink, 11 skeins [440g]
- Pierrot Yarns Cutie Mohair [28% kid mohair, 28% acrylic, 14% superwash wool, 30% nylon; 339 yds/310m per 0.88 oz./25g skein]; color #30 mocha brown, 4 skeins [95g]

Tools/Notions:

- 4.5mm (US 7) straight knitting needles or size necessary to achieve gauge
- 3.9mm (approx. US 6) and 4.5mm (US 7) double-pointed or circular knitting needles or sizes necessary to achieve gauge
- 4.0mm (US G) crochet hook or size necessary to achieve gauge

Finished measurements:

- bust: one size fits most
- length: 61cm/24.02"

Gauge (10cm/4" square):

- pattern stitch: 18 sts and 22 rows

Gauge may vary according to individual knitting style. Change needle size if necessary to achieve gauge. Alternatively, rework pattern with your own gauge measurements.

Knitting Tips

※Work body alone with 2 strands of yarn held together (1 strand of Colorful Lamb Wool and 1 strand of Cutie Mohair).

Body: Cast on with long-tail cast-on method. Begin working from neckline downward in pattern stitch. Referring to chart, work increases to right and left of the center, being sure to keep 2 knit stitches in a line down the center of the poncho. Bind off in pattern. Make another of the same piece (one for the front, one for the back).

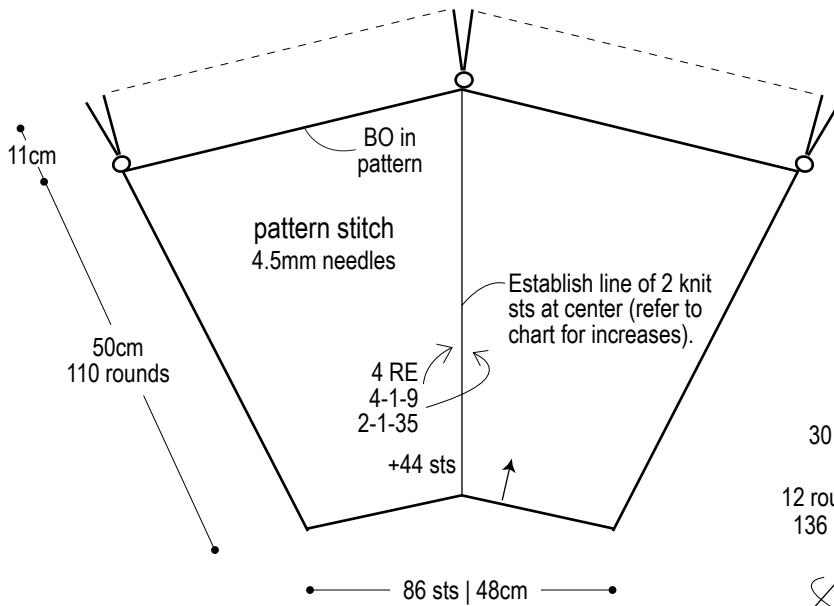
Finishing: Seam sides with mattress stitch. Pick up stitches around neckline. Work collar in k2p3 ribbing for 24 rounds, then decrease according to chart and begin working in k2p2 ribbing. Bind off with 2x2 tubular bind-off method. Crochet a double chain cord, and fasten tassels to each end of cord. Attach fringe to hem.

Abbreviations:

BO = bind off
ch = chain
PU = pick up
RE = row(s) even
= rows-stitches-times

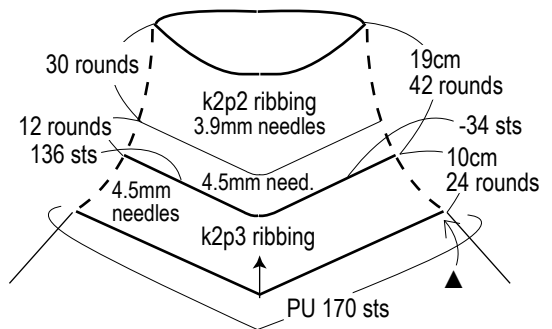
Front & back

Except for fringe, use 2 strands held together (1 strand of Colorful Lamb Wool, 1 strand of Cutie Mohair).

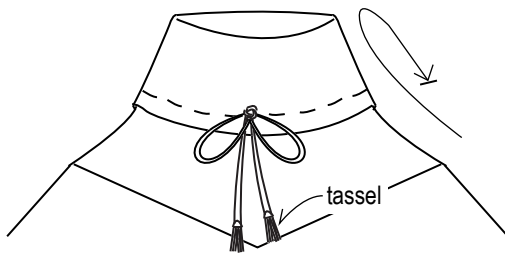


※Fringe: fold 5 strands of Colorful Lamb Wool (each 25cm long) in half; tie to hem edge in 94 places around entire hem.

Collar

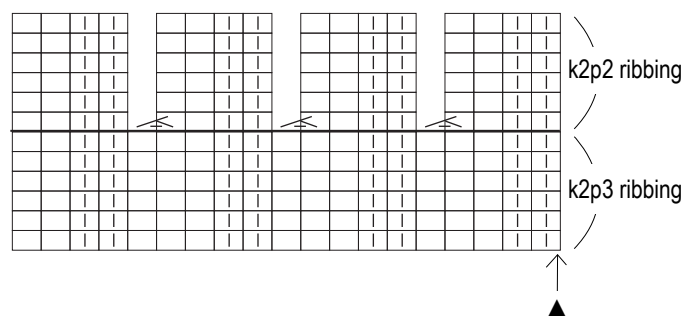


Finishing

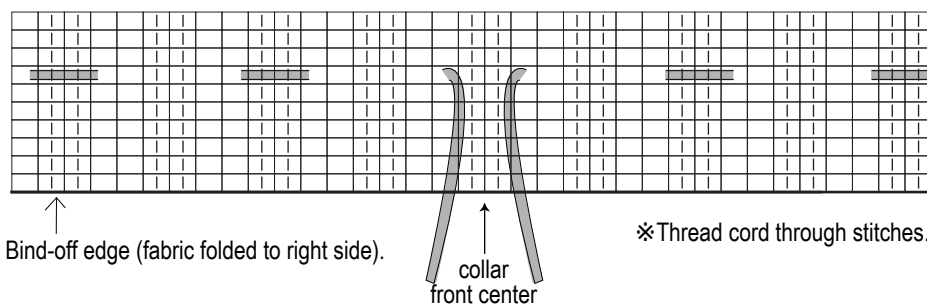


Collar: decreases between k2p3 ribbing and k2p2 ribbing

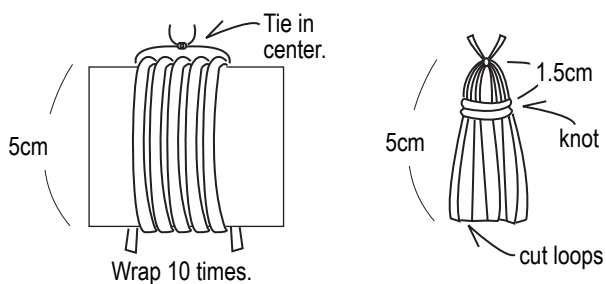
□ = □ purl



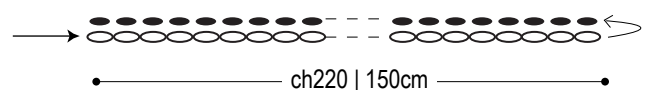
How & where to thread cord

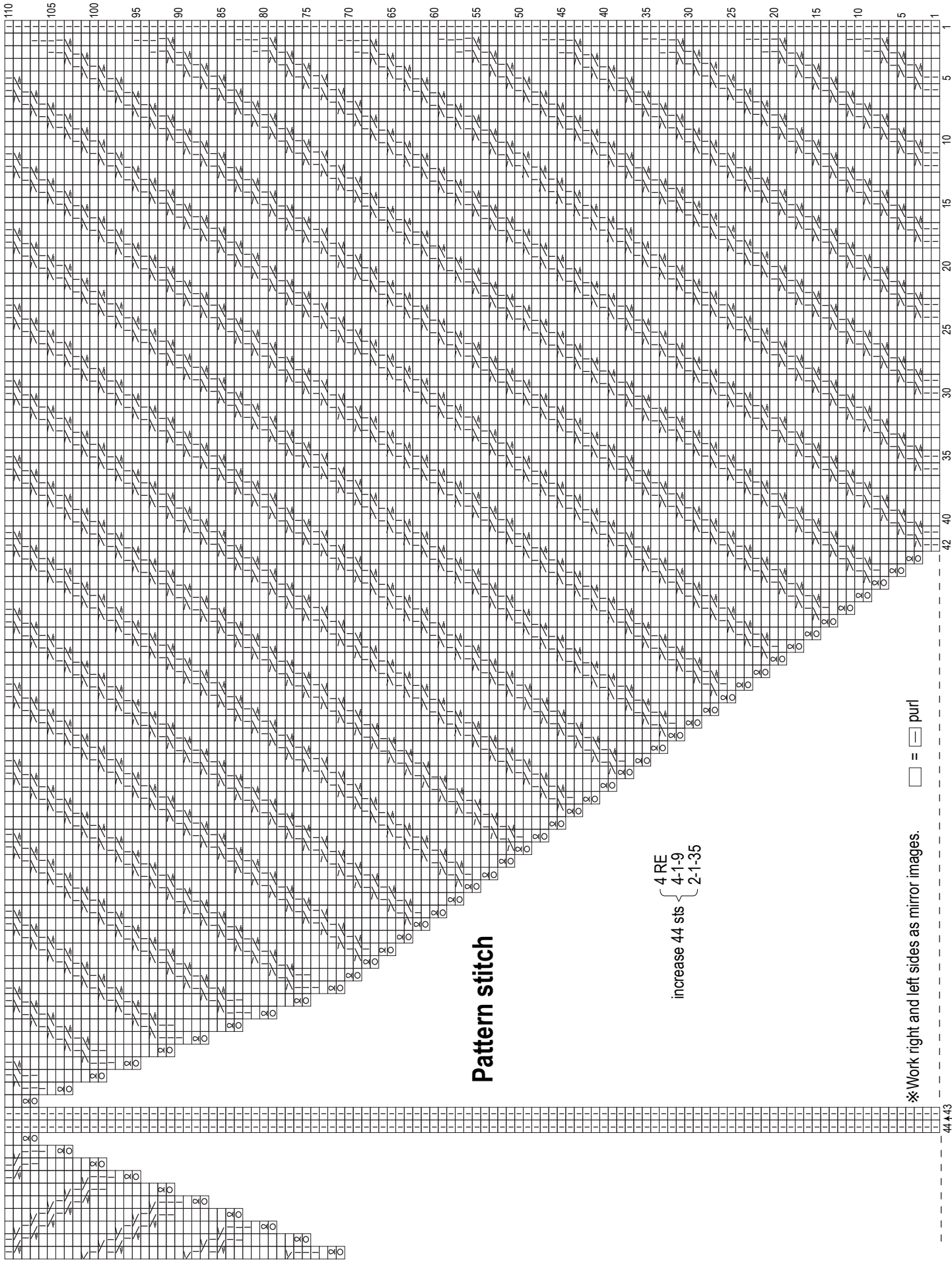


Tassel instructions



Cord: double chain (4.0mm hook)





Pattern stitch

increase 44 sts {
 4 RE {
 4-1-9
 2-1-35

※ Work right and left sides as mirror images. ◻ = ◻ pur1

44+43
 center