

211F-24 Foire Sweater Dress



Suggested yarn:

- Pierrot Yarns Foire 4-ply [100%undyed Uruguayan wool; 178 yds/163m per 1.41 oz./40g skein];
 - 90cm size:
 - color #51 grage, 3 skeins [115g]
 - color #54 brown, 3 skeins [115g]
 - 120cm size:
 - color #52 mixed grage, 5 skeins [170g]
 - color #55 dark brown, 5 skeins [170g]

Tools/Notions:

- 3.9mm (approx. US 6) and 4.5mm (US 7) straight knitting needles or sizes necessary to achieve gauge
- 3.9mm (approx. US 6) double-pointed knitting needles or size necessary to achieve gauge

Finished measurements:

Japanese children's clothing sizes are based on the child's height in centimeters. 90cm size (35.43") and 120cm size (47.24") correspond roughly to US children's sizes 3T and 6.

- | | |
|--------------------------------|----------------------------------|
| • 90cm size: | • 120cm size: |
| • bust 71cm/27.95" | • bust 82cm/32.28" |
| • cross back width 26cm/10.24" | • cross back width 28.5cm/11.22" |
| • length 46.5cm/18.31" | • length 61.5cm/24.21" |
| • sleeve length 18.5cm/7.28" | • sleeve length 20.5cm/8.07" |

Gauge (10cm/4" square):

- twisted k1p1 ribbing: 24 sts and 27 rows
- stockinette stitch: 18 sts and 26 rows
- seed stitch: 19 sts and 30 rows

Gauge may vary according to individual knitting style. Change needle size if necessary to achieve gauge. Alternatively, rework pattern with your own gauge measurements.

Knitting Tips

※Each size is worked with 2 strands of yarn held together. For 90cm size, knit with 1 strand of color #51 grage and 1 strand of color #54 brown held together. For 120cm size, knit with 1 strand of color #52 mixed grage and 1 strand of color #55 dark brown held together.

Front and back body: Cast on with long-tail cast-on method. Work in twisted k1p1 ribbing, then in stockinette stitch.

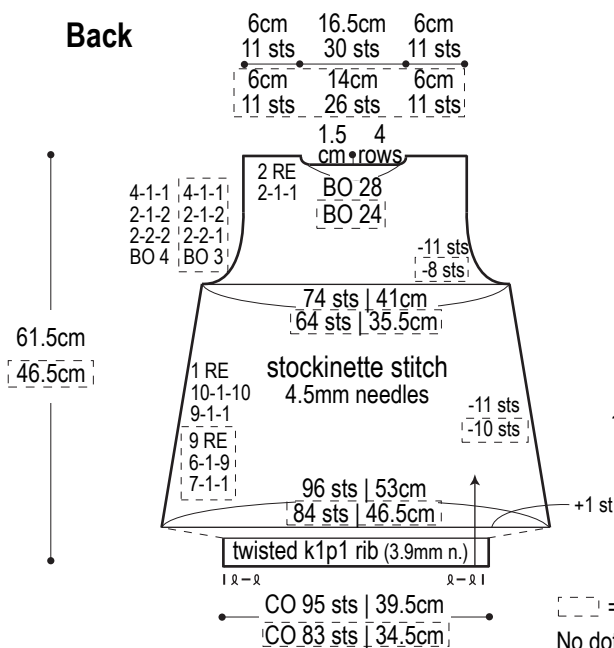
Sleeves: Cast on with long-tail cast-on method. Work in k1p1 ribbing, then stockinette stitch.

Finishing: Seam sides and sleeve undersides with mattress stitch. Seam shoulders with slip stitch. Work collar in k1p1 ribbing in the round. Seam sleeves to body with slip stitch. Knit 2 pockets. Sew pockets to dress where shown; seam sides of pockets with mattress stitch. Gather and seam bottom of pocket with whipstitch.

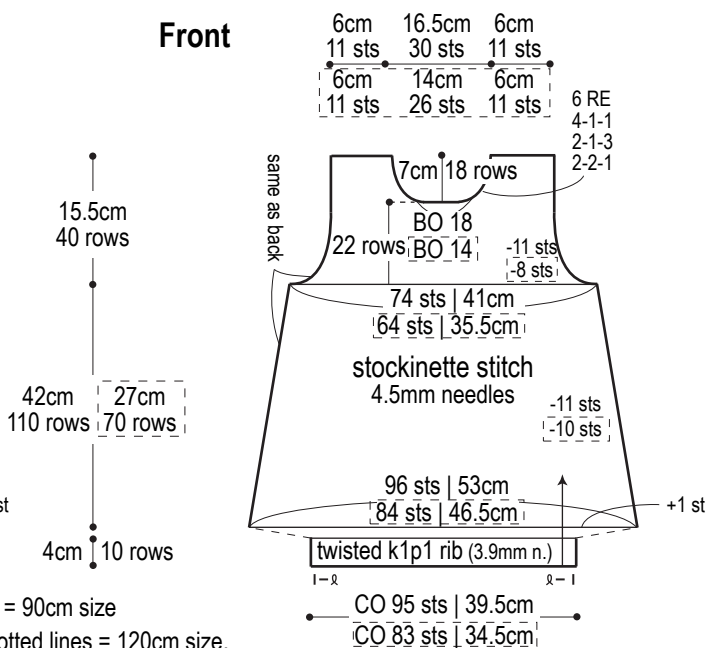
Abbreviations:

BO = bind off
CO = cast on
PU = pick up
RE = row(s) even
= rows-stitches-times

Back



Front

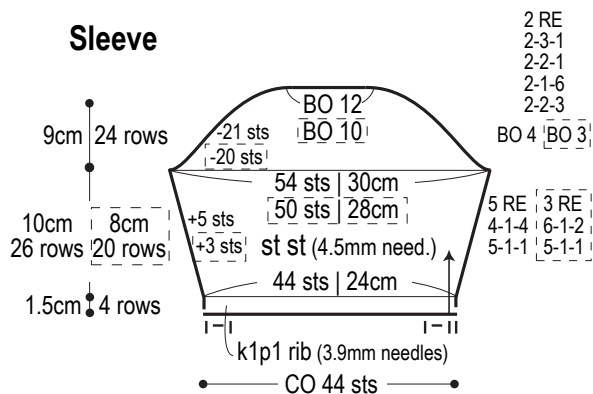


[] = 90cm size

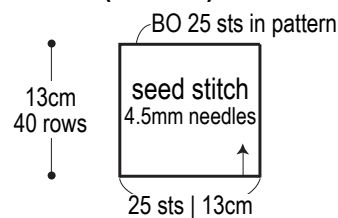
No dotted lines = 120cm size.

*Where only one set of numbers is listed, information refers to both sizes.

Sleeve

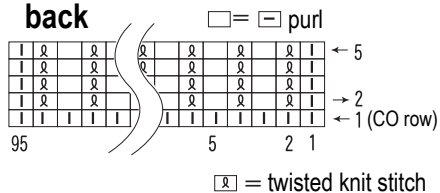


Pocket (make 2)

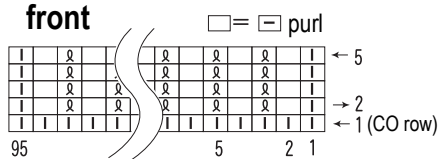


Twisted k1p1 ribbing (3.9mm needles)

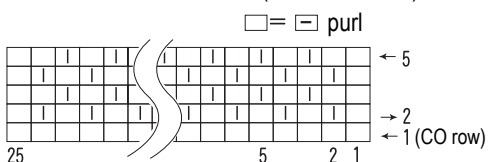
back



front



Pocket: seed stitch (4.5mm needles)



Finishing

