

26-183-KC Shell-stitch Handbag



Suggested yarn:

- Pierrot Yarns Silky [50% cotton, 50% rayon; 82 yds/75m per 1.41 oz./40g skein]; - *discontinued; please choose appropriate substitute*
 - color #4 grayish pink, 1 skein [40g]
 - color #5 light lavender, 1 skein [15g]

Tools/Notions:

- 3.5mm (US E) crochet hook or size necessary to achieve gauge

Finished measurements:

- bottom diameter 16cm/6.30"
- length 16cm/6.30"

Gauge (10cm/4" square):

- single crochet (US): 19 sts and 20 rows
- pattern stitch: 19 sts and 10 rows

Gauge may vary according to individual crochet style. Change hook size if necessary to achieve gauge. Alternatively, rework pattern with your own gauge measurements.

Crochet Tips

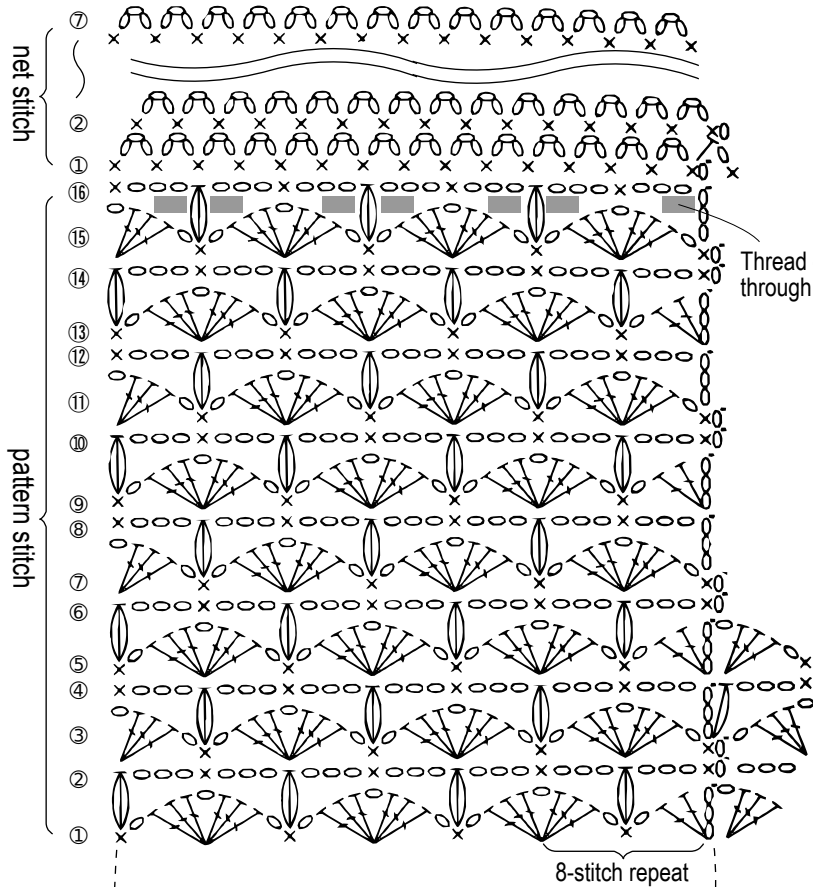
Work 8 single crochet (US) stitches into magic ring. Work 13 rounds, increasing as indicated, to form bottom of bag. Continue to sides. Work 16 rounds of pattern stitch without increasing or decreasing. Continue to ch3 net stitch, working 7 rounds.

With two strands of yarn held together, ch70 (48cm) to make drawstring. Make two. Thread drawstrings through body of bag. Tie knots.

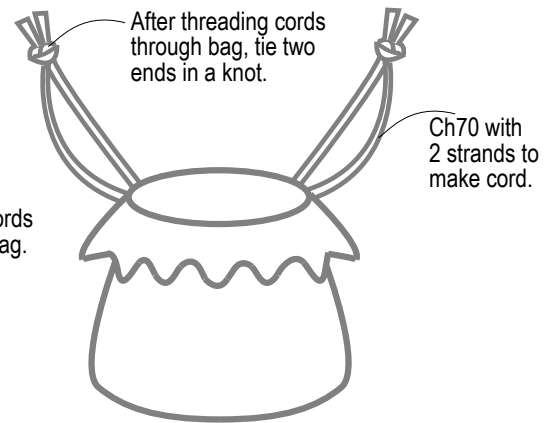
Abbreviations:

- ch = chain
- dc = double crochet (US)
- hdc = half double crochet (US)
- m = magic ring
- sc = single crochet (US)
- sc2tog = single crochet (US) two stitches together
- sl st = slip stitch

Instructions



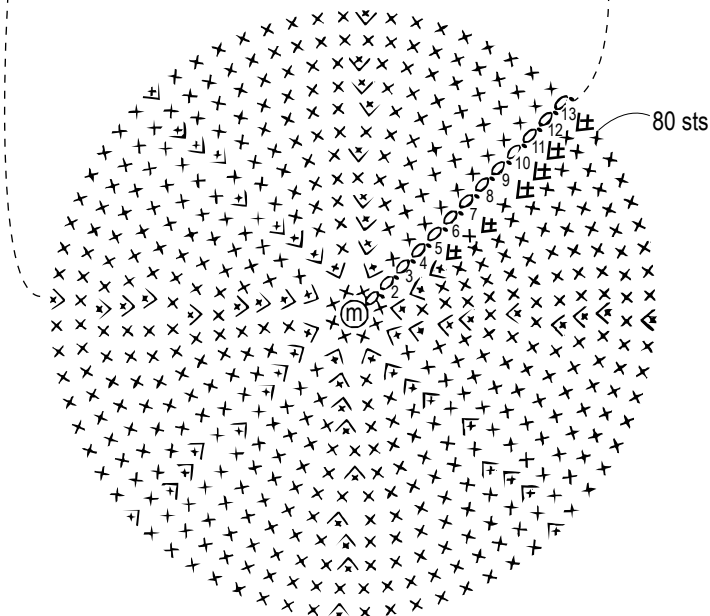
Finishing



Thread cords through bag.

Bottom

- round 13 80 sts (+8 sts)
- round 12 72 sts (work even)
- round 11 72 sts (+8 sts)
- round 10 64 sts (+8 sts)
- round 9 56 sts (+8 sts)
- round 8 48 sts (work even)
- round 7 48 sts (+8 sts)
- round 6 40 sts (work even)
- round 5 40 sts (+8 sts)
- round 4 32 sts (+8 sts)
- round 3 24 sts (+8 sts)
- round 2 16 sts (+8 sts)
- round 1 sc8 into magic ring



diameter: 13cm

○ = ch

× = sc

⋈ = work 2 sc into same stitch

⋄ = sc2tog

⊖ = 3-hdc bobble

⊖ = shell: (3dc, ch1, 3dc) into same st

• = sl st