

211-527-cap Colorful Hat



Suggested yarn:

- Pierrot Yarns Junmo Namibuto2 [100% superwash wool; 79 yds/72m per 1.41 oz./40g skein];
 - color #1 off-white, 1 skein [40g]
 - color #6 gold brown, 1 skein [40g]
 - color #8 moss, 1 skein [40g]
 - color #15 ultramarine blue, 1 skein [40g]
 - color #21 wine red, 1 skein [40g]

Tools/Notions:

- 7.0mm crochet hook or size necessary to achieve gauge (closest US size is K/6.5mm)

Finished measurements:

- head circumference 52cm/20.47"
- length 21cm/8.27"

Gauge (10cm/4" square):

- pattern stitch: 12.5 sts and 8.5 rows

Gauge may vary according to individual crochet style. Change hook size if necessary to achieve gauge. Alternatively, rework pattern with your own gauge measurements.

Crochet Tips

※Entire hat worked with 2 strands of yarn held together.

Hat: Create magic ring. Work 22 double crochet (US) stitches into magic ring (including ch3 for post). Continue, following chart in pattern stitch and changing color when indicated. Change color every round for edging.

Pom-pom: Using remaining yarn, create pom-pom by wrapping 5 strands of yarn (1 of each color) around a piece of cardboard until pom-pom measures 11cm/4.33" in diameter (*before cutting*).

Finishing: Fasten to top of hat.

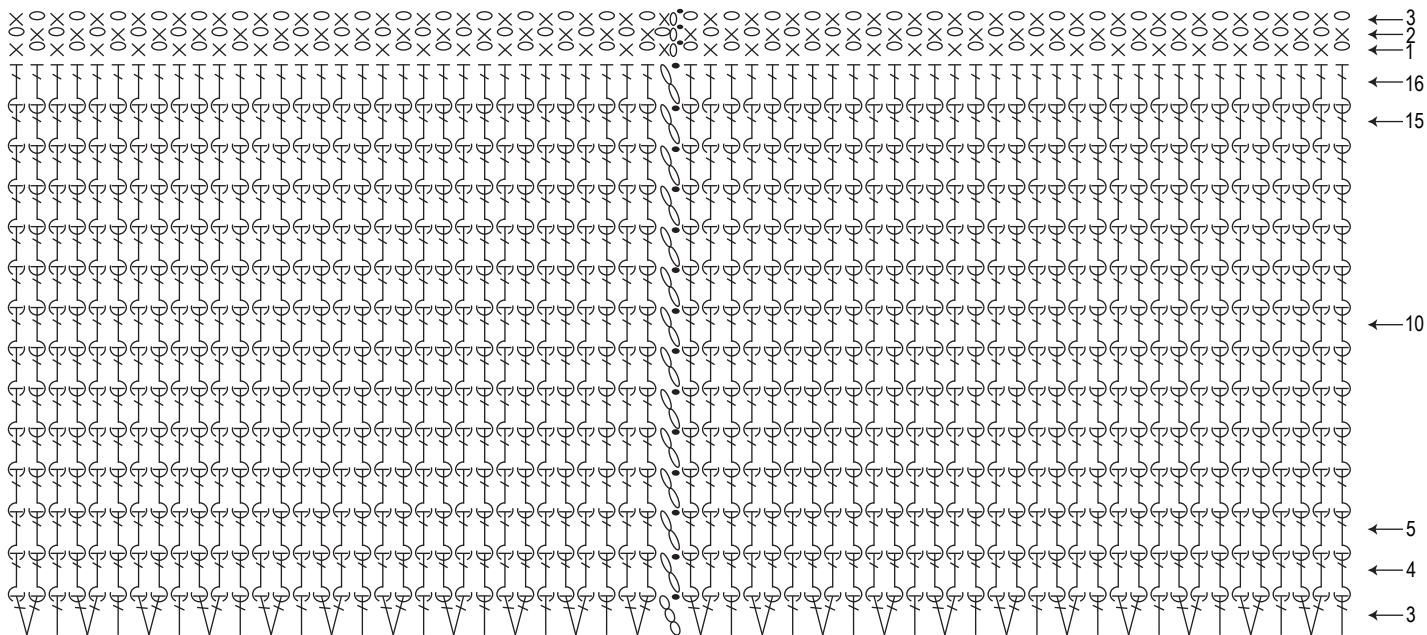
Abbreviations:

bpdc = back post double crochet (US)

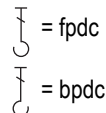
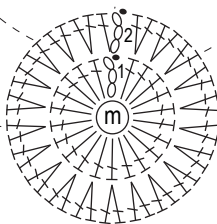
fpdc = front post double crochet (US)

m = magic ring

Hat pattern (7.0mm hook)



round #	st count
4-16	66 sts (work even)
3	66 sts (+22 sts)
2	44 sts (+22 sts)
1	22 sts (work into magic ring)



Color sequence

round #	color #
edging 3	#8 moss
edging 2	#21 wine red
edging 1	#15 ultramarine blue
16	#6 gold brown
15	#1 off-white, #6 gold brown
14	#1 off-white, #8 moss
13	#1 off-white, #21 wine red
12	#8 moss
11	#1 off-white, #15 ultramarine blue
10	#1 off-white, #6 gold brown
9	#1 off-white, #8 moss
8	#21 wine red
7	#1 off-white, #21 wine red
6	#1 off-white, #15 ultramarine blue
5	#1 off-white, #6 gold brown
4	#4 ultramarine blue
3	#1 off-white, #8 moss
2	#1 off-white, #21 wine red
1	#1 off-white, #15 ultramarine blue

Hat

