

amicomo9-4 Ladies' Aran Poncho



Suggested yarn:

- Pierrot Yarns Soft Merino Bulky [100% merino wool; 44 yds/40m per 1.41 oz./40g skein]; color #4 dark gray, 15 skeins [590g]

Tools/Notions:

- 6.3mm (approx. US 10½), 7.0mm (no US equivalent), 8.0mm (US 11), and 9mm (US 13) knitting needles or sizes necessary to achieve gauge
- cable needle
- 3 buttons (30mm/1.18")

Finished measurements:

- length 49cm/19.29"

Gauge (10cm/4" square):

- pattern stitch A, B: 18 sts and 20 rows

Gauge may vary according to individual knitting style. Change needle size if necessary to achieve gauge. Alternatively, rework pattern with your own gauge measurements.

Knitting Tips

Body: Cast on with crochet provisional cast-on method and work in pattern stitch A with evenly spaced increases according to schematics. Bind off somewhat tightly in pattern. Pick up live stitches from hem edge and work edging in pattern stitch B. Bind off in pattern.

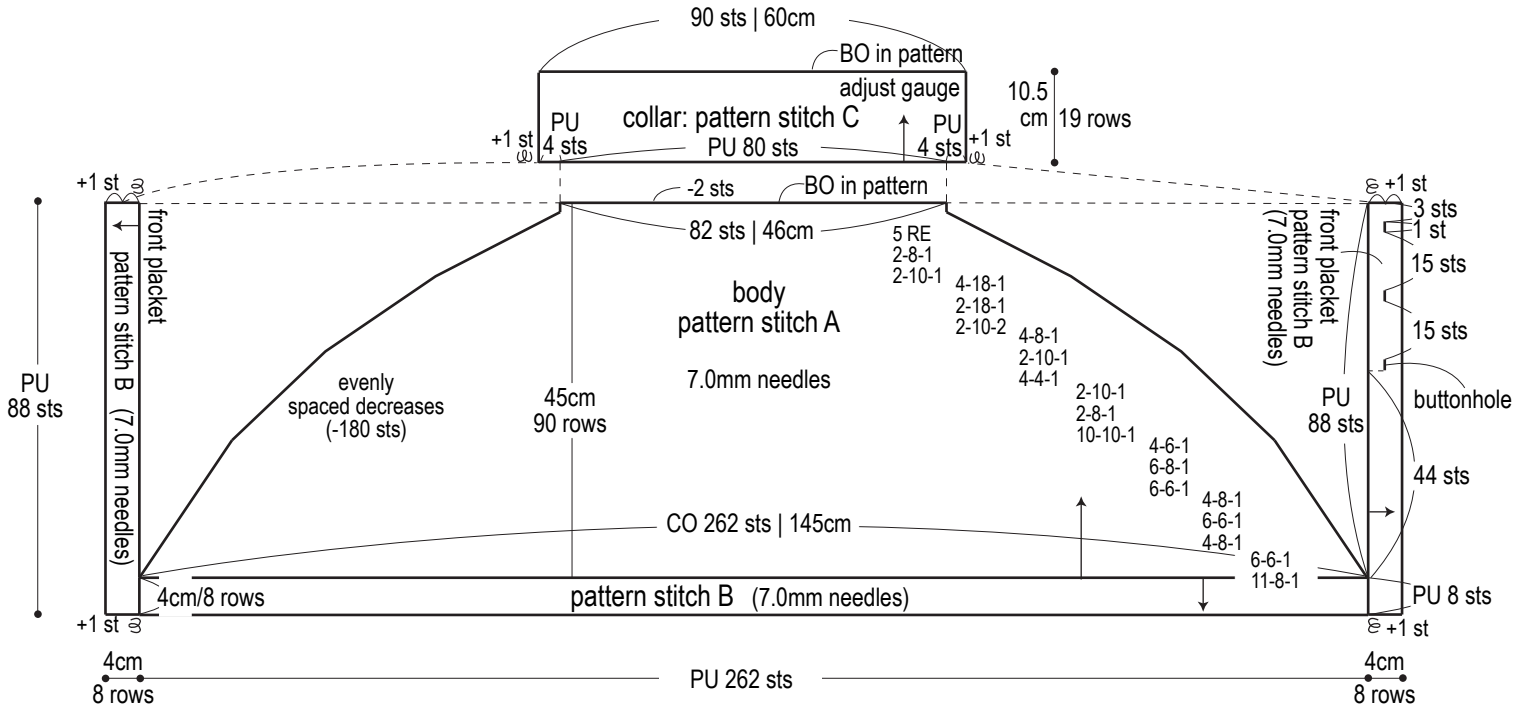
Front placket: Pick up stitches from body and work in pattern stitch B. Work buttonholes in right front placket. Bind off in pattern (the same as for the hem). Fasten buttons.

Collar: Pick up stitches from right side around neckline, plus 4 stitches from each front band (right and left). Begin working in pattern stitch C from the second row, which will be the right side of the collar. Change needle size while working collar to adjust gauge as indicated.

Abbreviations:

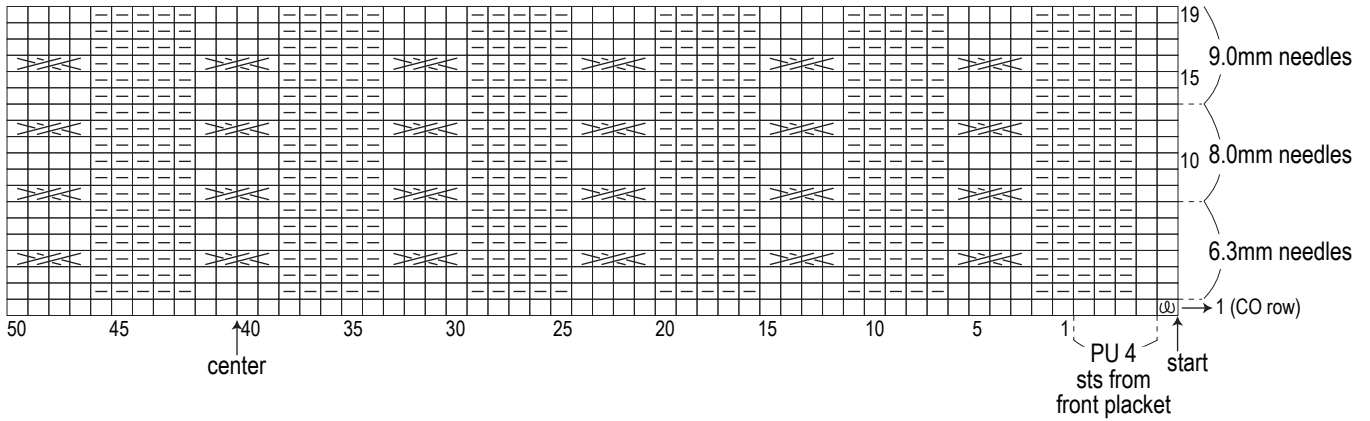
BO = bind off
CO = cast on
PU = pick up
RE = row(s) even
= rows-stitches-times

Poncho



Pattern stitch C

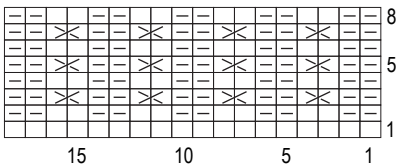
□ = □ knit



Pattern stitch B

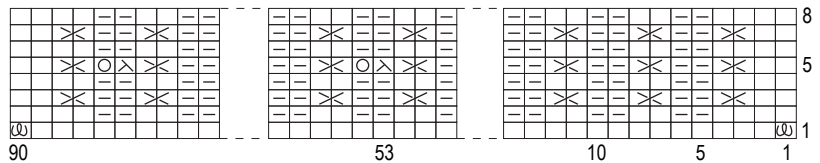
7.0mm needles

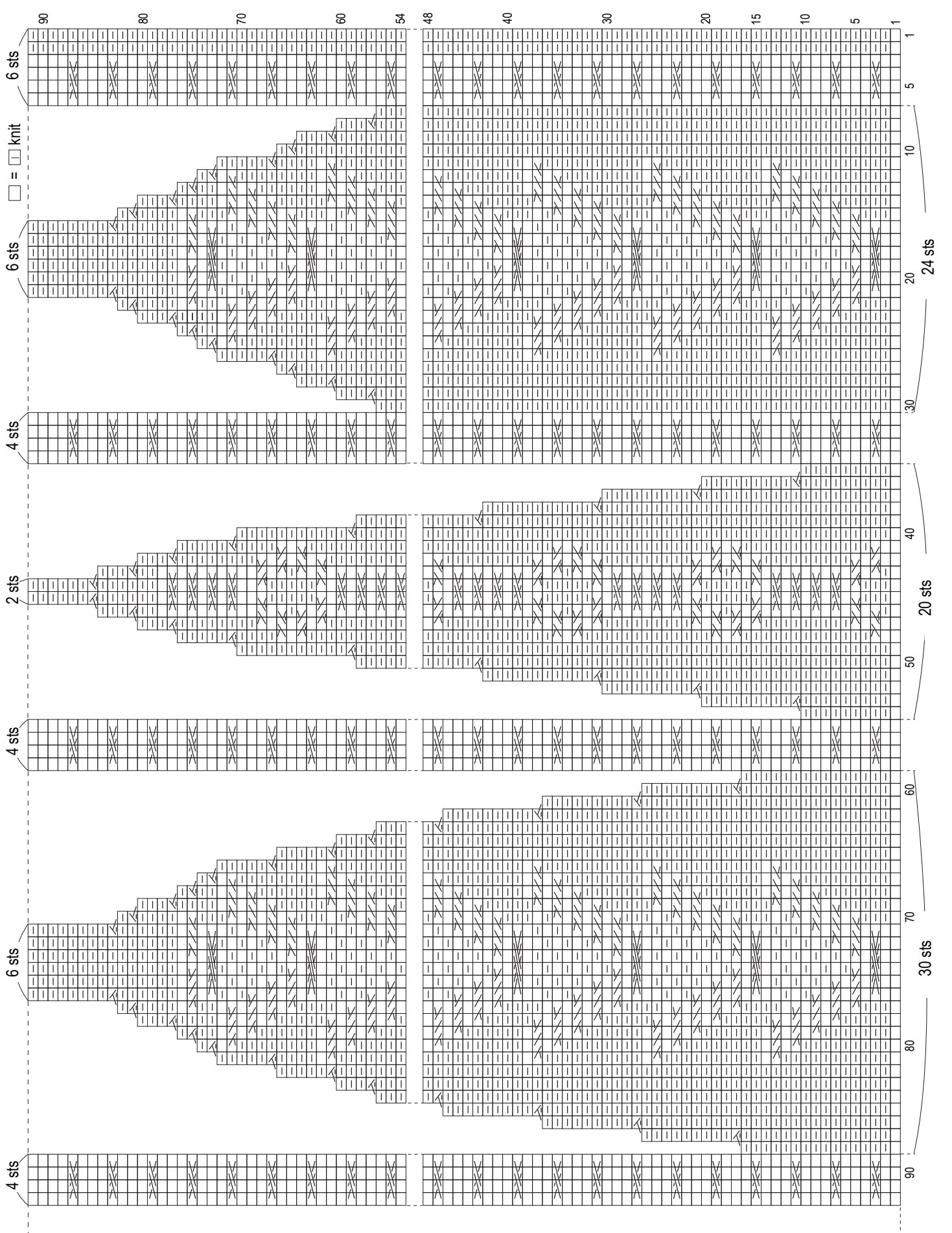
□ = □ knit



Buttonholes (7.0mm needles)

□ = □ knit





Pattern stitch A (7.0mm needles)

