

# 25-26-35 Striped Hat



## Suggested yarn:

- Pierrot Yarns Junmo Namibuto2 [100% superwash wool; 79 yds/72m per 1.41 oz./40g skein];
  - color #16 deep navy blue, 1 skein [20g]
  - color #34 dark steel gray, 1 skein [20g]
  - color #31 chestnut brown, 1 skein [20g]
  - color #32 dark brown, 1 skein [30g]

## Tools/Notions:

- 4.5mm (US 7) double-pointed knitting needles or size necessary to achieve gauge

## Finished measurements:

- head circumference 56cm/22.05"
- length 20.5cm/8.07"

## Gauge (10cm/4" square):

- stockinette stitch: 24 sts and 26 rows

*Gauge may vary according to individual knitting style. Change needle size if necessary to achieve gauge. Alternatively, rework pattern with your own gauge measurements.*

## Knitting Tips

**Hat:** Cast on with long-tail cast-on method and join into the round;. Work k2p2 in the round, then continue in stockinette stitch according to schematic. Thread yarn through remaining 10 stitches and cinch shut.

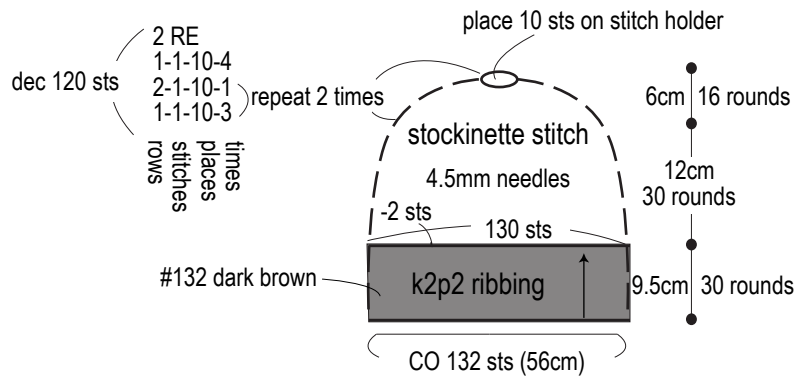
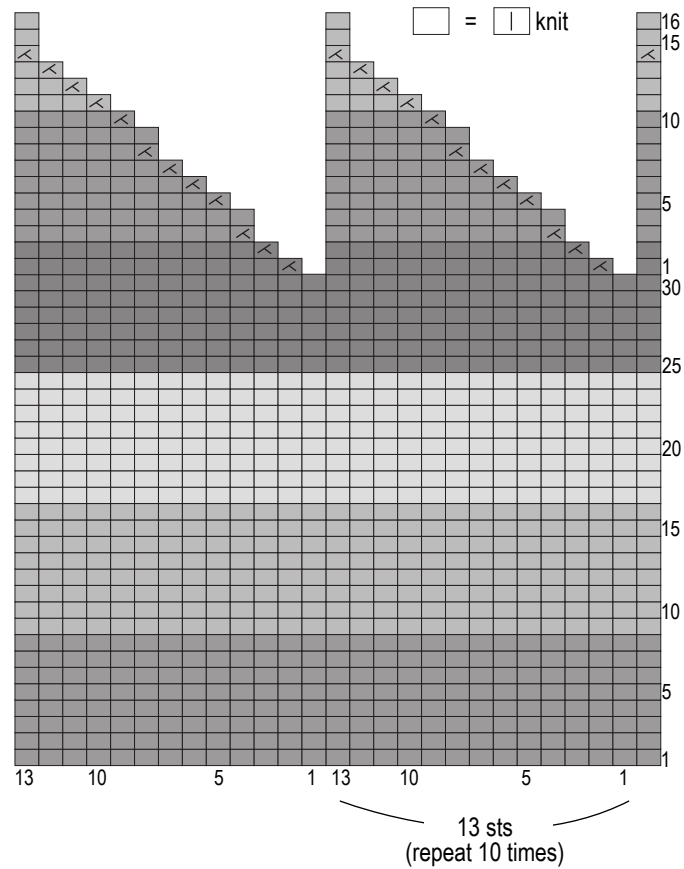
## Abbreviations:

CO = cast on

RE = row(s) even

#-#-#-# = rows-stitches-places-times (Note: *places* refers to number of locations within a single round where evenly spaced decreases will be worked. *Times* refers to the frequency of decrease rounds (not within one round).

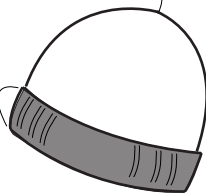
## Hat instructions



## Finishing

Thread yarn through 10 stitches and cinch shut.

Fold 7cm over.



## Color scheme

- = 16 deep navy blue
- = 34 dark steel gray
- = 31 chestnut brown
- = 32 dark brown