

amikomo-9 Yawaraka Lace Café Curtain



Suggested yarn:

- Pierrot Yarns Yawaraka Lace #18 [100% cotton; 208 yds/190m per 1.76 oz./50g skein]; color #4 undyed, 3 skeins [130g]

Tools/Notions:

- 2.0mm crochet hook or size necessary to achieve gauge

Finished measurements:

- width 69.5cm/27.36"
- length 43.5cm/17.12"

Gauge (10cm/4" square):

- each motif should measure 7.5cm/2.95" square

Gauge may vary according to individual crochet style. Change hook size if necessary to achieve gauge. Alternatively, rework pattern with your own gauge measurements.

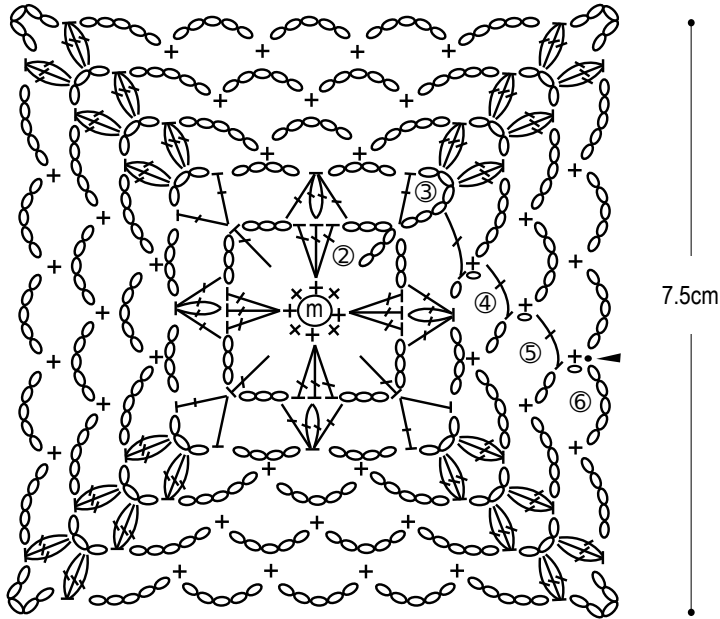
Crochet Tips

Create magic ring to begin. For round 1, ch1, 8 sc, and slip stitch to join. Starting from round 2, crochet according to schematic. Starting from second motif, join motifs together on final round using slip stitch. Crochet hem section and border in net stitch. Work loops (for curtain rod) on final round of edging.

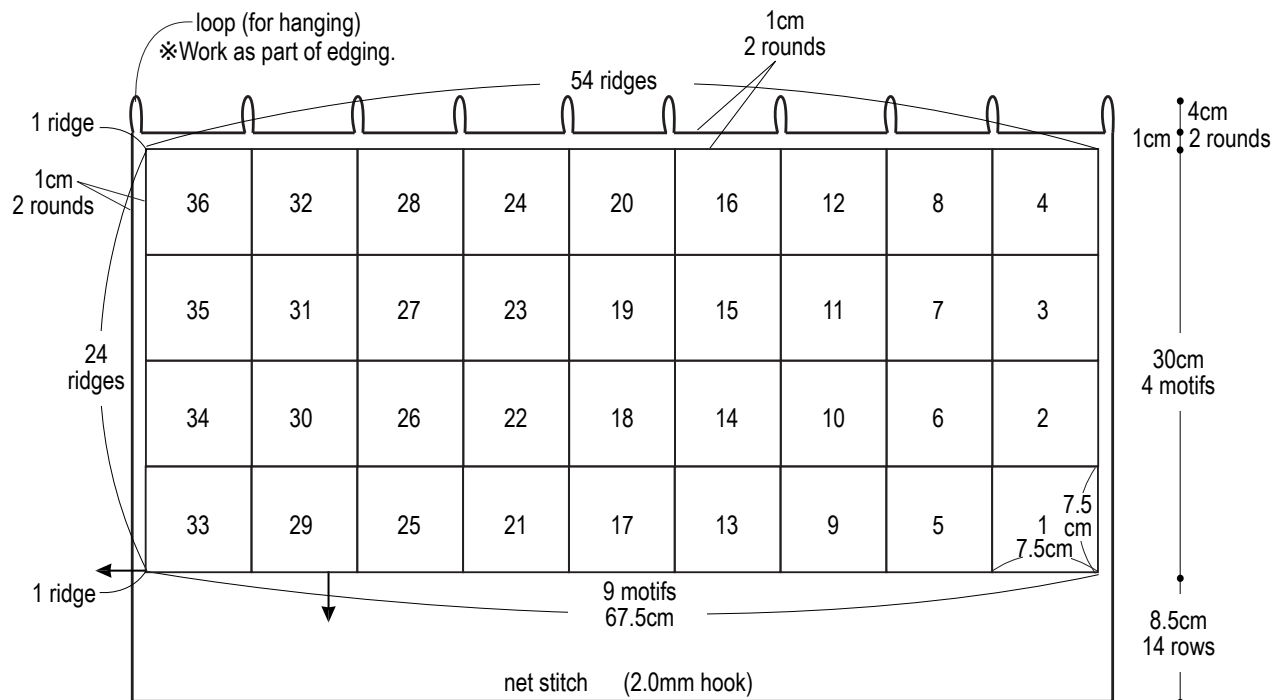
Abbreviations:

ch = chain
hdc = half double crochet (US)
hdc2tog = work 2 hdc stitches together
m = magic ring

Motif instructions (2.0mm hook)

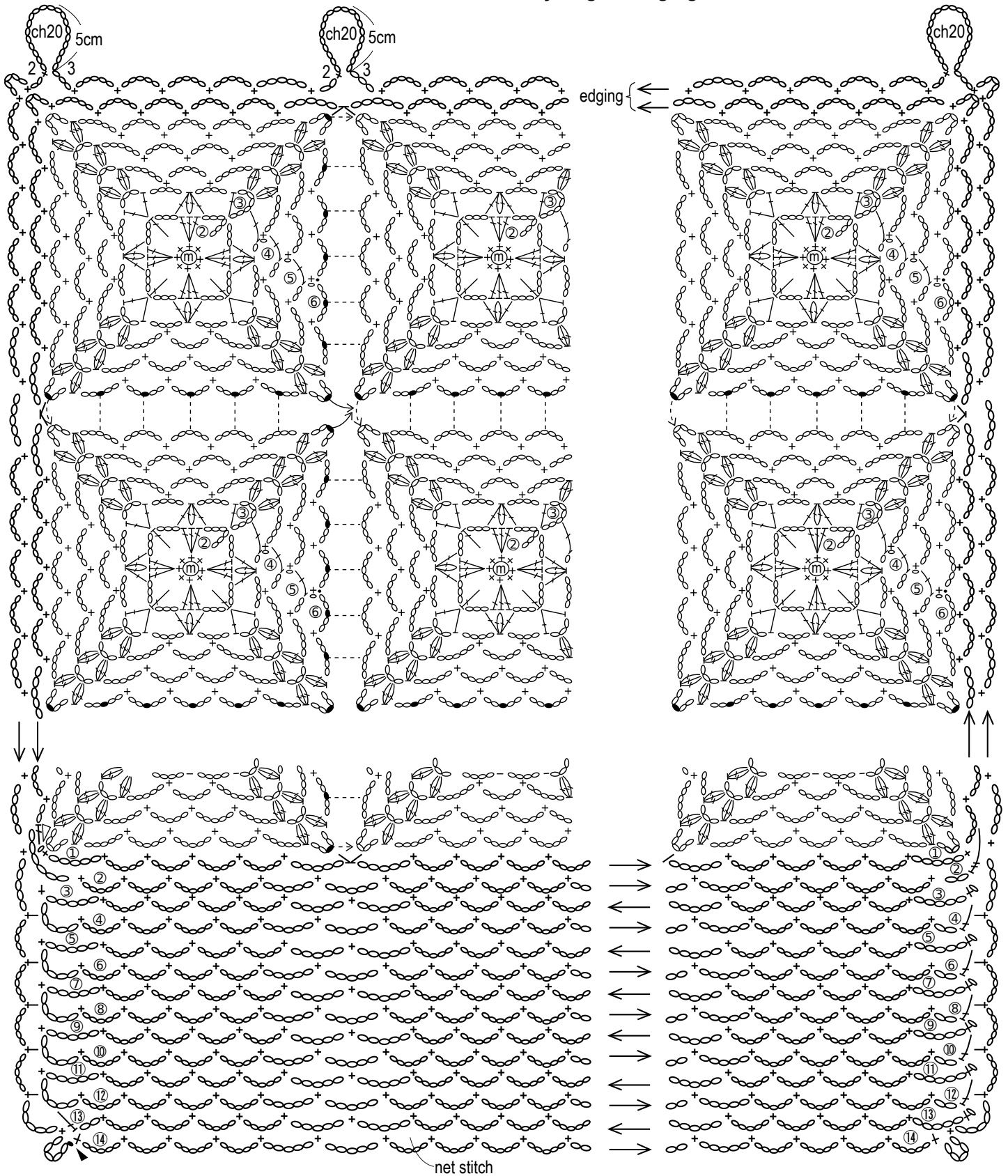


Café curtain



*Join motifs in order from 1 to 36.

Join-as-you-go & edging instructions



\nearrow = hdc2tog

\triangleleft = join yarn

\blacktriangleleft = cut yarn