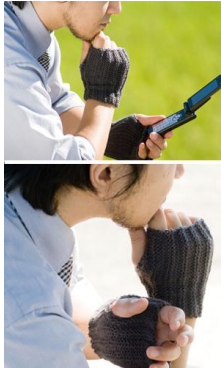


28-29-44 Knit Gloves



Suggested yarn:

- Pierrot Yarns Junmo Namibuto2 [100% superwash wool; 79 yds/72m per 1.41 oz./40g skein]; color #35 ash gray, 1 skein [32g]

Tools/Notions:

- 4.5mm (US 7) knitting needles or size necessary to achieve gauge

Finished measurements:

- wrist circumference 15cm/5.91"
- length 15cm/5.91"

Gauge (10cm/4" square):

- pattern stitch: 19 sts and 32 rows

Gauge may vary according to individual knitting style. Change needle size if necessary to achieve gauge. Alternatively, rework pattern with your own gauge measurements.

Knitting Tips

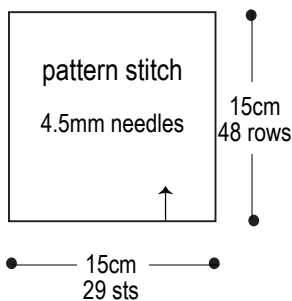
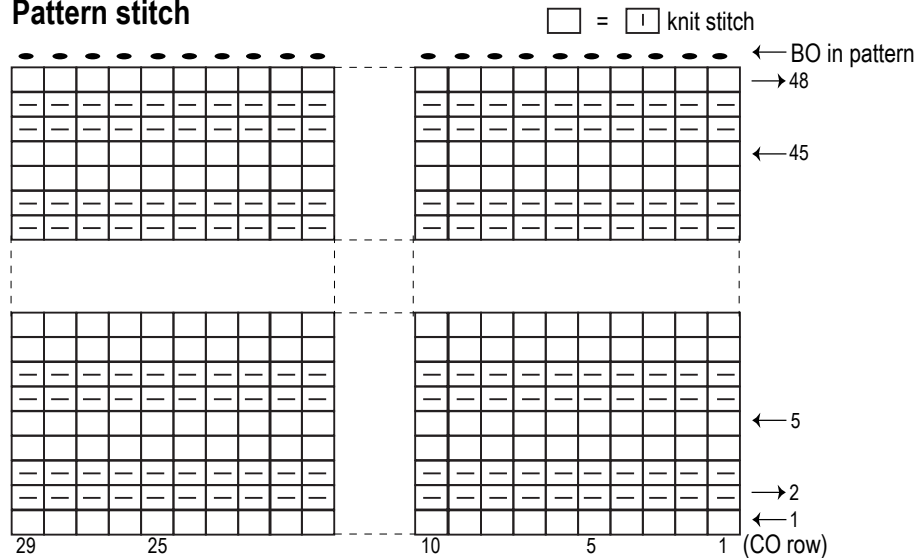
Cast on 29 stitches with long-tail cast-on method and work 48 rows in pattern stitch according to chart. Bind off in pattern. With right sides facing, seam cast-on edge and bind-off edge together with woven seam, leaving 3cm/1.18" open for thumb. Make second glove.

Abbreviations:

BO = bind off

CO = cast on

Pattern stitch



Finishing

