

# 210-211-14 Cabled Legwarmers



## Suggested yarn:

- Pierrot Yarns Yuyake no Sora [100% wool; 427 yds/390m per 3.17-3.53 oz./90-100g hank];
  - kids' size: color #106 red mix, 1 hank [60g]
  - ladies' size: color #104 light purple mix, 1 hank [90g]
- Pierrot Yarns Junmo Namibuto2 [100% superwash wool; 79 yds/72m per 1.41 oz./40g skein];
  - kids' size: color #24 grape, 1 skein [30g]
  - ladies' size: color #18 pansy, 1 skein [40g]

## Tools/Notions:

- 3.9mm (approx. US 6) and 4.5mm (US 7) circular or double-pointed knitting needles or sizes necessary to achieve gauge

## Finished measurements:

- kids' size:
  - cuff 19.5cm/7.68"
  - length 29.5cm/11.61"
- ladies' size:
  - cuff 26cm/10.24"
  - length 35cm/13.78"

## Gauge (10cm/4" square):

- stockinette stitch: 24.5 sts and 29.5 rows

*Gauge may vary according to individual knitting style. Change needle size if necessary to achieve gauge. Alternatively, rework pattern with your own gauge measurements.*

## Knitting Tips

Cast on with long-tail cast-on method and work in the round from the ankle upward. Work in k2p2 ribbing, then continue in pattern stitch (stripes), then work k2p2 ribbing again. Bind off loosely in pattern.

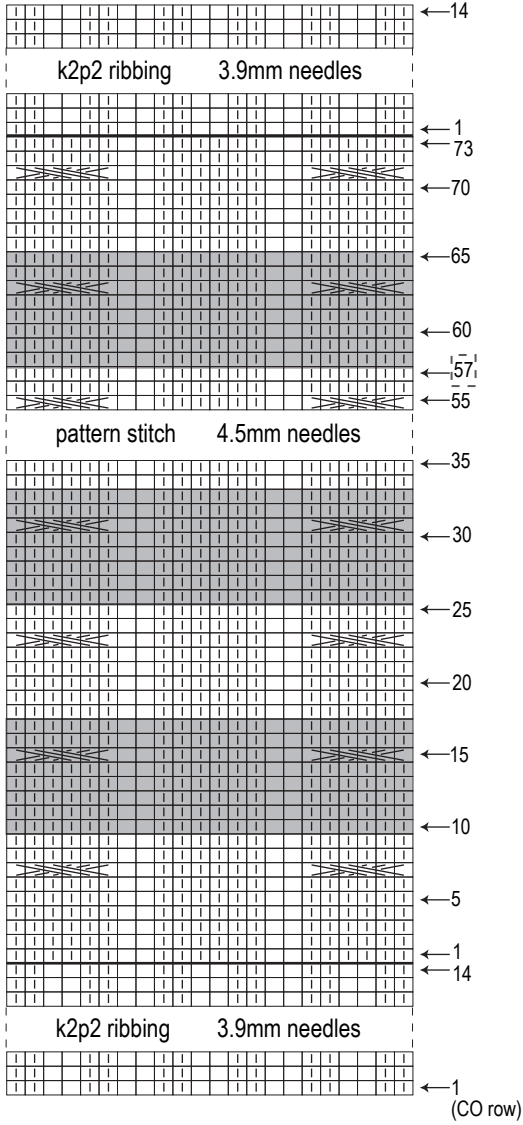
## Abbreviations:

BO = bind off

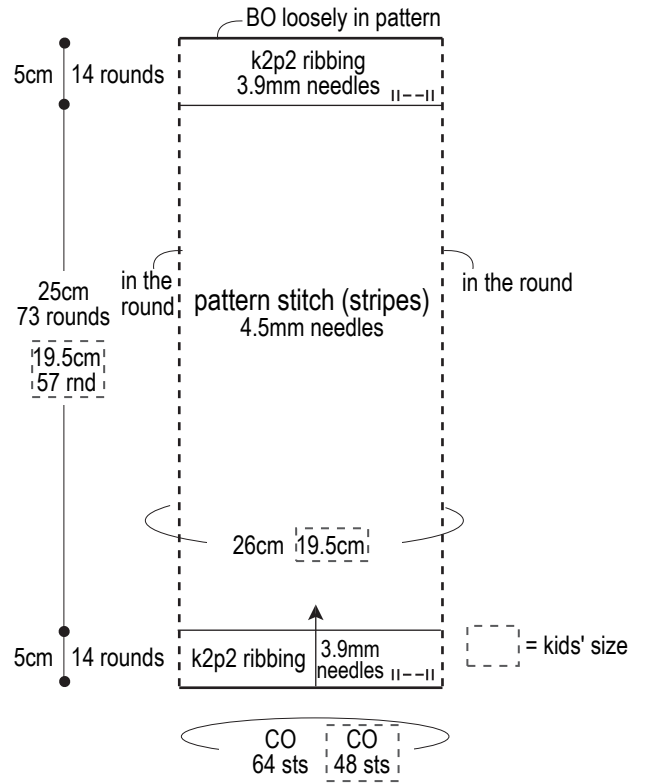
CO = cast on

# Instructions

□ = purl stitch



# Legwarmer (make 2)



# Finished items

Ladies' version



Kids' version

