

amico 8-14 Mother-daughter Tunics



Suggested yarn:

Pierrot Yarns Sawayaka Cotton [100% cotton; 416 yds/380m per 3.53 oz./100g cone];

- ladies' size:
 - color #01 white, 2 cones [140g]
 - color #09 cobalt blue, 3 cones [280g]
- girls' size:
 - color #01 white, 2 cones [105g]
 - color #09 cobalt blue, 3 cones [210g]

Tools/Notions:

- 3.6mm (approx. US 4 or 5), 3.9mm (approx. US 6), and 4.2mm (approx. US 6) knitting needles or sizes necessary to achieve gauge
- 2 buttons per tunic (15mm/0.59")

Finished measurements:

- ladies' size:
 - bust 86cm/33.89"
 - length 57cm/22.44" (excluding straps)
- girls' size:
 - bust 64cm/25.20"
 - length 50cm/19.69" (excluding straps)

Gauge (10cm/4" square):

- pattern stitch A (with 4.2mm needles): 20 sts and 29 rows
- pattern stitch B (with 3.9mm needles): 21 sts and 29 rows
- k1p1 ribbing (with 3.6mm needles): 24 sts and 32 rows

Gauge may vary according to individual knitting style. Change needle size if necessary to achieve gauge. Alternatively, rework pattern with your own gauge measurements.

Knitting Tips

Body: Cast on with long-tail cast-on; work in pattern stitch A and pattern stitch B (stripes), changing needle size where indicated. For girls' size, while working pattern stitch B (stripes), work decreases (k2tog or ssk) at edges. Decrease in first row of k1p1 ribbing. Bind off in pattern. Make 2 identical pieces for front and back.

Finishing: Seam sides with mattress stitch. Knit shoulder straps, working buttonholes as you go. Attach straps to back body with woven seam. Attach buttons to wrong side of front body.

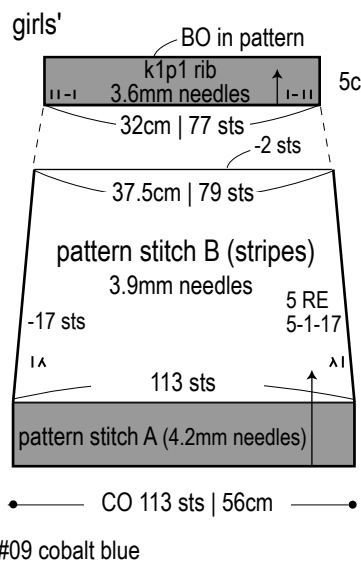
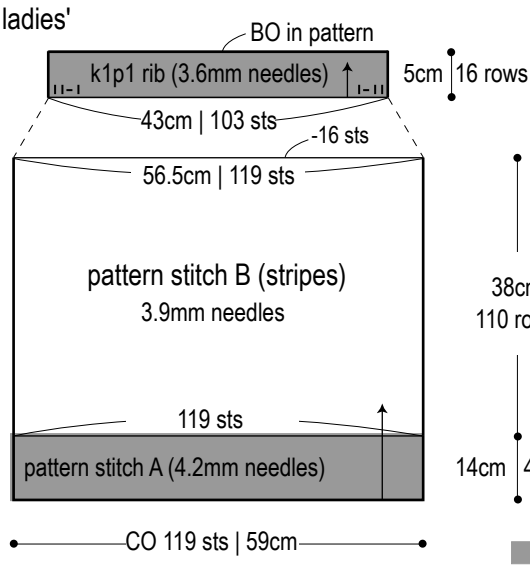
※ Straps have two sets of buttonholes so that strap length can be adjusted.

Abbreviations:

BO = bind off
CO = cast on
RE = row(s) even
RS = right side
WS = wrong side
YO = yarn over

= rows-stitches-times

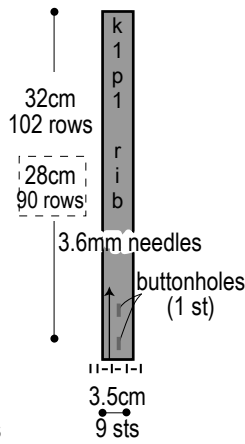
Body (make 2)



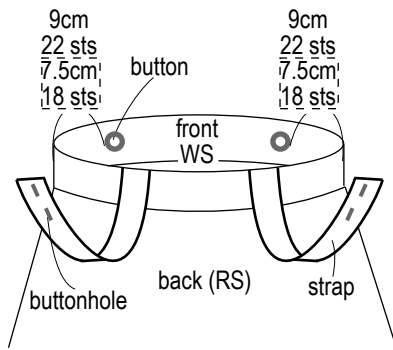
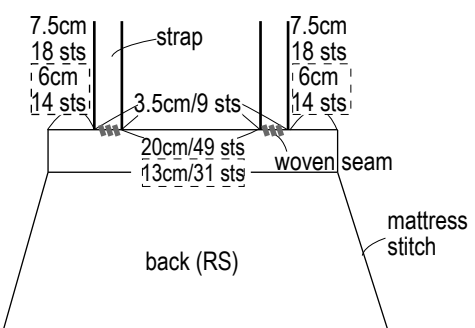
■ = #09 cobalt blue

□ = girls' size

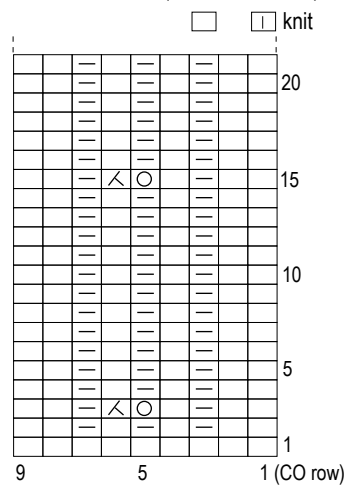
Shoulder strap (make 2)



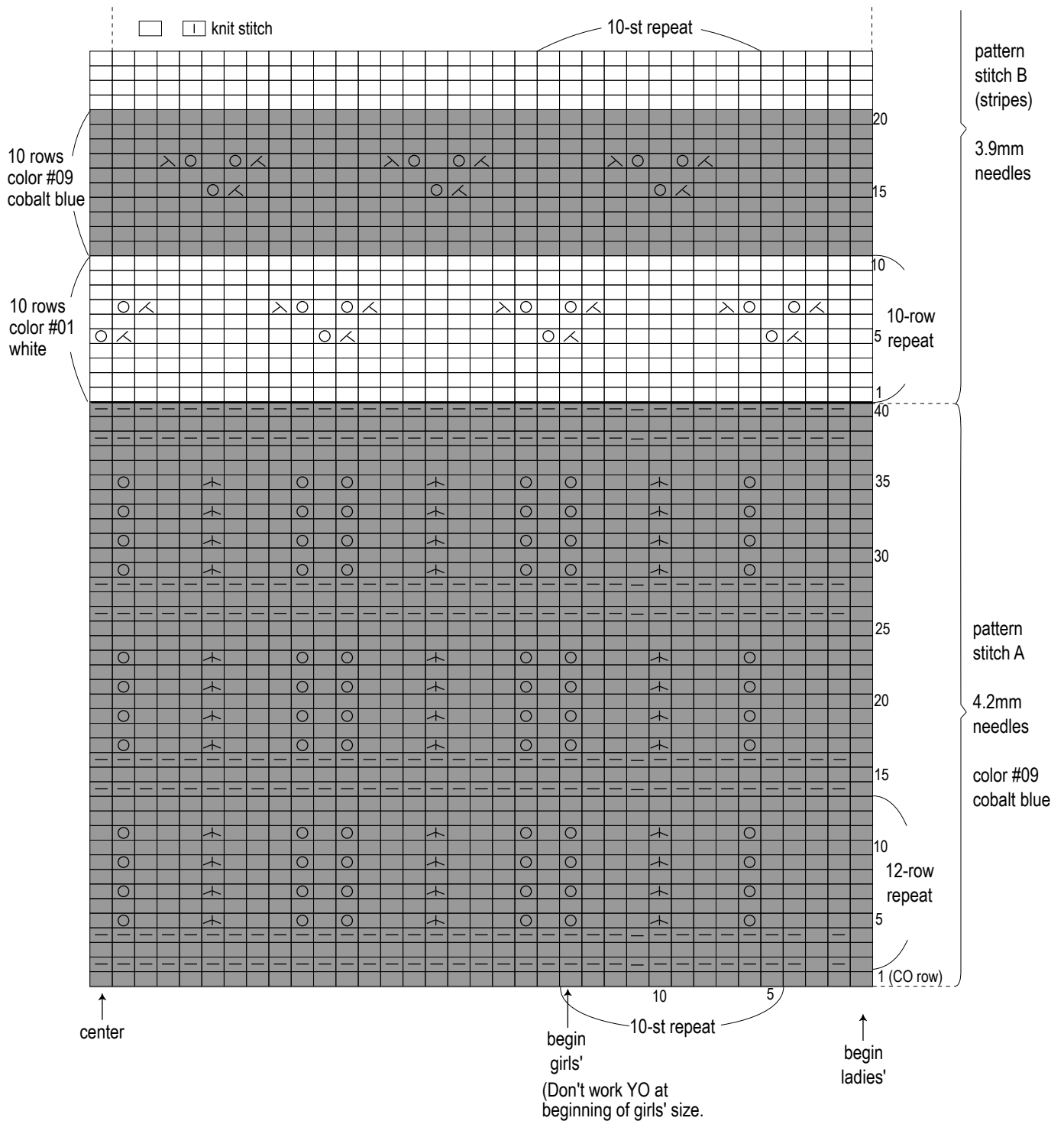
Finishing (ladies', girls')



Strap buttonholes (3.6mm needles)



Pattern stitch



Color sequence for pattern stitch B

