

24-10 Chic French Sweater

© Pierrot Yarns (Gosyo Co., Ltd.). Translation by Linda Lanz.



Materials

- Pierrot Yarns Silk Silpalon [50% silk, 50% silpalon acrylic; 273 yds/ 250m per 1.76oz/50g cone]; color #6117 pearl gray; 5 cones [250g]
- straight knitting needles: 3.0mm (US 2½) and 3.3mm (approx. US 3) or sizes necessary to achieve gauge
- circular knitting needle: 3.0mm (US 2½) or size necessary to achieve gauge

Gauge

- pattern stitch: 22 sts and 32 rows = 10cm/4" square

Finished measurements

- bust 88cm/34.65"
- center back neck-to-cuff 36.5cm/14.37"
- length 54.5cm/21.46"

Knitting Tips

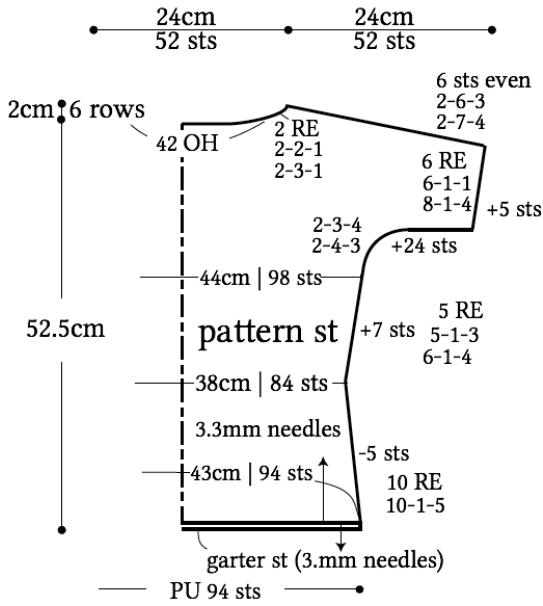
Note: entire garment worked with 2 strands of yarn held together.

Body: Cast on with crochet provisional cast-on method and begin knitting in pattern stitch. Shape sides with decreases (k2tog or ssk) worked at edges and lifted increases (worked 1 stitch in from edge). For sleeve increases, use backwards-loop cast-on. Shape shoulders with short rows. Pick up live stitches from cast-on edge at hem and work 2 rows of garter stitch. Bind off in pattern.

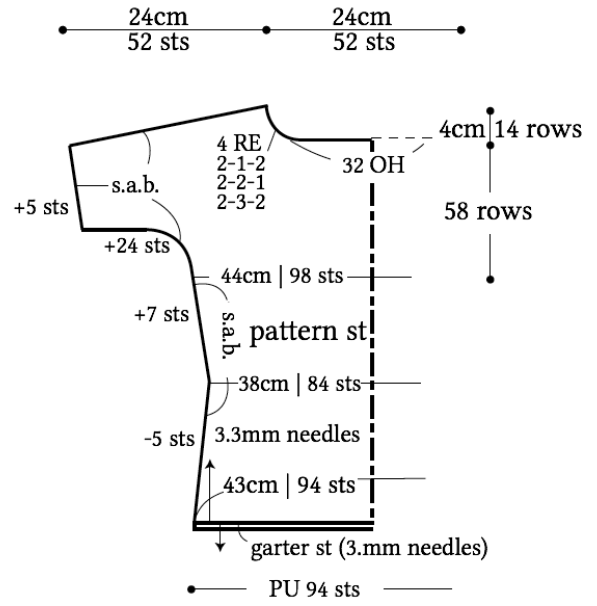
Finishing: Join shoulders with three-needle bind-off. Seam sides with mattress stitch and undersides of sleeves with Kitchener stitch. Pick up stitches evenly around neckline and cuffs and work 2 rounds of garter stitch; bind off in pattern. In order to keep neckline loose so that head will fit through, bind off collar loosely.

Abbreviations: OH = on hold (i.e., place stitches on stitch holder); PU = pick up; RE = row(s) even; s.a.b. = same as back; st = stitch

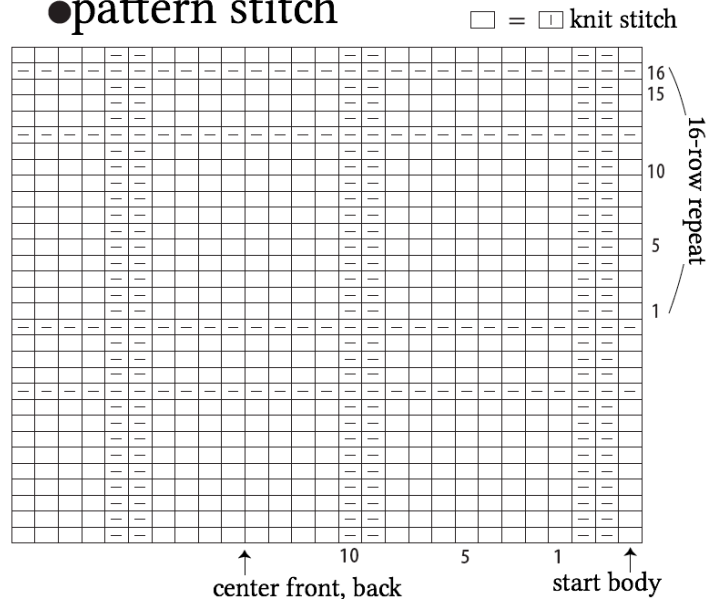
●back



●front



●pattern stitch



●collar & cuff edging (garter st)

3.0mm needles

