

99-20-13 Collared Jacket

© Pierrot Yarns (Gosyo Co., Ltd.). Translation by Linda Lanz.



Materials

- Pierrot Yarns Washable Worsted [60% wool, 40% acrylic; 77 yds/70m per 1.76 oz./50g skein]; color #224; 19 skeins [920g] – *discontinued; please choose appropriate substitute*
- 5.1mm (approx. US 8) and 5.7mm (approx. US 9) knitting needles or sizes necessary to achieve gauge
- 3.5mm (US E) crochet hook
- 4 buttons (23mm (7/8") diameter)

Gauge

- pattern stitch: 17 sts and 25 rows = 10cm/4" square

Finished measurements

- bust 101cm/39.76"
- length 67cm/26.38"
- cross back width 37cm/14.57"
- sleeve length 50cm/19.69"

Knitting Tips

Body and sleeves: Cast on with crochet provisional cast-on method and begin knitting in pattern stitch. Mark top of side slits with scrap yarn. Join shoulders with three-needle bind-off.

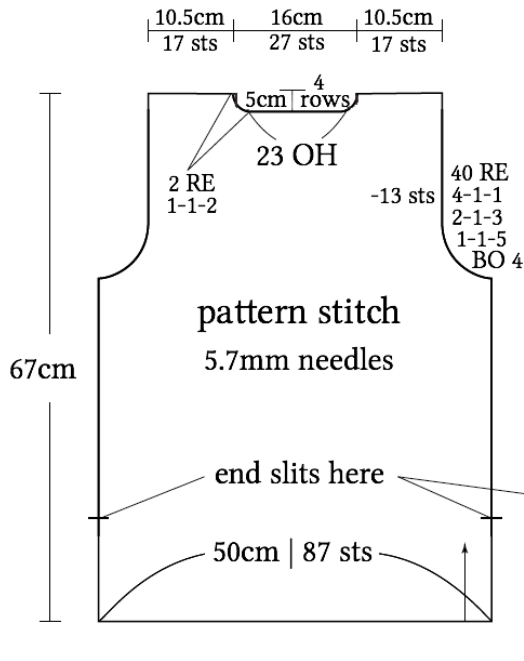
Collar: Cast on with crochet provisional cast-on method and knit, shaping with short rows. When finished, bind off with slip stitch. Work 1 row of sc edging along edge of collar, then attach collar to garment with woven seam.

Pockets: Cast on with long-tail cast-on method and knit. Work last row in k1p1 ribbing, then bind off with 1x1 tubular cast-off method. Join sides of pocket to body with mattress stitch, and join bottom with blindstitch.

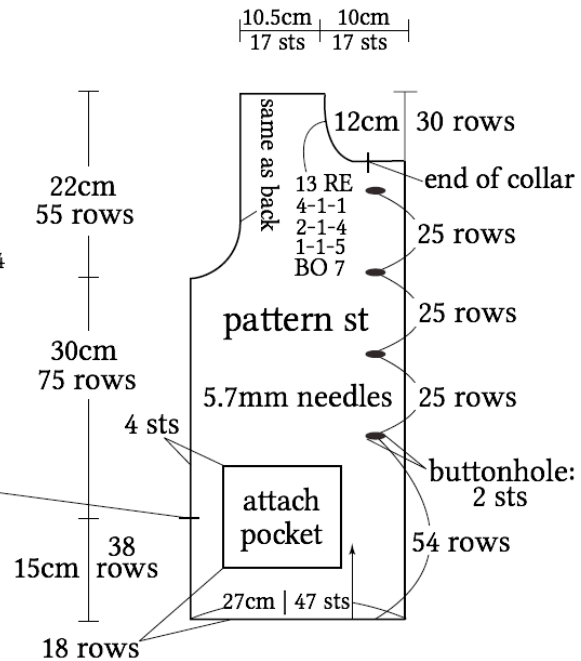
Finishing: Working 1 stitch in from edge, work slip stitch from front placket to tip of collar using 2 strands of yarn. Work slip stitch along side splits in the same way but with 1 strand of yarn. Attach sleeves to body with slip stitch seam.

Abbreviations: BO = bind off; CO = cast on; OH = on hold (i.e., place on stitch holder); RE = row(s) even; sc = single crochet (US)

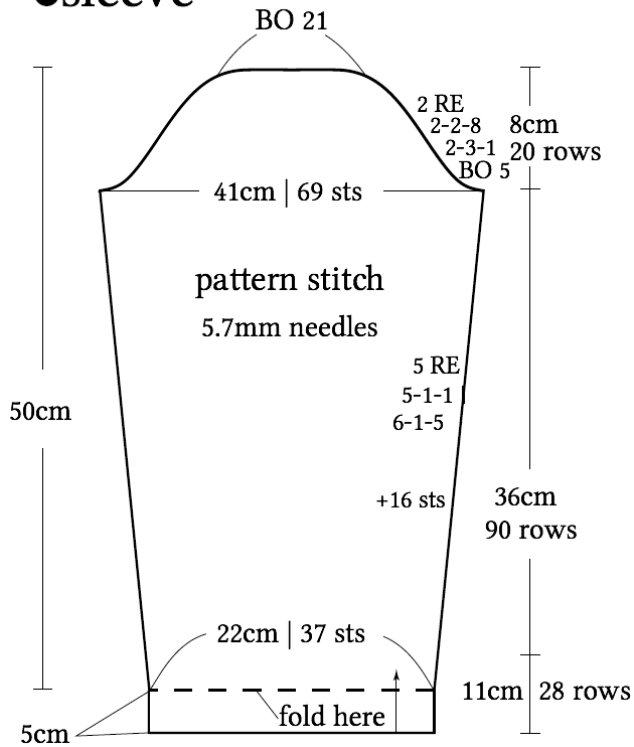
●back



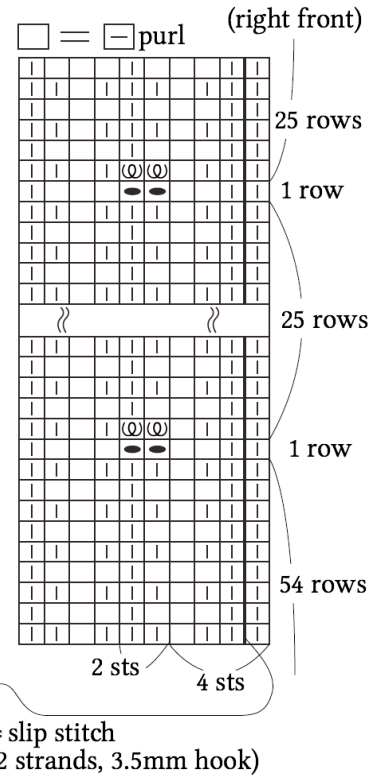
●front



●sleeve

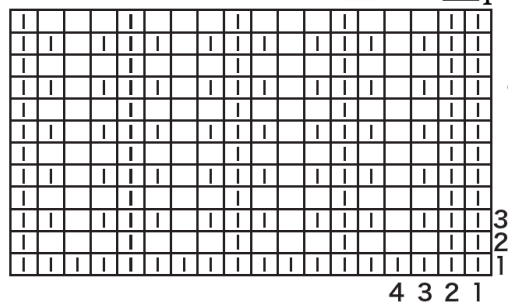


●buttonholes

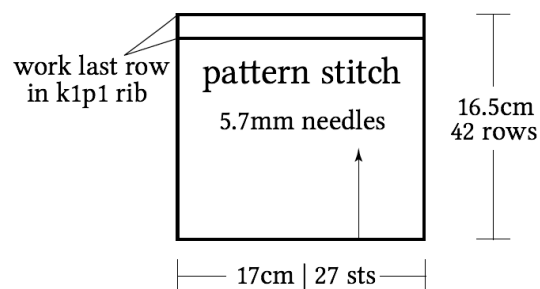


※ Work slip stitch along edges of side slits in the same way but using only 1 strand of yarn.

●pattern stitch $\square = \square_{\text{purl}}$



●pocket (make 2)



●collar (pattern stitch) 5.1 & 5.7mm needles

