

# 28-13 Lacy Cowl Collar Tank

© Pierrot Yarns (Gosyo Co., Ltd.). Translation by Linda Lanz.



## Materials

- Pierrot Yarns Fresh Cotton [100% cotton; 111 yds/101m per 1.41 oz./40g skein]; color #8 smoke biscuit; 9 skeins [360g]
- 2.5mm (approx. US B or C), 3.0mm (approx. US C or D), and 3.5mm (US E) crochet hooks or sizes necessary to achieve gauge

## Gauge

Gauge measured in a swatch 10cm/4" square.

- double crochet (US) and pattern stitch A: 24 sts and 11.5 rows

## Finished measurements

- bust 90cm/35.43"
- cross back width 37cm/14.57"
- length 54.5cm/21.46"

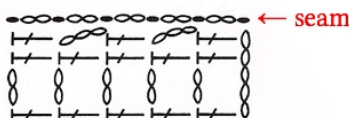
## Crochet Tips

**Body:** Chain to cast on and, working first row into bottom loops of chain, work in pattern stitch A according to schematics. Continue, working in double crochet (US). Refer to schematics for shaping sides, armscyes, and neckline. Join shoulders with woven seam; join sides with slip/chain seam (see below). Work edging along hem in the round.

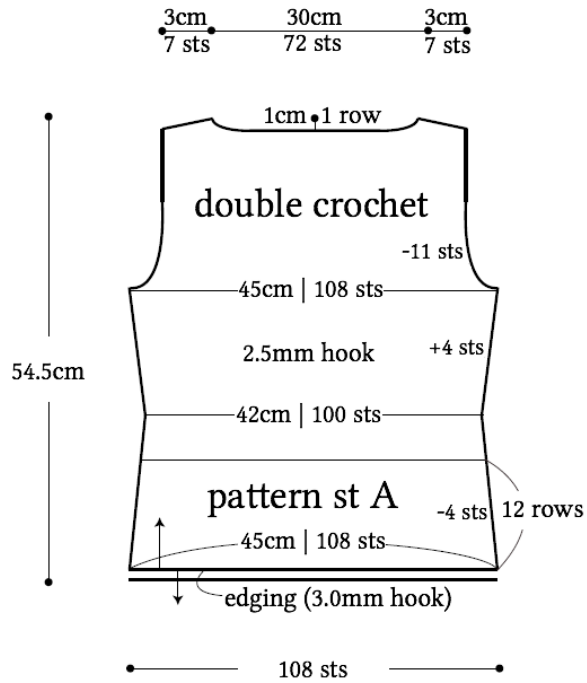
**Finishing:** With right side facing, work 1 round of single crochet (US), then starting from the next round, work 1 more round of single crochet with wrong side facing. Continue working collar in pattern stitch B, adjusting gauge as indicated. Work 1 round of single crochet around armscyes.

**Abbreviations:** dc = double crochet (US); H = hook; R = row(s)/round(s); sc = single crochet (US)

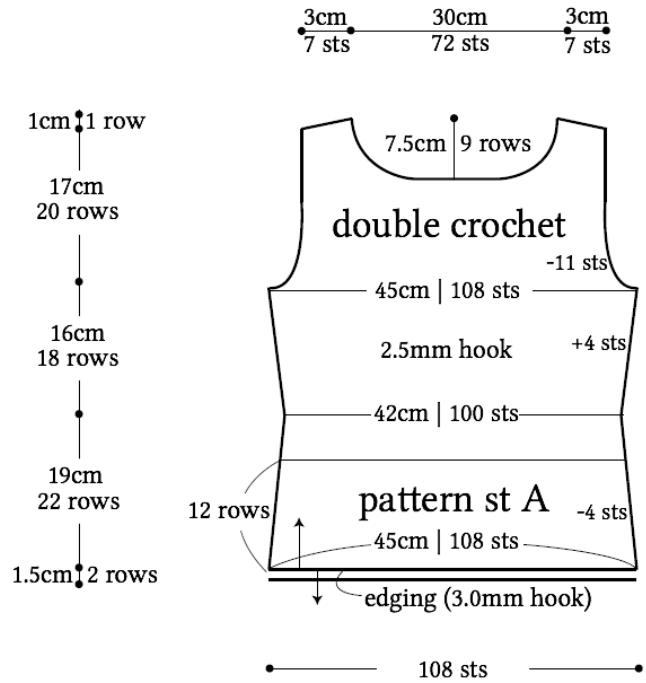
**Slip/chain seam:** essentially a slip stitch seam with chain stitches interspersed between slip stitches. Sl st through one stitch in each layer. \*ch2, sl st in top of next row\*, continue from \* to \* until end. (Note: use ch2 only for dc. Use ch1 for hdc, ch2 for dc, ch3 for tr, and so on.)



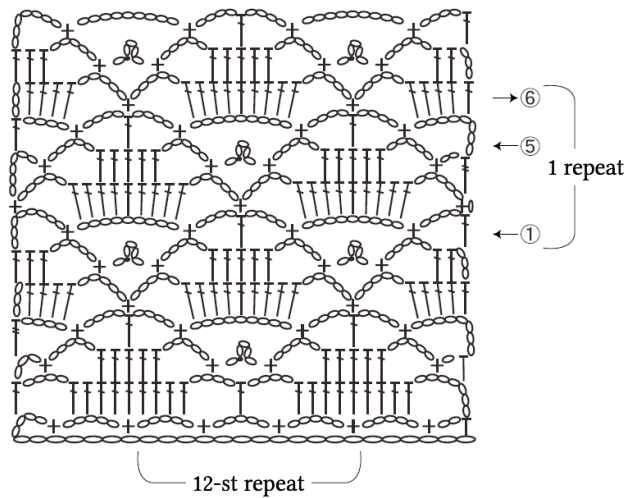
## ●back



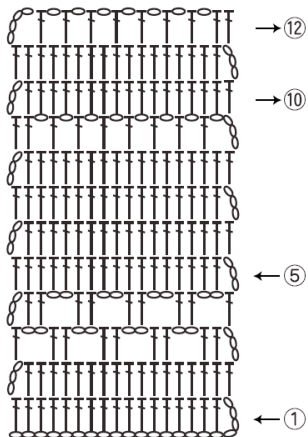
## ●front



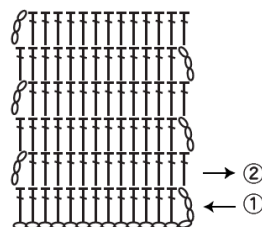
## ●pattern stitch B



## ●pattern stitch A



## ●double crochet



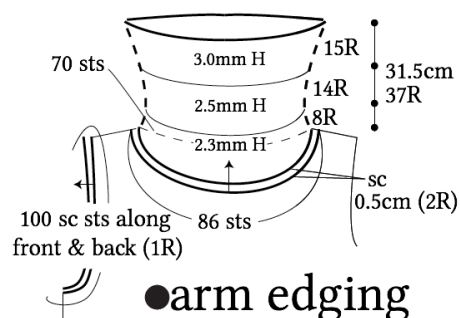
## ●edging (hem)



## ●collar

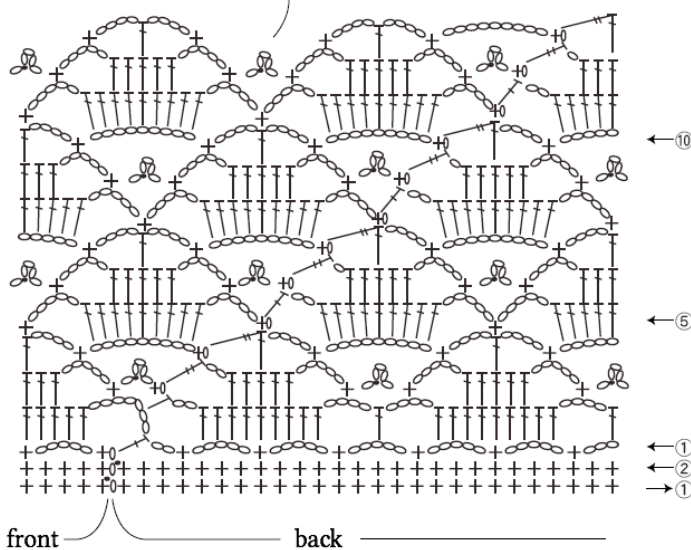
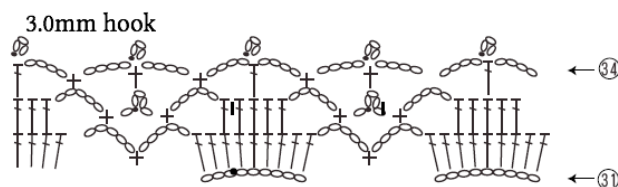
pattern stitch B

hook size varies



## ●arm edging

2.3mm hook



※ Crochet collar with wrong side of garment facing (except for first round—see note below).

※ Work first round of sc in collar with right side of garment facing.

