

Short Bolero

© Pierrot Yarns (Gosyo Co., Ltd.). Translation by Linda Lanz.



Materials

- Keito-Zakka Stores Sunny [60% wool, 40% acrylic; 87 yds/80m per 1.41 oz./40g skein]; color #3 cinnamon mix; 5 skeins [180g]
- 3.6mm (approx. US 4 or 5) double-pointed knitting needles or size necessary to achieve gauge
- 2.5mm (approx. US B or C) crochet hook or size necessary to achieve gauge
- 1 button (21mm/0.83" diameter)

Gauge

Gauge is measured in a swatch 10cm/4" square.

- stockinette stitch and pattern stitch: 18 sts and 28 rows

Finished measurements

- bust 88cm/34.65"
- length 41cm/16.14"

Knitting Tips

Body: Cast on with crochet provisional cast-on method and work body in pattern stitch.

Yoke: Pick up stitches from body and work in stockinette with evenly spaced decreases. Cast on stitches for sleeves by working crochet chain, then picking up knit stitches through bottom loops of chain. When finished, bind off in pattern.

Finishing: Seam sides with mattress stitch. Work buttonholes in left front. Crochet edging along cuffs and hem.

Abbreviations: BO = bind off; CO = cast on; OH = on hold (use stitch holder); RE = row(s) even

●edging A (hem)

2.5mm hook

```

x°x°x°-----x°x°x°x°x0 ←3
0x°x°x°x°-----x°x°x°x°x° →2
x°x°x°x°-----x°x°x°x°x0 ←1
  
```

●edging B (arms)

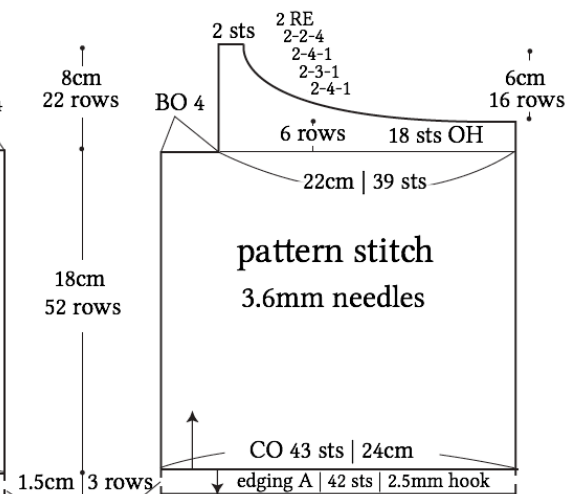
2.5mm hook

```

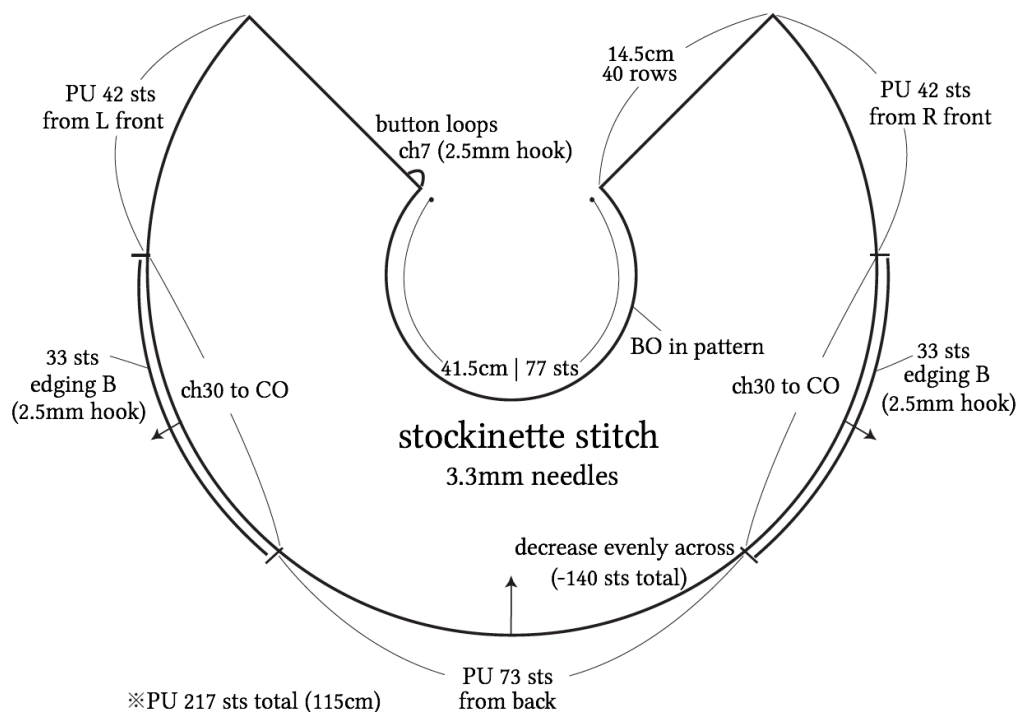
x°-----x°x°x°x°x0 ←1
  
```

Diagram of a shawl pattern stitch. The shawl is rectangular with a wide border. The top border is 2 sts wide. The main body is 56 sts wide. The bottom border is 86 sts wide. The shawl is made with 3.6mm needles. The pattern stitch is a 2-rep, 2-3-3 cable. The shawl is made with 2 RE 2-3-3 cables. The shawl is made with 2 sts wide borders. The shawl is made with 2 sts wide borders. The shawl is made with 2 sts wide borders.

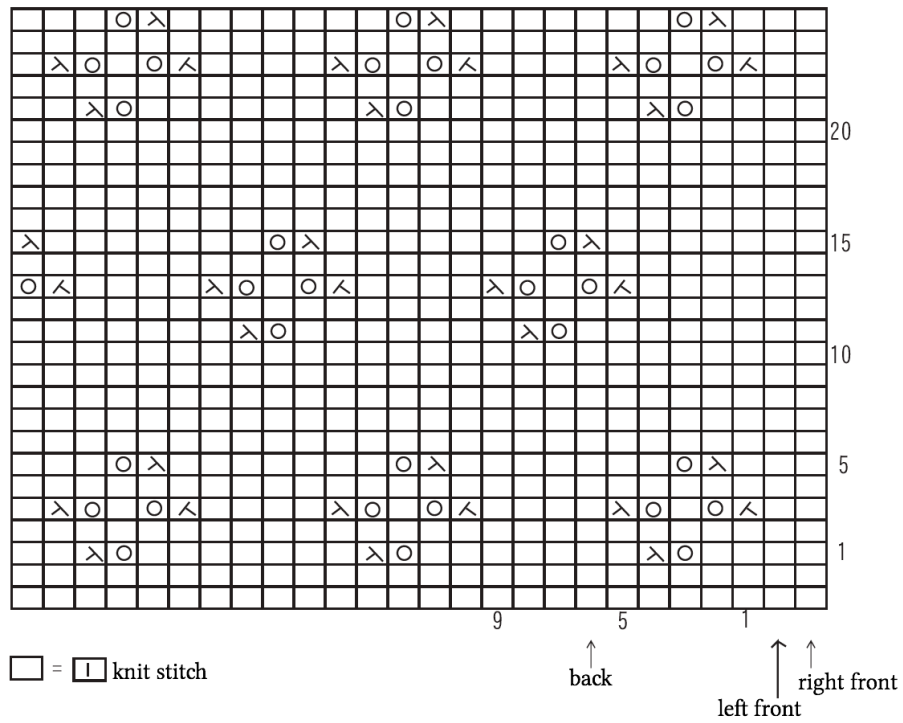
※Reverse shaping for left front.



●yoke



● pattern stitch



● stockinette & evenly spaced decreases

