

# 210-211-15 Stranded Legwarmers

© Pierrot Yarns (Gosyo Co., Ltd.). Translation by Linda Lanz.



## Materials

- Pierrot Yarns Junmo Namibuto2 [100% superwash wool; 79 yds/72m per 1.41 oz./40g skein];
  - **ladies' size:**
    - color #16 deep navy blue; 2 skeins [75g]
    - color #23 rose-red 1 skein [25g]
    - color #24 grape; 1 skein [10g]
  - **children's size:**
    - color #32 dark brown; 2 skeins [45g]
    - color #8 moss; 1 skein [10g]
    - color #6 gold brown; 1 skein [5g]
    - color #24 grape; 1 skein [5g]
- 3.6mm (approx. US 4 or 6) and 3.9mm (approx. US 6) circular knitting needles (23cm/9" long) or sizes necessary to achieve gauge; double-pointed needles may also be used
- tapestry needle

## Gauge

- stranded pattern stitch: 19 sts and 22 rows = 10cm/4" square

## Finished measurements

- children's size:
  - leg circumference 21cm/8.27"
  - length 25cm/9.84"
- ladies' size:
  - leg circumference 31cm/12.20"
  - length 28cm/11.02"

## Knitting Tips

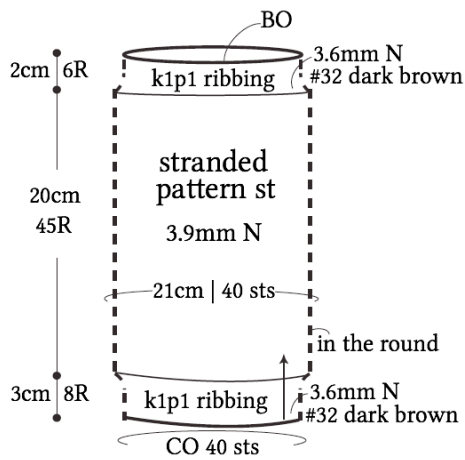
**Legwarmers:** Cast on with long-tail cast-on method and work in k1p1 ribbing, then stranded pattern stitch, then k1p1 ribbing. When finished, bind off in pattern.

※ Knit ladies' legwarmers in the same way.

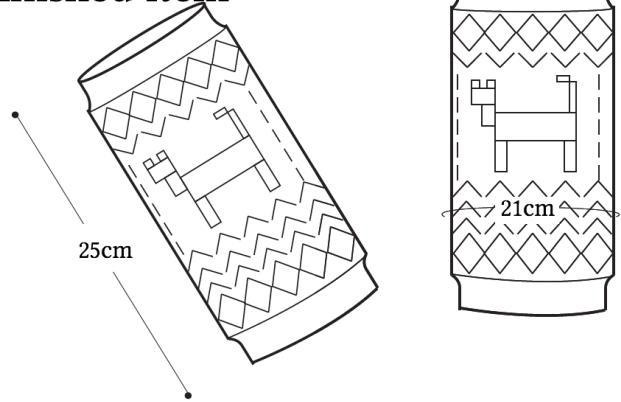
**Abbreviations:** BO = bind off; CO = cast on; N = needles; R = round(s)

# Children's version

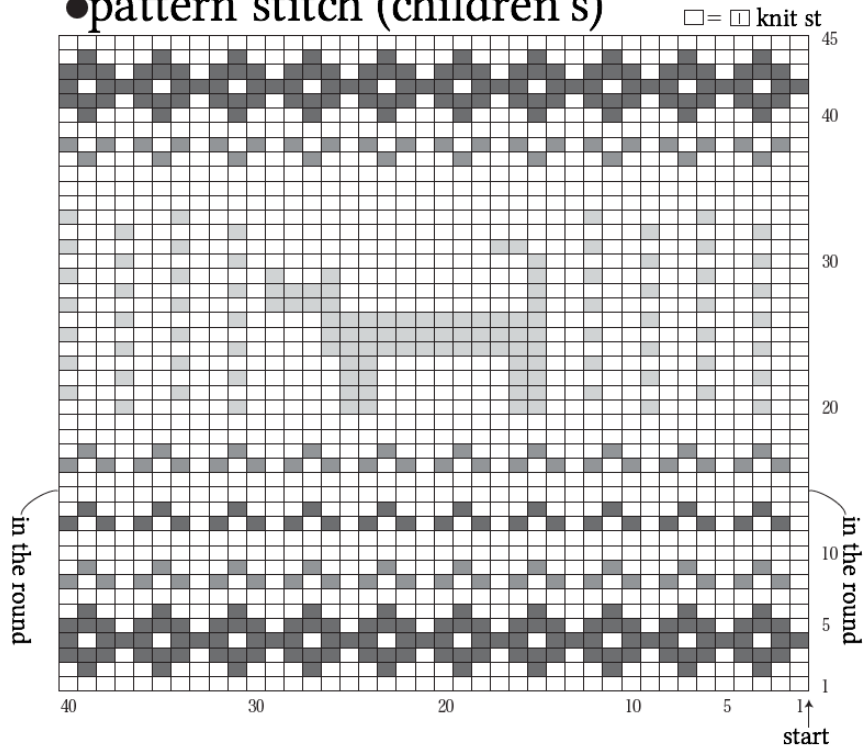
## ● legwarmers (make 2)



## ● finished item



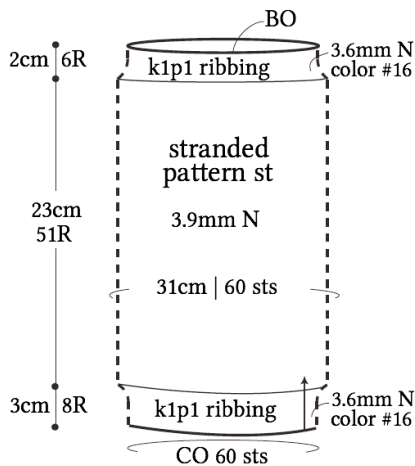
## ● pattern stitch (children's)



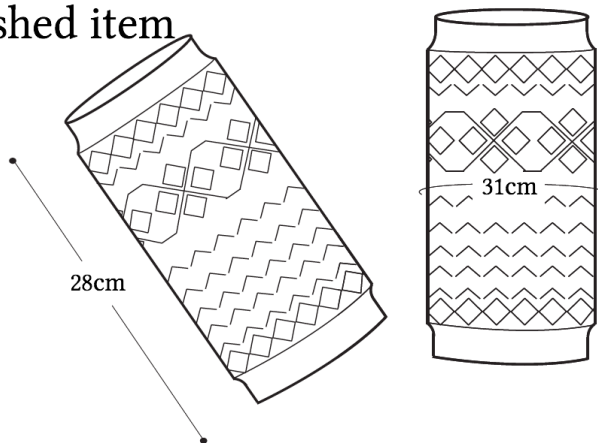
- = #32 dark brown
- = #8 moss
- = #6 gold brown
- = #24 grape

# Ladies' version

## ●legwarmers (make 2)



## ●finished item



## ●pattern stitch (ladies')

