

# 210-211-11-2 Convertible Sleepsack

© Pierrot Yarns (Gosyo Co., Ltd.). Translation by Linda Lanz.



## Materials

- Pierrot Yarns Angel [100% superwash merino wool; 107 yds/98m per 1.41 oz./40g skein]; color #4 orange cream; 10 skeins [390g]
- 3.9mm (approx. US 6) and 4.5m (US 7) straight knitting needles or sizes necessary to achieve gauge
- 3.9mm (approx. US 6) double-pointed knitting needles or size necessary to achieve gauge
- 3.0mm (approx. US C or D) crochet hook or size necessary to achieve gauge
- 4 buttons (15mm / approx. 5/8")
- tapestry needle

## Gauge

Gauge is measured in a swatch 10cm/4" square.

- stockinette stitch: 16 sts and 24 rows
- pattern stitch: 18.5 sts and 24 rows
- garter stitch: 18 sts and 29 rows

## Finished measurements

- chest 75cm/29.53"
- cross back width 30cm/11.81"
- length 54.5cm/21.46"
- sleeve length 23cm/9.06"

## Knitting Tips

※ Entire garment worked with two strands of yarn held together.

**Front and back body:** Cast on with long-tail cast-on method and work 16 rows of garter stitch. Continue working in pattern stitch and stockinette stitch.

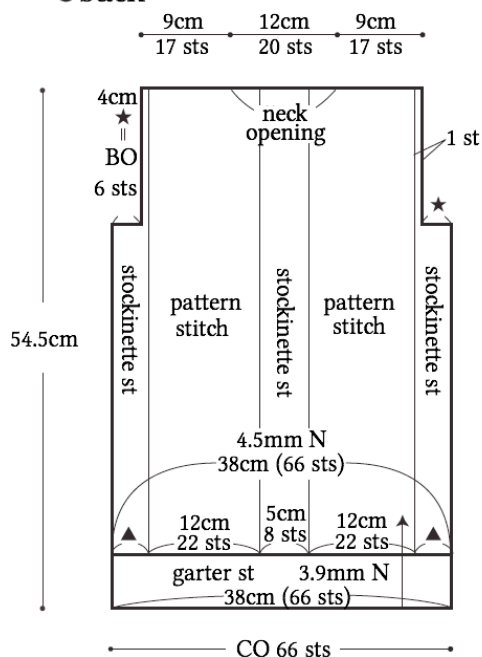
**Sleeves:** Begin knitting as for body. Work sleeve increases using fully-fashioned lifted increases (worked 1 stitch in from the edge).

**Hood:** Pick up stitches from body and knit. Seam stitches on hold using three-needle bind-off.

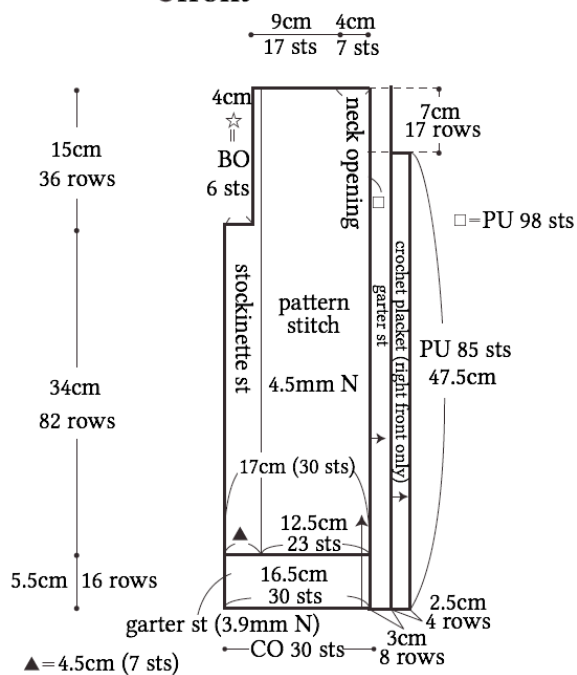
**Finishing:** Picking up stitches along from front body and hood, work front plackets in garter stitch. Bind off in pattern. (Work buttonholes in left front placket.) At right front only, work crochet placket. Join sleeves to body with slip stitch. Seam sides where marked (sleeve undersides and sides) using mattress stitch. Attach buttons to right front.

**Abbreviations:** BO = bind off; CO = cast on; DPNs = double-pointed needles; N = needles; OH = on hold; PU = pick up; RE = row(s) even; st st = stockinette stitch

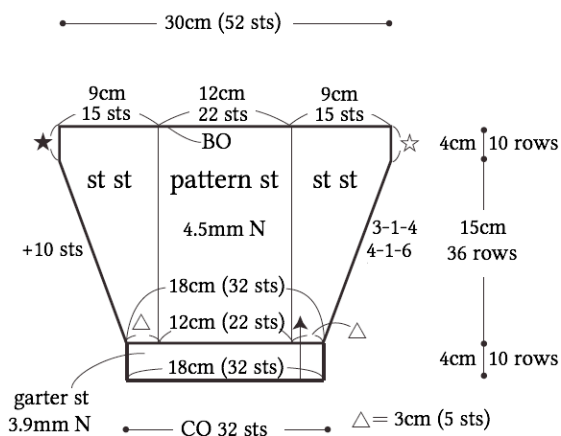
## ●back



## ●front

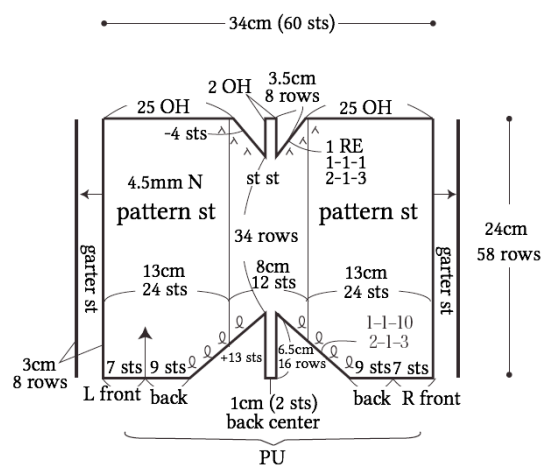


## ●sleeve



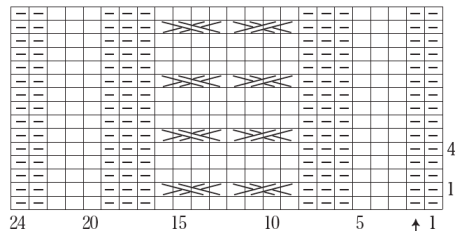
body ☆ & sleeve ☆ } align & seam with mattress stitch  
body ★ & sleeve ★ }

## ●hood



4.5mm needles

$\square = \square \text{knit st}$



(3.0mm hook)



- hood, plackets, buttonholes

