

27-28-2 Cashmere Merino Convertible Shawl

© Pierrot Yarns (Gosyo Co., Ltd.). Translation by Linda Lanz.



Materials

- Pierrot Yarns Cashmere Merino [30% cashmere, 70% superwash merino wool; 102 yds/93m per 0.88 oz./25g skein]; color #10 black; 11 skeins [270g]
- 2.5mm (approx. US B or C) crochet hook or size necessary to achieve gauge
- 10 buttons (15mm / approx. 5/8")

Gauge

Gauge measured in a swatch 10cm/4" square.

- pattern stitch A: 23.5 sts and 13 rows
- pattern stitch B: 24 sts and 12.5 rows

Finished measurements

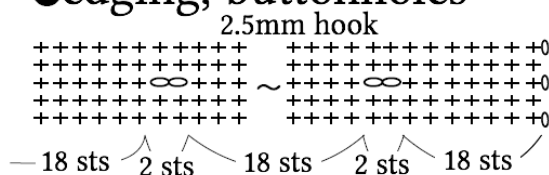
- width 46cm/18.11"
- length 140cm/55.12"

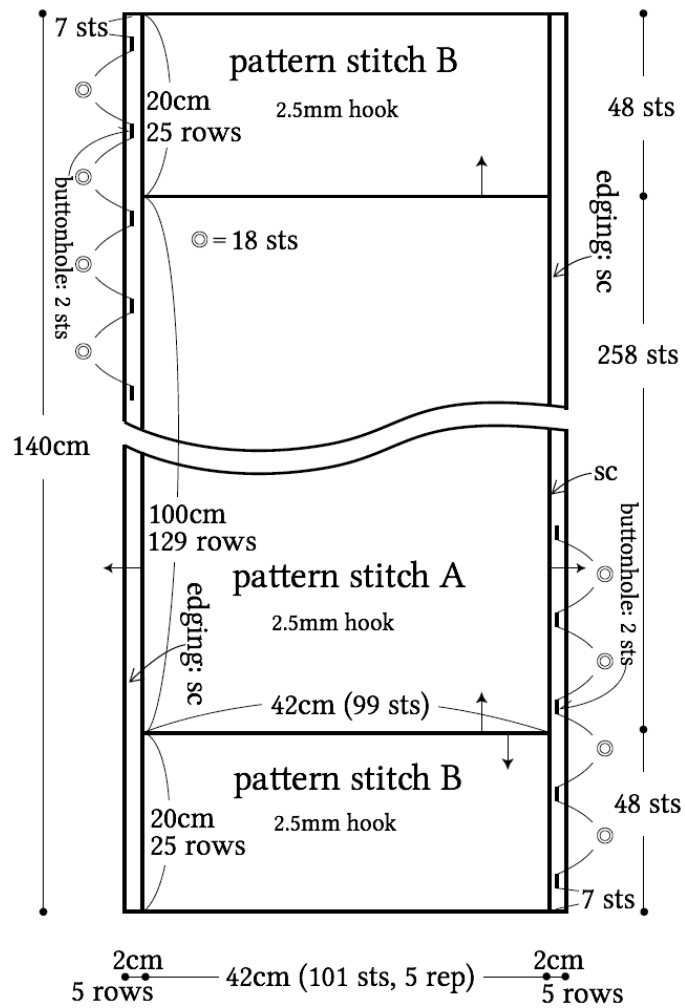
Crochet Tips

Chain to cast on and work first row into bottom loops of chain. Crochet in pattern stitch A followed by pattern stitch B. Working into cast-on row, work pattern stitch B. Work single crochet (US) edging along both long edges of the shawl, working buttonholes in edging as indicated.

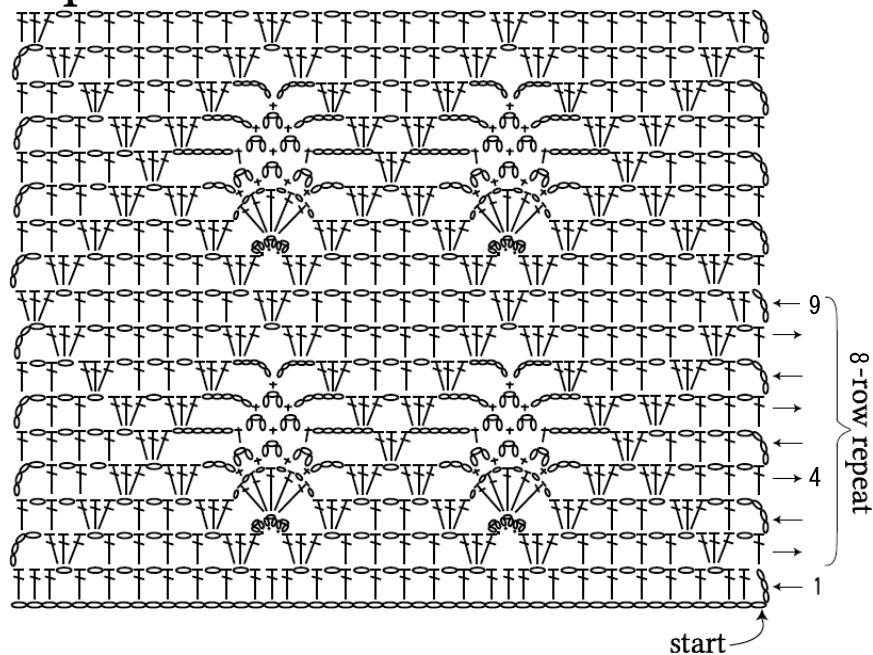
Abbreviations: hdc = half double crochet (US); rep = repeat(s); sc = single crochet (US)

●edging, buttonholes

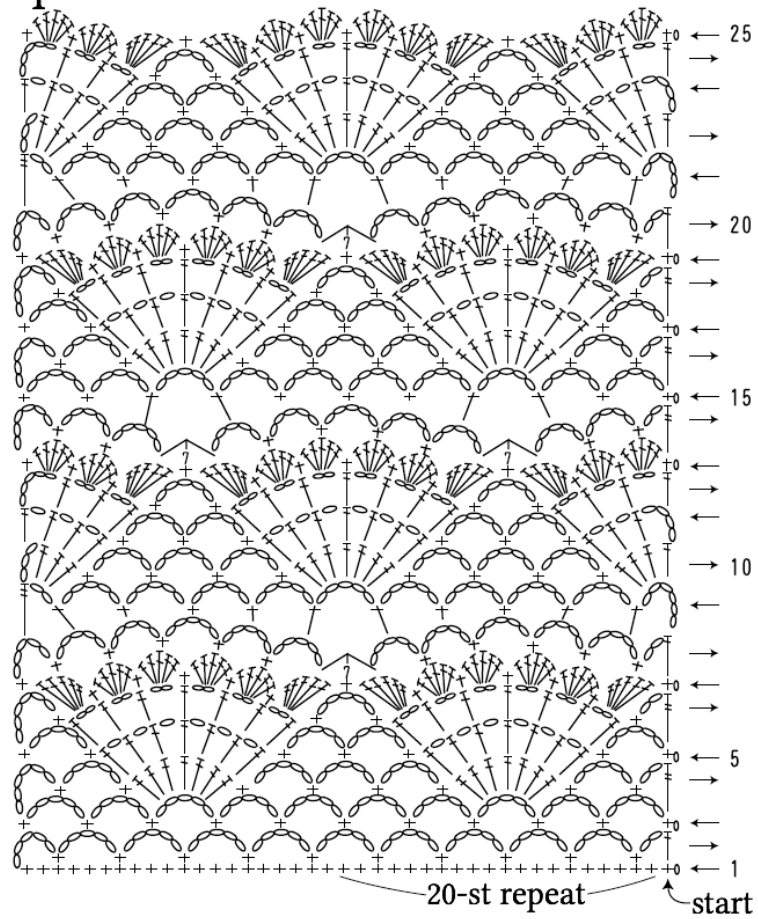




● pattern stitch A



●pattern stitch B



$$\begin{array}{c} \diagup \\ \diagdown \end{array} + \begin{array}{c} \diagup \\ \diagdown \end{array} = \begin{array}{c} \diagup \\ + \\ \diagdown \end{array} = \text{sc2tog (with 5-st gap)}$$