

210-12 Tunic Vest & Scarf

© Pierrot Yarns (Gosyo Co., Ltd.). Translation by Linda Lanz.



- Pierrot Yarns Wagokoro [100% cotton; 306 yds/265m per 3.53 oz./100g cone]; color #07 coral pink; 3 cones [300g]
- 3.0mm (US 2½), 3.3 (approx. US 3) and 3.6mm (approx. US 4 or 5) knitting needles or sizes necessary to achieve gauge
- 2.3mm (approx. US B) crochet hook or size necessary to achieve gauge
- darning needle

Gauge

- pattern stitch A and B (with 3.6mm needles): 23 sts and 29 rows = 10cm/4" square

Finished measurements

- bust 91cm/35.83"
- cross back width 36.5cm/14.37"
- tunic length 71.5cm/28.15"
- scarf width 11.5cm/4.53"
- scarf length 167cm/65.75"

Knitting Tips

Body and armholes: Cast on using long-tail cast on method and knit in pattern stitch A. Continue on to pattern stitch B according to schematics, changing needle size as indicated in order to change gauge.

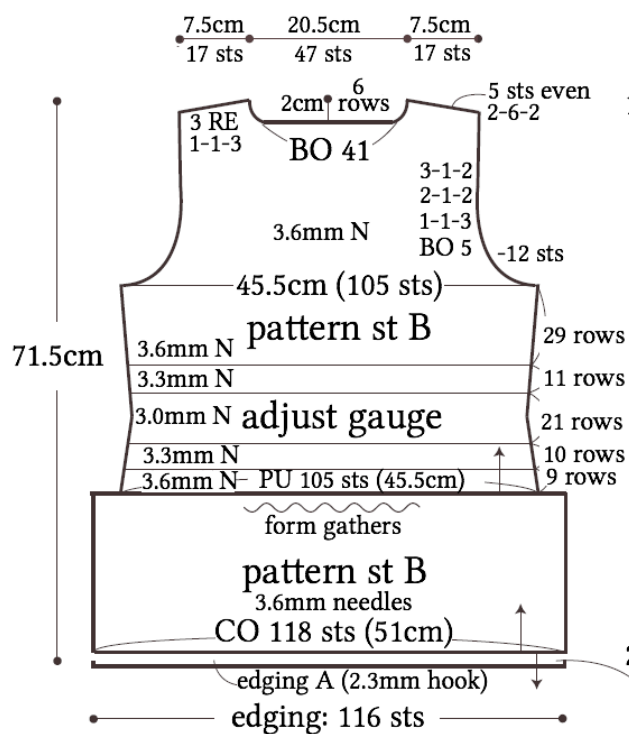
Finishing: Join shoulders with three-needle bind-off. Join sides with mattress stitch. Crochet edging A in the round at hem. Crochet edging B around armholes and neckline.

Scarf: Cast on using long-tail cast on method and knit in pattern stitch B. Work edging A' in rows at each end of scarf.

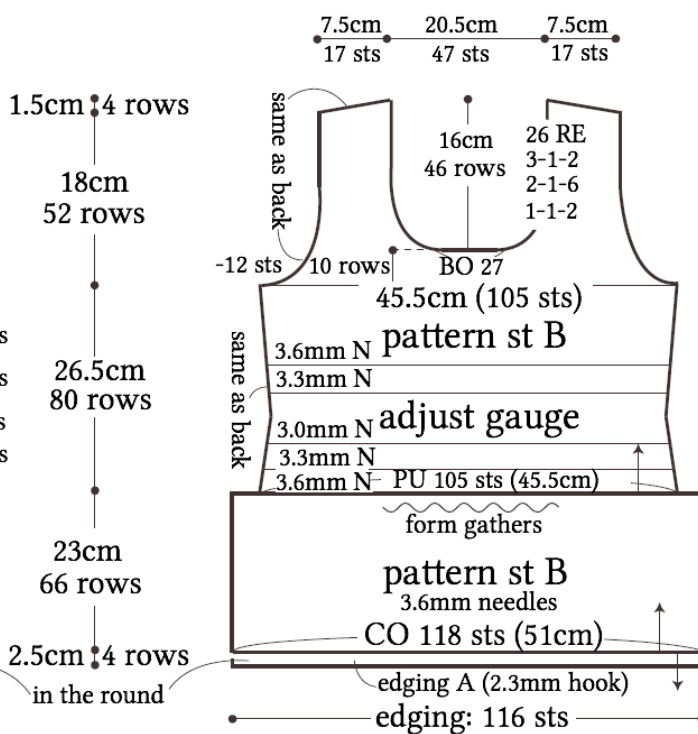
Abbreviations: BO = bind off; CO = cast on; N = needle (size); PU = pick up; RE = row(s) even

●back

N = needle (size)



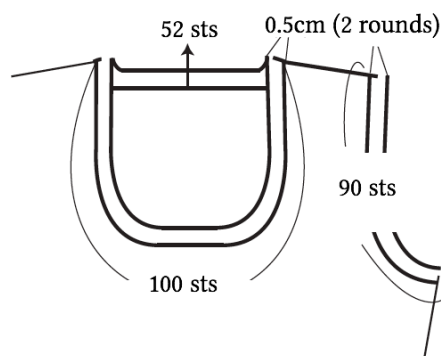
●front



※Change needle size as indicated to alter gauge.

●neckline, arm edging

edging B, 2.3mm hook



●hem edging A

2.3mm hook

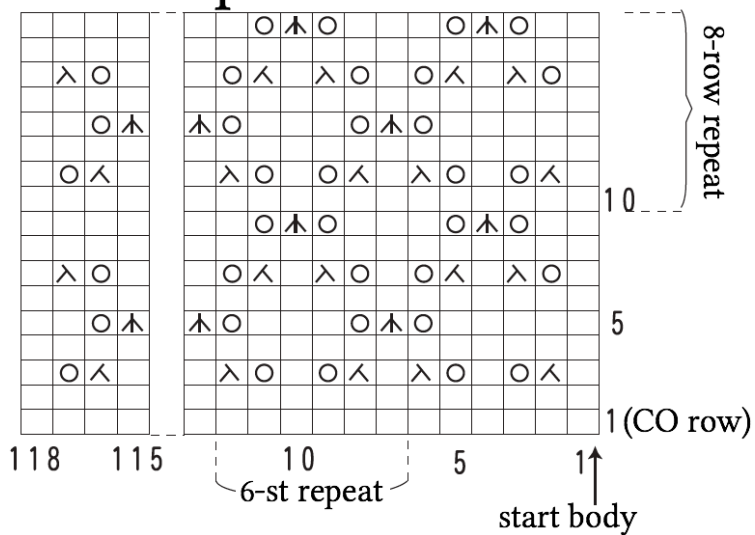


●edging B

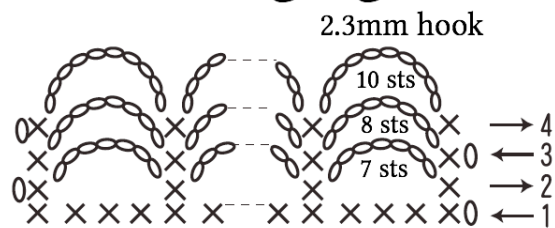
2.3mm hook



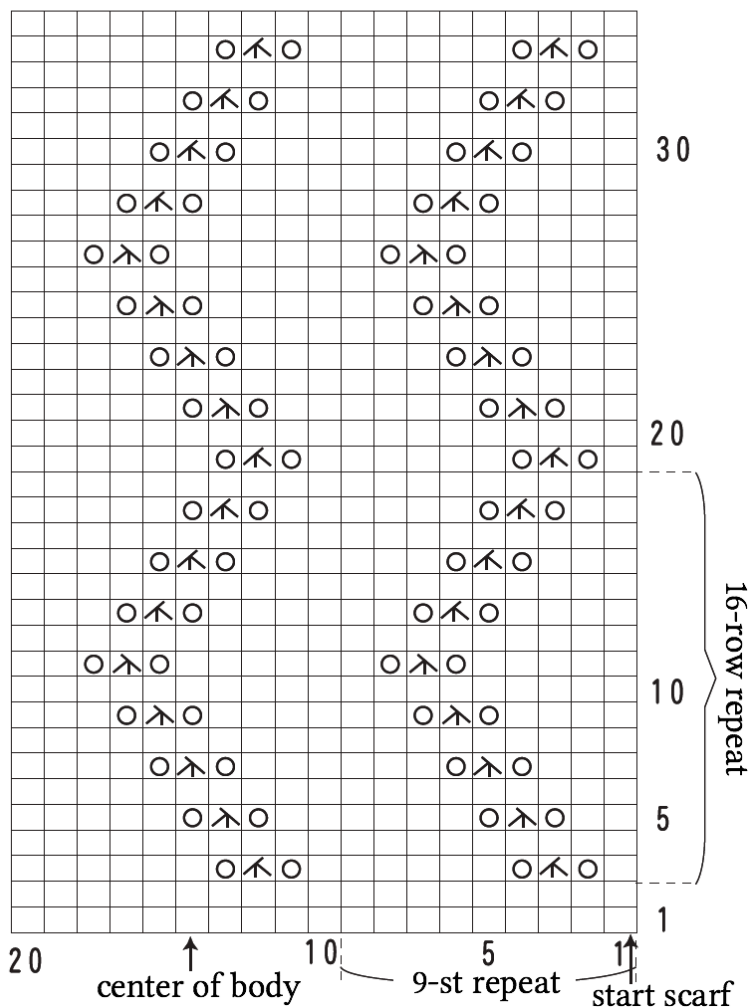
● pattern stitch A



- scarf edging A'



● pattern stitch B



●scarf

