

# 210-211-29 Baby Alpaca Tunic

© Pierrot Yarns (Gosyo Co., Ltd.). Translation by Linda Lanz.



## Materials

- Pierrot Yarns Arles [100% baby alpaca; 117 yds/107m per 1.06 oz./30g skein]; color #04 dark brown; 8 skeins [240g]
- 3.0mm (US 2½) and 3.6mm (approx. US 4 or 5) knitting needles or sizes necessary to achieve gauge – *both straight and double-pointed*
- darning needle

## Gauge

Gauge is measured in a swatch 10cm/4" square.

- pattern stitch A: 21 sts and 28 rows
- pattern stitch B: 23 sts and 28 rows

## Finished measurements

- bust 94cm/37.00"
- cross back width 55cm/21.65"
- length 70cm/27.56"

## Knitting Tips

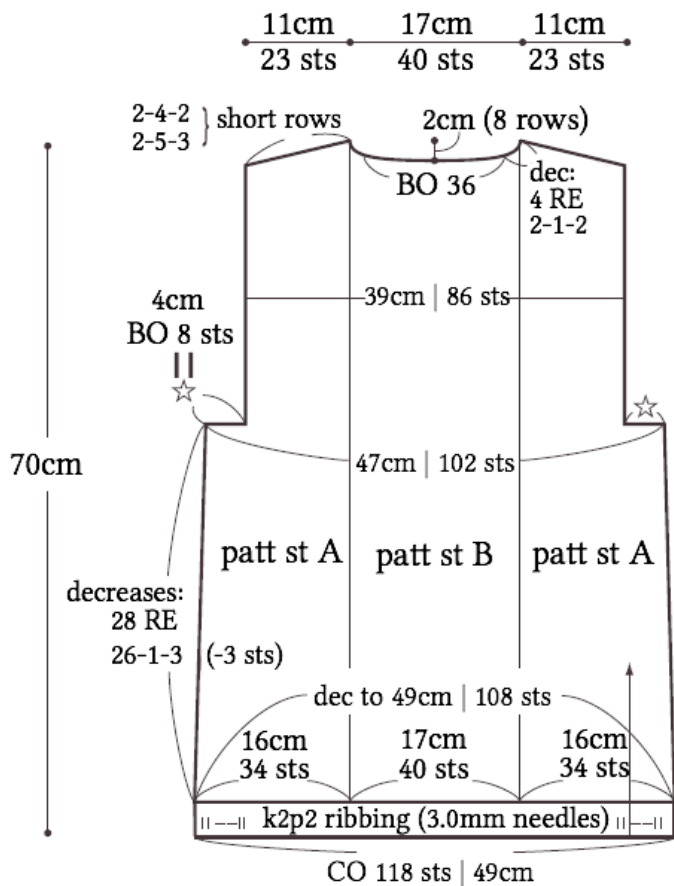
Cast on using long-tail cast-on and knit until shoulders following schematics. At shoulders, place stitches on hold. Join shoulders with three-needle bind-off.

Pick up stitches around armhole and knit cuffs in k2p2 ribbing. Bind off using tubular bind-off.

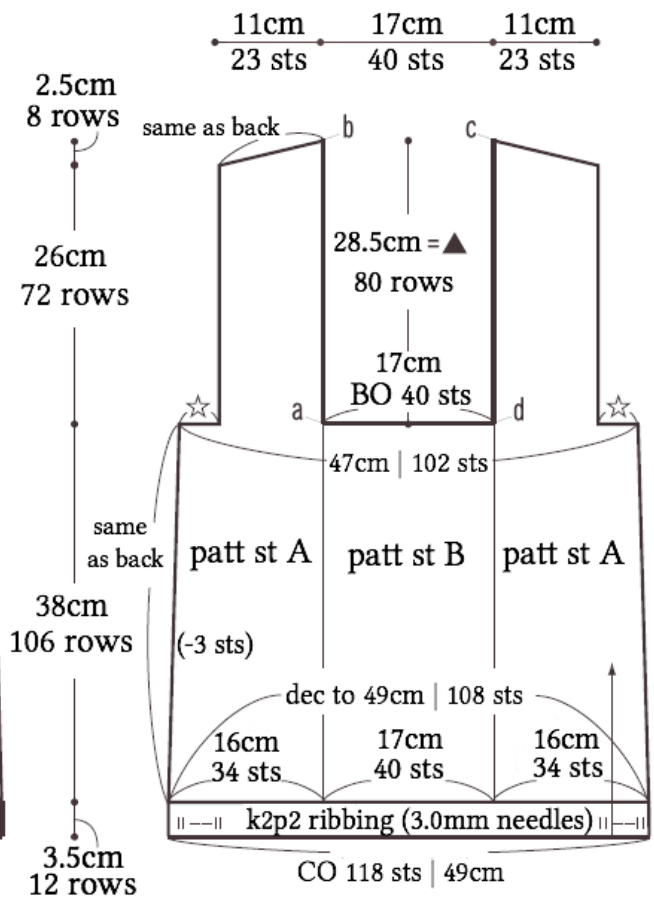
Seam sides and sleeve undersides using mattress stitch. Pick up stitches around body for collar. Place right front of collar on top of left front and seam into place with mattress stitch.

**Abbreviations:** BO = bind off; CO = cast on; dec = decrease; ms = mattress stitch; PU = pick up; RE = row(s) even

## ●back (3.6mm needles)



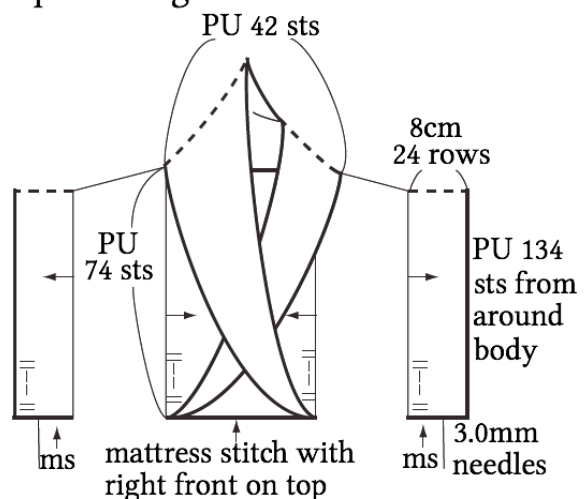
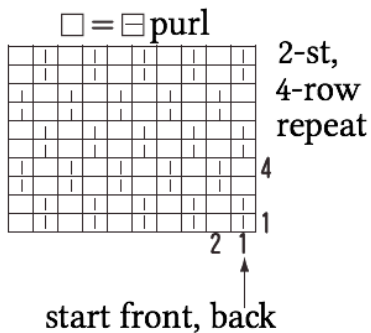
## ●front (3.6mm needles)



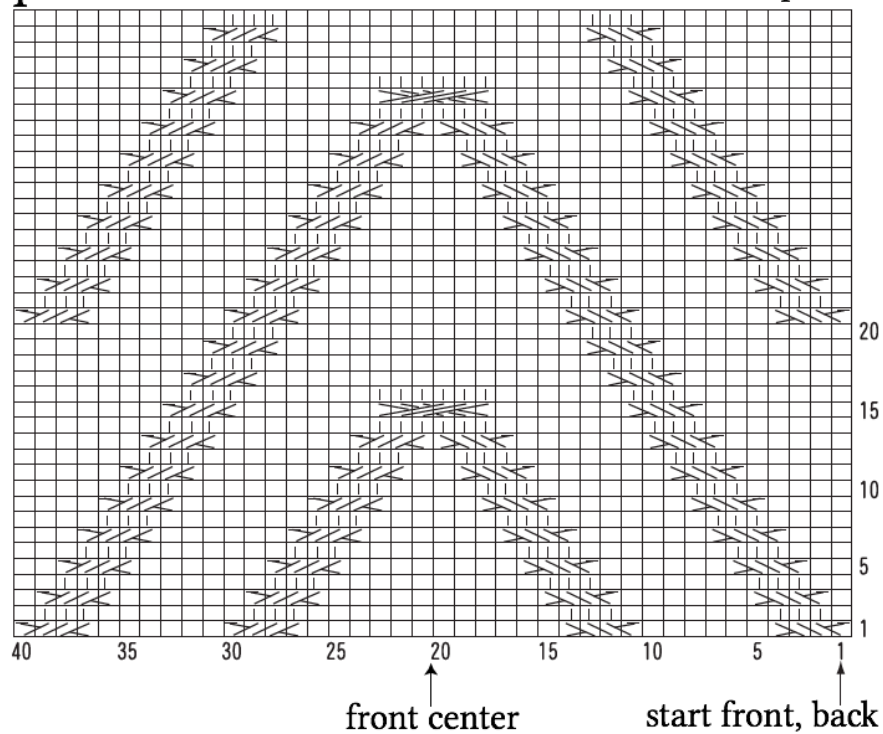
## ●collar, sleeves

k2p2 ribbing

### pattern stitch A



## pattern stitch B (40-st, 20-row repeat) □ = □ purl



## ●collar (k2p2 ribbing)

