

22-3-a Bolero

© Pierrot Yarns (Gosyo Co., Ltd.). Translation by Linda Lanz.



Materials

- Pierrot Yarns Cotton Rayon [60% rayon, 40% cotton; 547 yds/500m per 3.53 oz./100g cone]; color #1 white; 4 cones [400g] – *discontinued; please choose appropriate substitute.*
- 3.6mm (approx. US 4 or 5) knitting needles or size necessary to achieve gauge
- 2.5mm (approx. US B or C) crochet hook or size necessary to achieve gauge
- 1 button (15mm / approx. 1/8")

Gauge

- pattern stitch: 29 sts and 28 rows = 10cm/4" square

Finished measurements

- bust 92cm/36.22"
- cross back width 34cm/13.39"
- length 43cm/16.93"
- sleeve length 23cm/9.06"

Knitting Tips

Body and sleeves: Cast on with crochet provisional cast-on method and begin knitting. In order to create distinct scallops at hem and cuffs, begin knitting in pattern stitch from shoulder downward.

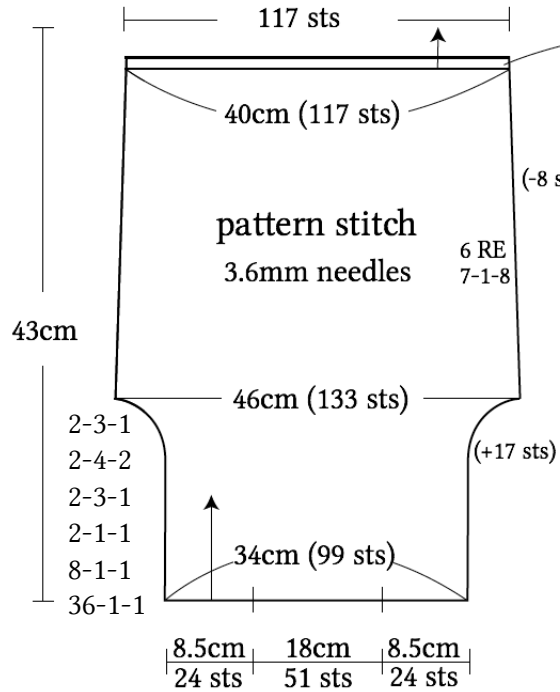
Finishing: For shaping at armholes, neckline, and sleeve caps, work 1-stitch increases by working a yarn over (YO); on next row, twist YO when working it. When increasing 2 or more stitches, use backwards loop cast-on. Take out provisional cast-on edge at shoulders; with right sides facing, seam front and back shoulder with slip stitch seam. Seam sides with mattress stitch. Crochet edging around hem, front edges, and neckline, taking care to spread edging stitches evenly. Join sleeves to body with slip stitch seam.

Note: entire garment worked with two strands of yarn held together.

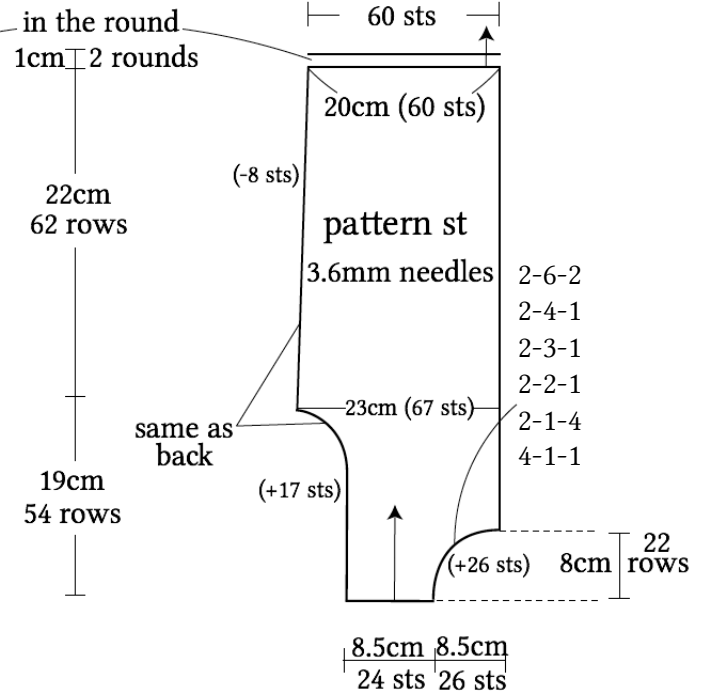
※ Hem and cuffs will take scallop shape from arrangement of pattern stitch.

Abbreviations: CO = cast on; RE = row(s) even

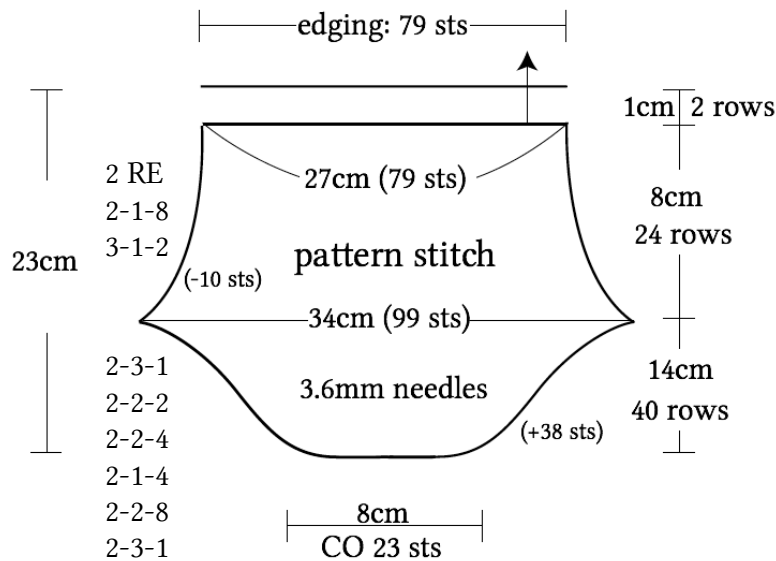
●back



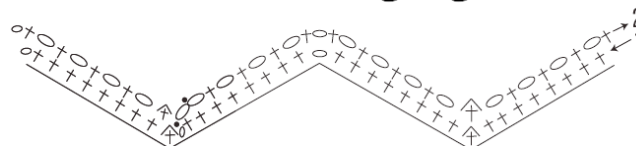
●front



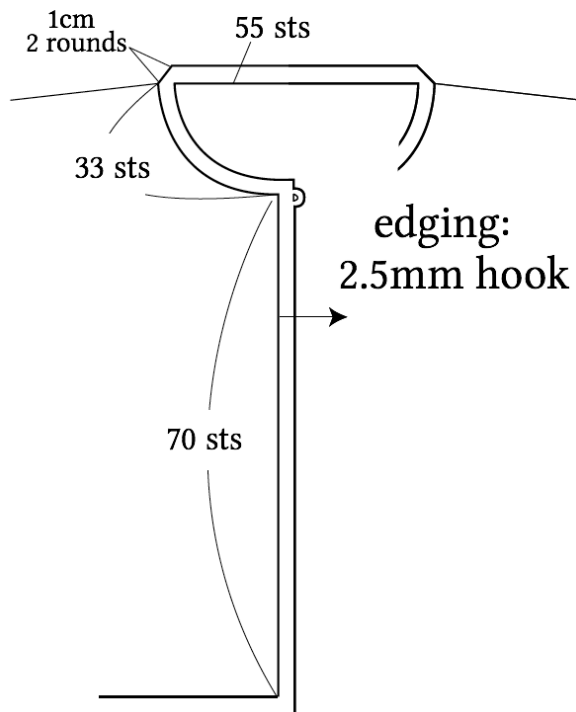
●sleeve



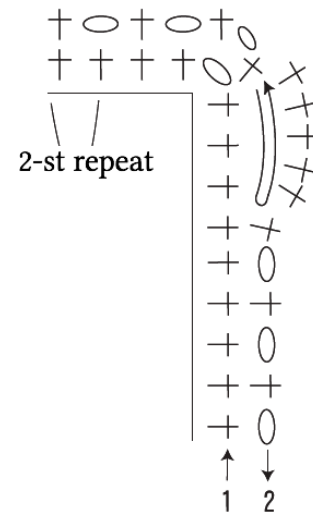
●hem & cuff edging



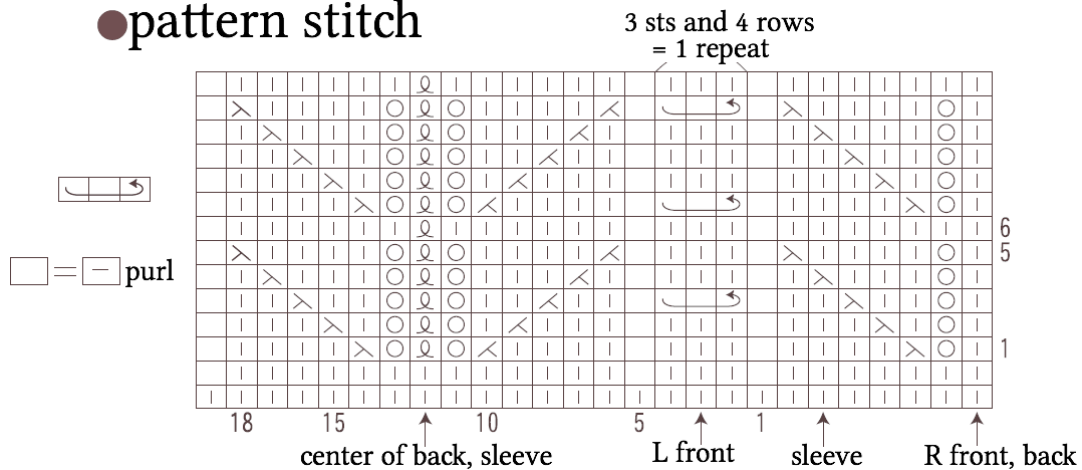
●collar, front band



●edging: collar, front band, buttonholes



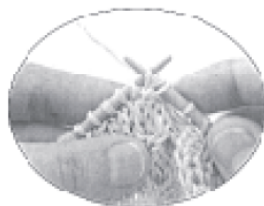
●pattern stitch



□ instructions



1) Slip 3 sts knitwise to R needle.



2) Return 3 sts to L needle. (This twists sts.)



3) Knit 3 sts.



4) Completed crossover pattern.