

26-27-15 Cardigan

© Pierrot Yarns (Gosyo Co., Ltd.). Translation by Linda Lanz.



Materials

- Pierrot Yarns Junmo Namibuto2 [100% superwash wool; 79 yds/72m per 1.41 oz./40g skein]; color #28 light peach; 11 skeins [440g]
- 4.5mm (US 7) knitting needles or size necessary to achieve gauge
- 4.0mm (US G) crochet hook or size necessary to achieve gauge
- 5 buttons (18mm / approx. 0.71")

Gauge

- pattern stitch: 21 sts and 26 rows = 10cm/4" square

Finished measurements

- bust 93cm/36.61"
- cross back width 36cm/14.17"
- length 58.5cm/23.03"
- sleeve length 52cm/20.47"

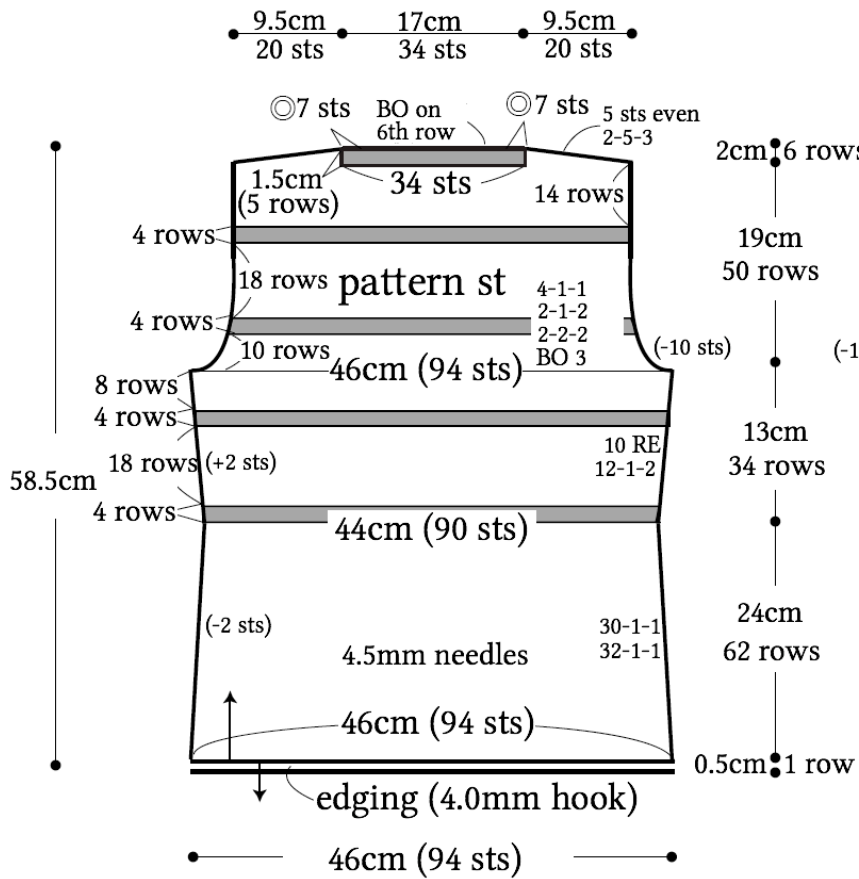
Knitting Tips

Body and sleeves: Cast on with crochet provisional cast-on method and knit in pattern stitch. Shape sides using k2tog (or ssk) for edge decreases and lifted increases for increases. Shape armholes and neckline by binding off stitches and decreasing with k2tog (or ssk). Work front of collar and front placket together with front body. Shape shoulders with short rows. Knit front placket, working buttonholes in right front placket only. Knit sleeves following same general method as body.

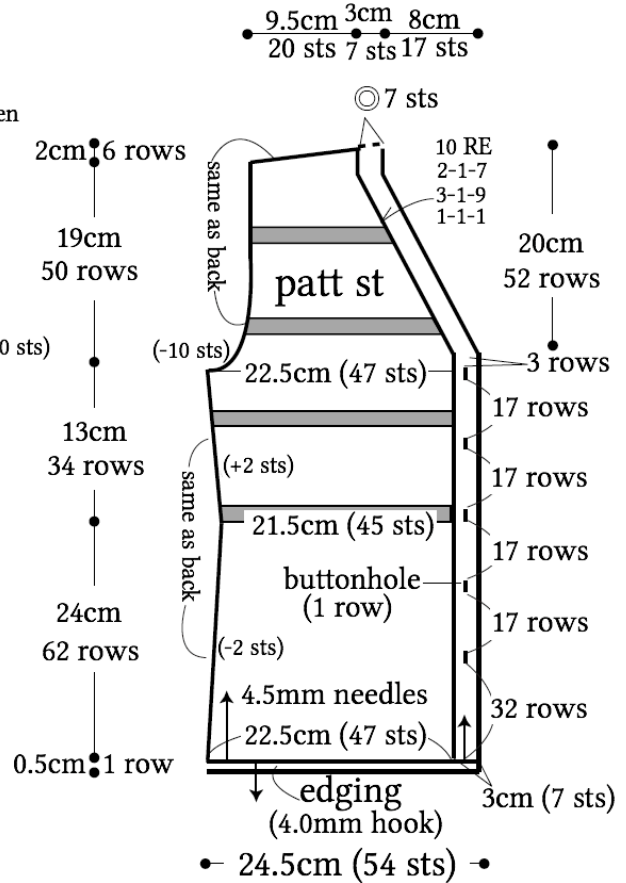
Finishing: Join shoulders with three-needle bind-off. Seam sides and sleeve edges with mattress stitch. Seam front collar to back collar with mattress stitch where indicated. Working edging into live stitches from provisional cast-on edge at hems and cuffs. Join sleeves to body with slip stitch.

Abbreviations: BO = bind off; RE = row(s) even

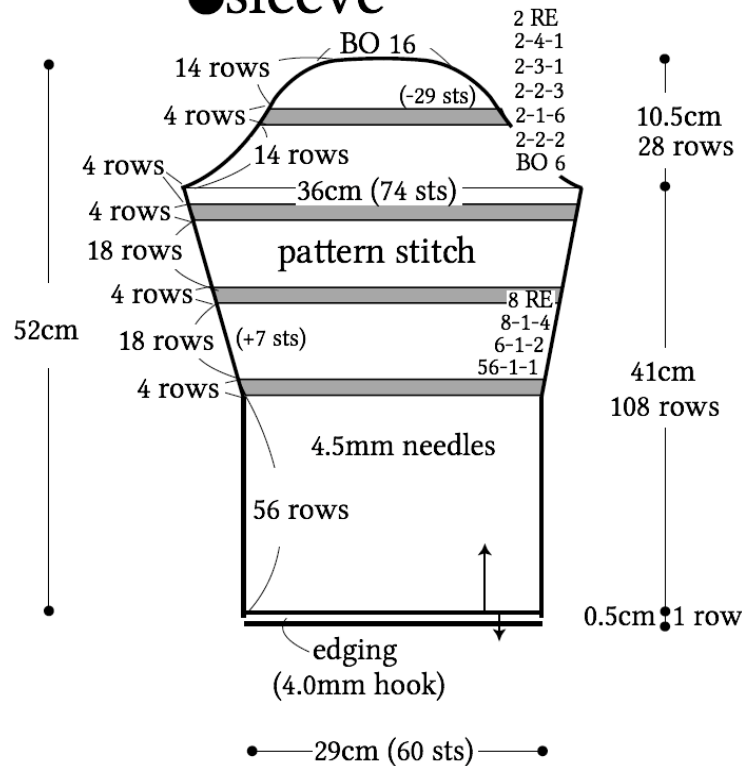
●back



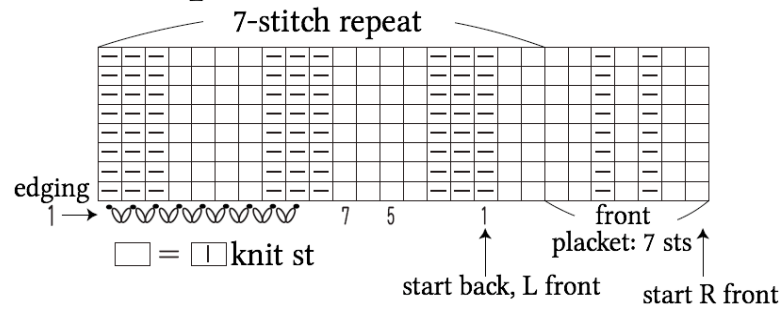
●front



●sleeve



● pattern stitch



● front collar, buttonholes (R side)

