

26-13 Cotton Neat Tee and Hat

© Pierrot Yarns (Gosyo Co., Ltd.). Translation by Linda Lanz.



Materials

- Pierrot Yarns Cotton Neat [100% cotton; 58 yds/53m per 1.41 oz./40g skein];
 - tee: color #619 dark brown; 9 skeins [340g]
 - hat: color #619 dark brown; 2 skeins [50g]
- 4.5mm (US 7) and 5.1mm (approx. US 8) knitting needles or sizes necessary to achieve gauge
- 4.5mm (US 7) circular knitting needle or size necessary to achieve gauge
- 5.1mm (approx. US 8) double-pointed knitting needles or size necessary to achieve gauge

Gauge

- stockinette stitch: 16 sts and 22 rows = 10cm/4" square

Finished measurements

- bust 92cm/36.22"
- cross back width 54cm/21.26"
- tee length 57cm/22.44"
- head circumference 47.5cm/18.70"
- hat length 22cm/8.66"



Knitting Tips

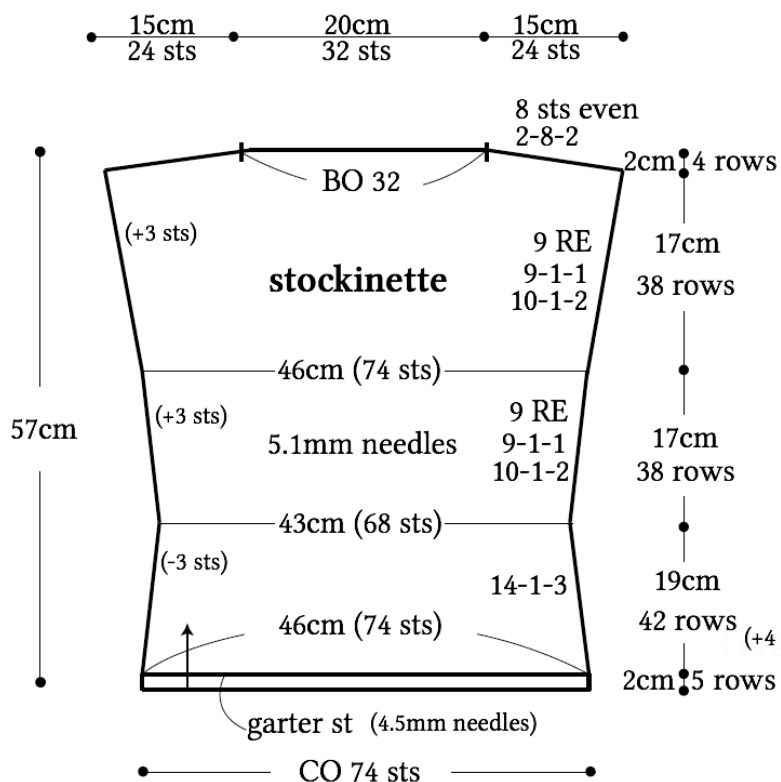
Body: Cast on with long-tail cast-on and knit 5 rows of garter stitch. Then work in stockinette stitch. On front, work stockinette with central cable panel. Work fully fashioned increases and decreases for sides and armholes (1 stitch in from edge). Place shoulder stitches on stitch holder.

Finishing: Join shoulders with three-needle bind-off. Pick up stitches around neckline and armholes and knit garter stitch in the round. Bind off in pattern. Join sides with mattress stitch.

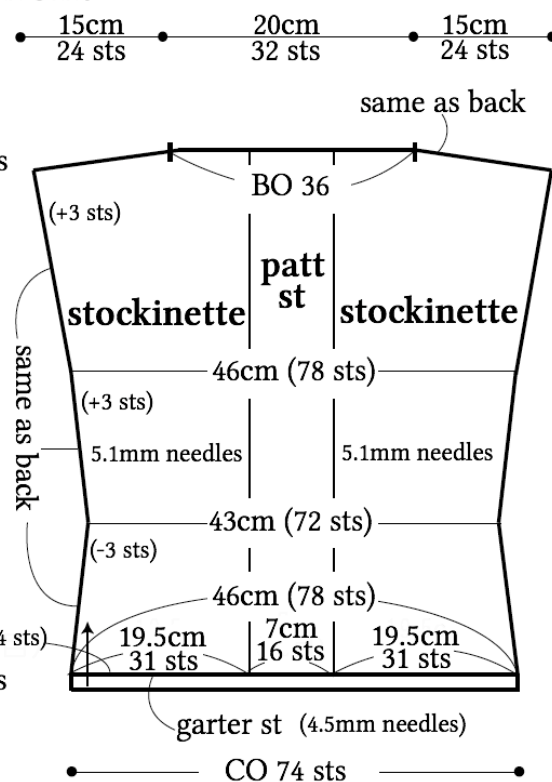
Hat: Cast on with crochet provisional cast-on method and knit stockinette stitch in the round. Starting from round 18, work decreases as indicated in schematic. Draw yarn through remaining 10 stitches and cinch shut. Remove provisional cast-on edge and knit repeats of [4 rounds reverse stockinette stitch and 3 rounds stockinette stitch] as indicated. Knit 2 rounds of k1p1 ribbing, then bind off using tubular cast-off method.

Abbreviations: BO = bind off; CO = cast on; DPNs = double-pointed knitting needles; PU = pick up; RE = row(s) even; rep(s) = repeat(s)

●back



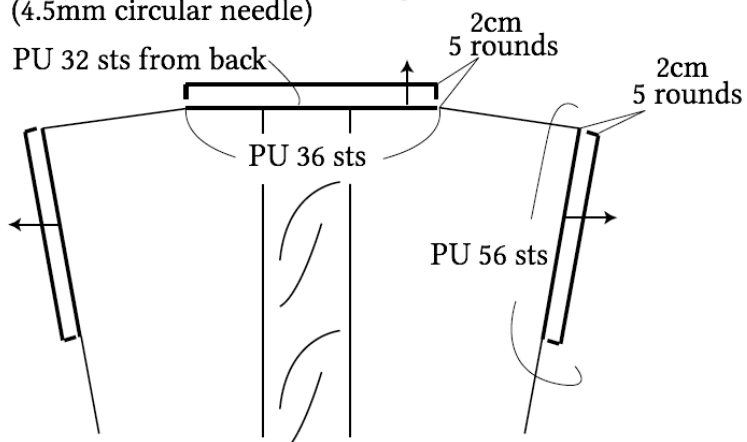
●front



●collar & sleeves (garter st)

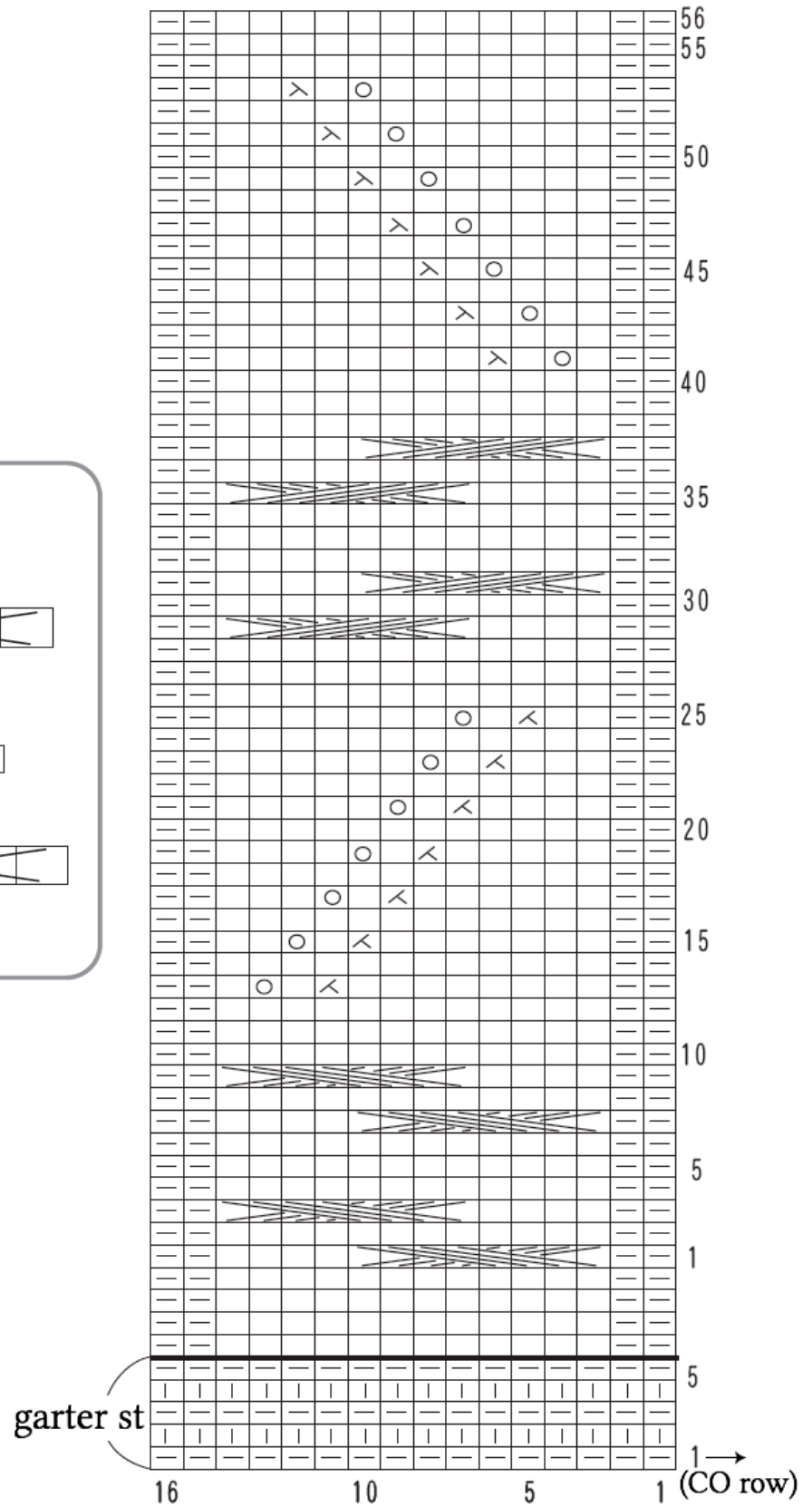
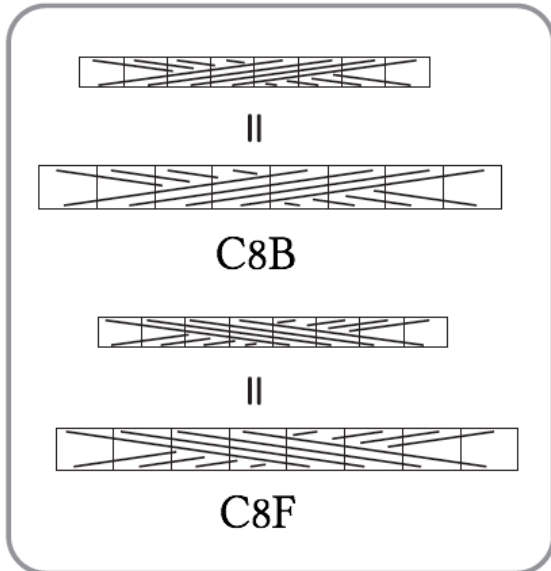
(4.5mm circular needle)

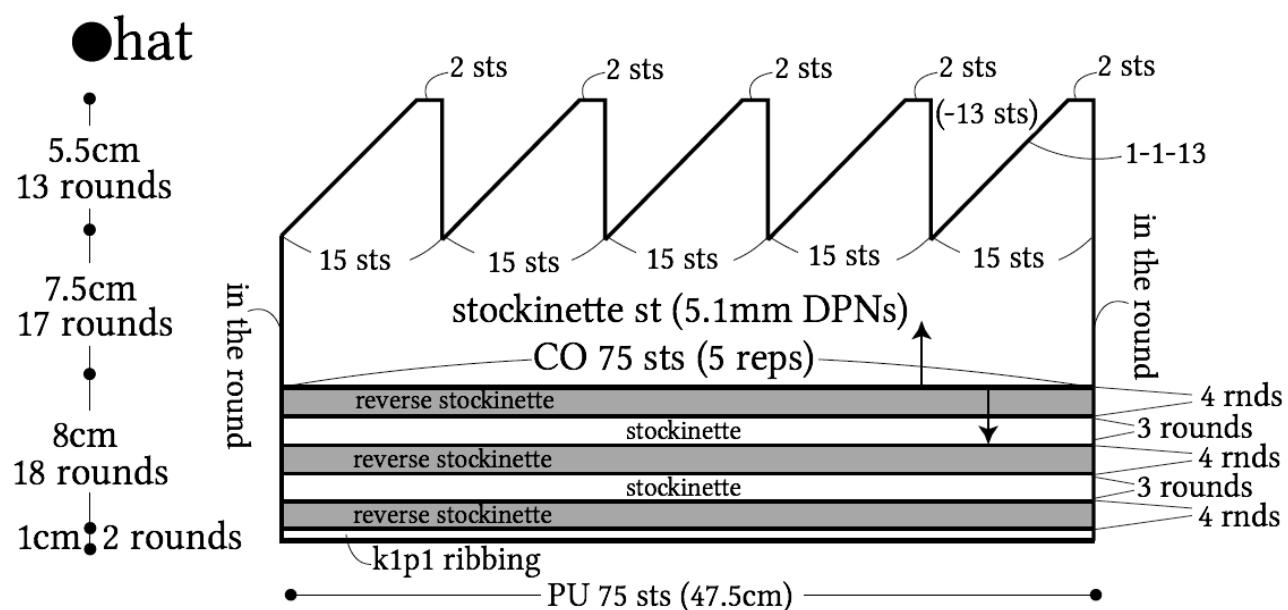
PU 32 sts from back



● pattern stitch

□ = □ knit stitch





●hat pattern & decreases

