

# 210-37 Celebrity Sunhat

© Pierrot Yarns (Gosyo Co., Ltd.). Translation by Linda Lanz.



## **Materials**

- Pierrot Yarns Ethnic Jute [100% jute; 295 yds / 270m per 3.2–3.5 oz / 90–100g hank]; color #21 ivory; 2 hanks [120g]
- Pierrot Yarns Ramie 100 [100% ramie; 109 yds / 100m per 1.41 oz / 40g skein]; color #3 pale smoke pink; 1 skein [35g]
- 2.5mm (US B or C) crochet hook or size necessary to achieve gauge
- 3.3mm (US 3) knitting needles or size necessary to achieve gauge
- tapestry needle
- 6.5m / 7.1 yd length of [teknorote](#) (0.7mm thickness) or similar stiff cord, such as nylon monofilament

## **Gauge**

Gauge measured in a swatch 10cm/4" square.

- single crochet (US): 23 sts and 26.5 rows
- pattern stitch: 22.5 sts and 30 rows

## **Finished measurements**

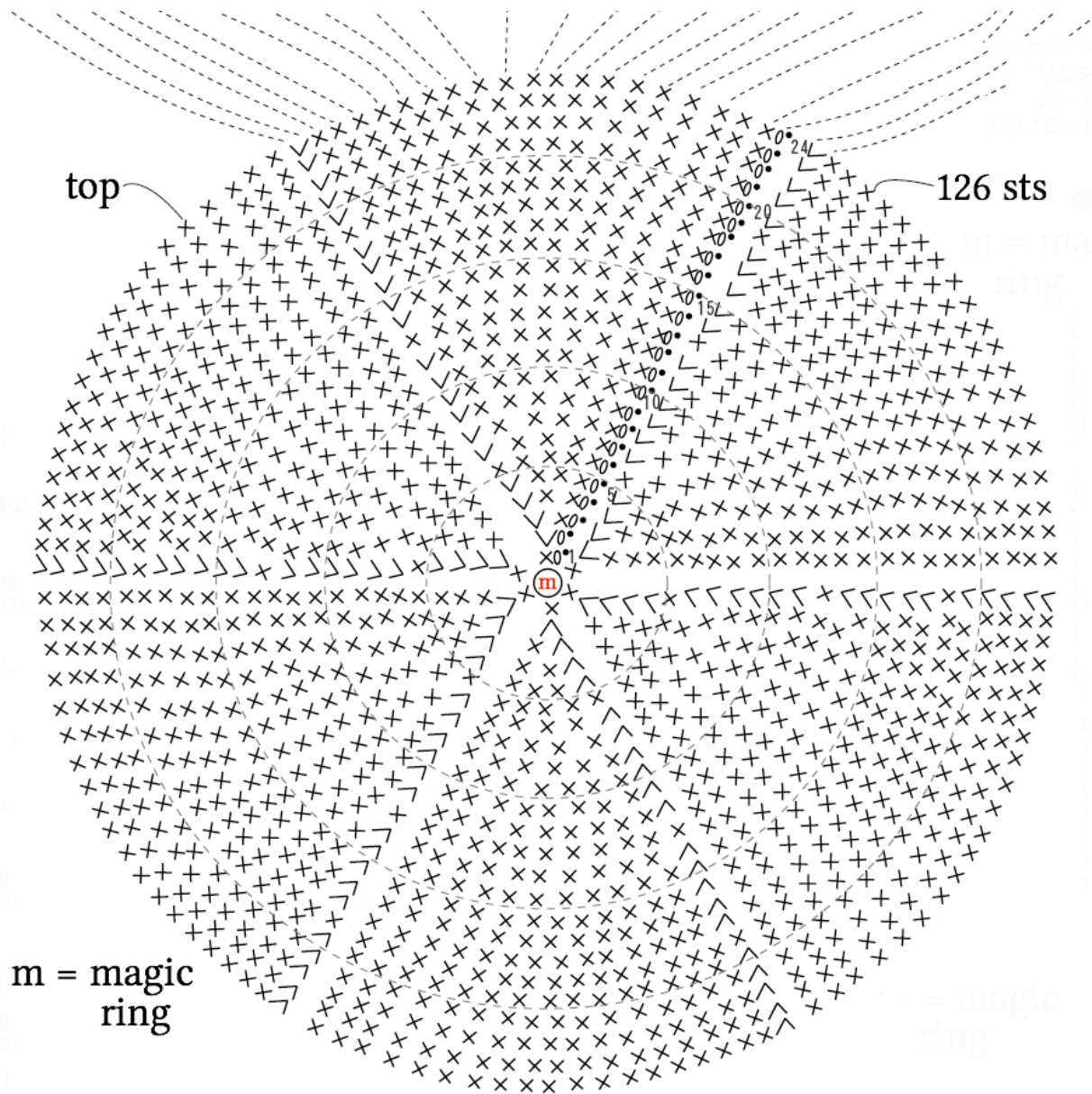
- head circumference 54cm/21.25"

### **Crochet Tips**

**Hat:** Cast on using magic ring. Work in single crochet (US) according to diagrams. On the last 6 rounds, work single crochet stitches around nylon cord (teknorote), thus incorporating it into the stitches. (If stiffer brim is desired, begin working cord into brim stitches several rounds earlier.)

**Ribbon:** Cast on and knit according to the chart. Bind off in pattern. Seam first and last rows with whipstitch. Gather the ribbon in three places and attach to hat (with gathers placed evenly around), placing seam at back.

Note: dotted lines indicate where round 24 in top of hat continues to round 25 of side.



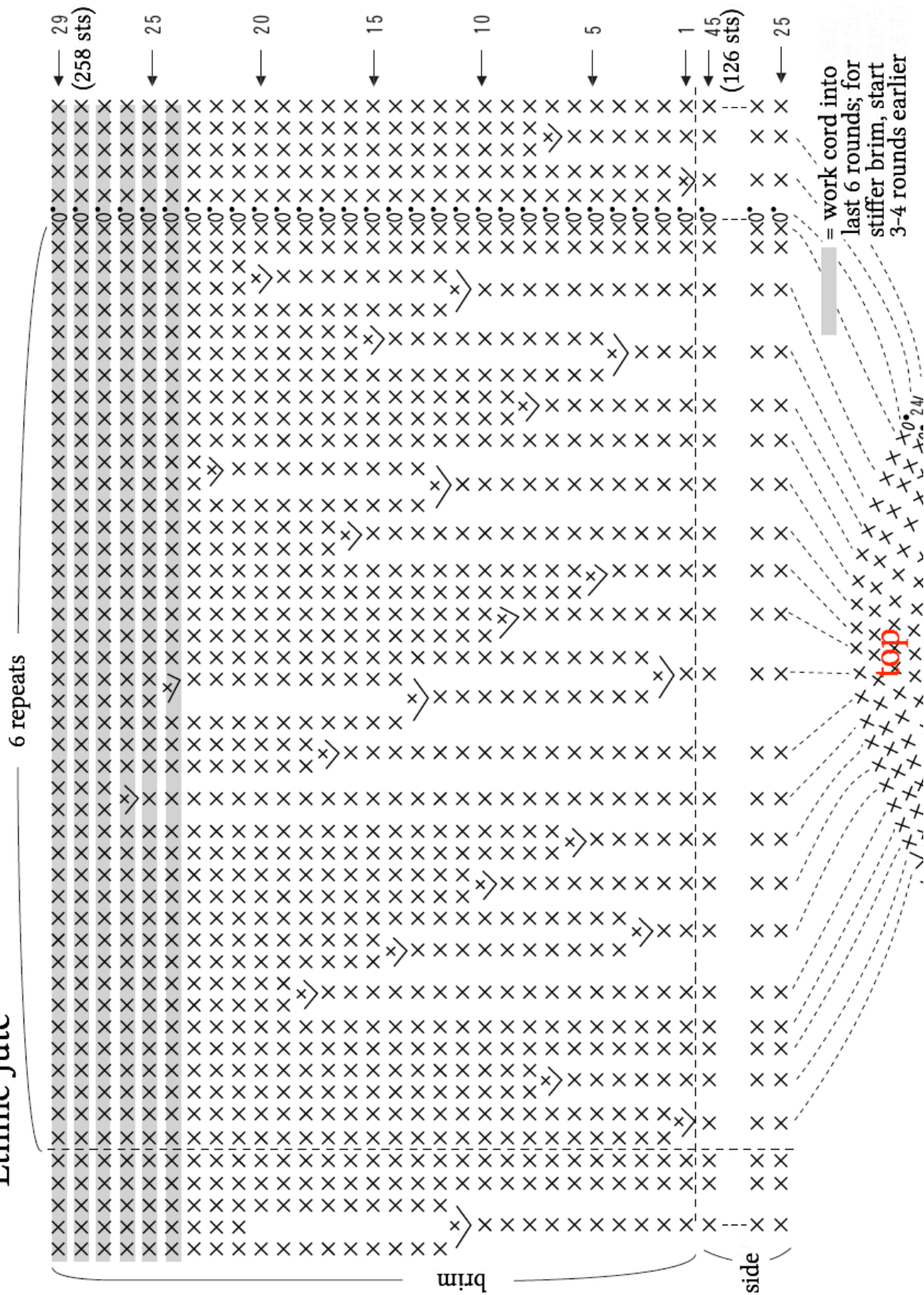
**Top/side**

round	# of sts	round	# of sts	round	# of sts	round	# of sts	round	# of sts
1	6 (CO row)	7	36	13	66	19	96	25-45	126
2	12	8	42	14	72	20	102		
3	18	9	48	15	78	21	108		
4	24	10	54	16	84	22	114		
5	30	11	60	17	90	23	120		
6	30	12	66	18	96	24	126		

**Brim**

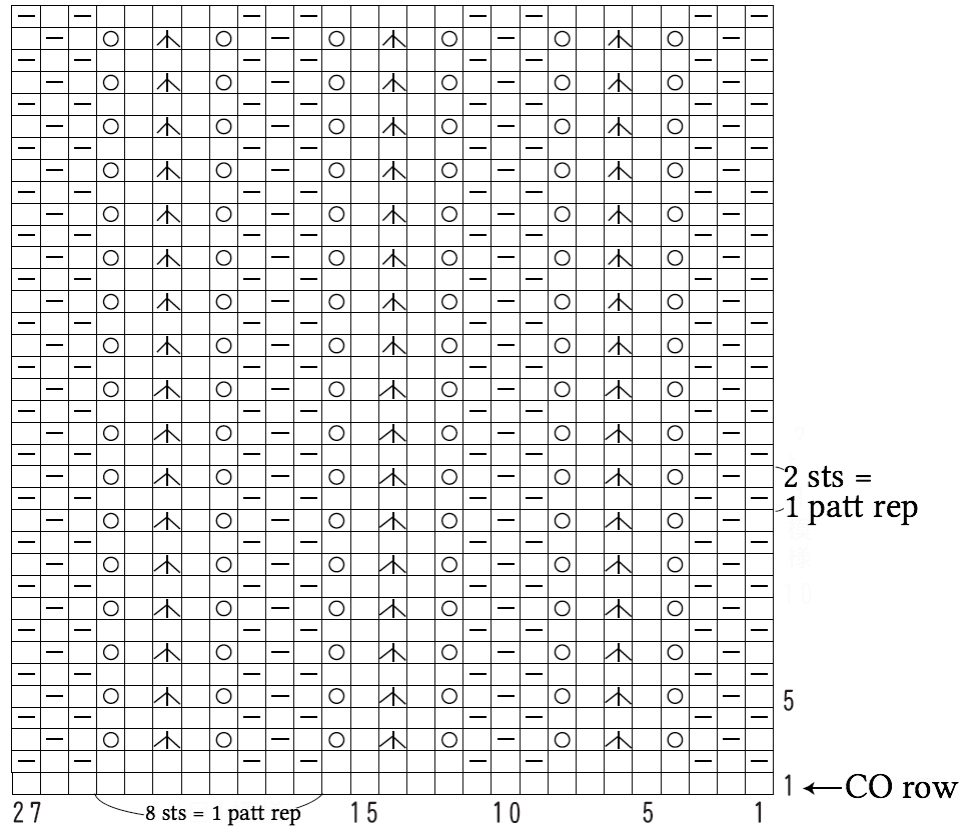
round	# of sts	round	# of sts	round	# of sts	round	# of sts	round	# of sts
1	132	6	162	12	198	17	228	26-29	258
2	138	8	174	13	204	18, 19	234		
3	144	9	180	14	210	20, 21	240		
4	150	10	186	15	216	22, 23	246		
5	156	11	192	16	222	24, 25	252		

● hat (2.5mm hook)  
Ethnic Jute

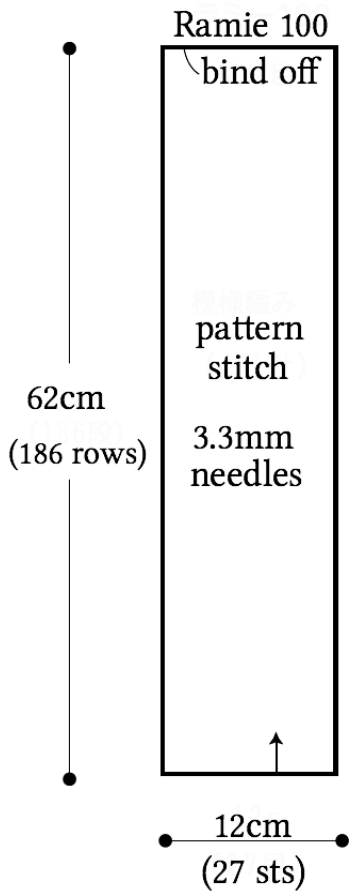


Note: dotted lines indicate where round 24 in top of hat continues to round 25 of side.

● ribbon pattern (3.3mm needles) □ = □ knit



● ribbon



● finishing

