

99-20-14 Cabled Cardigan

© Pierrot Yarns (Gosyo Co., Ltd.). Translation by Linda Lanz.



Materials

- Pierrot Yarns Pearl Lamé DK [92% wool, 8% polyester; 96 yds / 88m per 1.76 oz. / 50g skein]; color #9136; 16 skeins [780g] – *discontinued*
- 3.6mm (US 5), 4.2mm (US 6 or 7), and 4.8mm (US 8) knitting needles or sizes necessary to achieve gauge
- 6 buttons (18mm / approx. 5/8")

Gauge

Gauge is measured in a swatch 10cm/4" square.

- pattern stitch: 30 sts and 28 rows

Finished measurements

- bust 98cm/38.6"
- back width 37cm/14.6"
- back length 55cm/21.7"
- sleeve length 53cm/20.9"

Knitting Tips

Front, back: Cast on using crochet provisional cast on method and knit according to the schematic. Pick up stitches at hem and work twisted ribbing. Bind off in pattern.

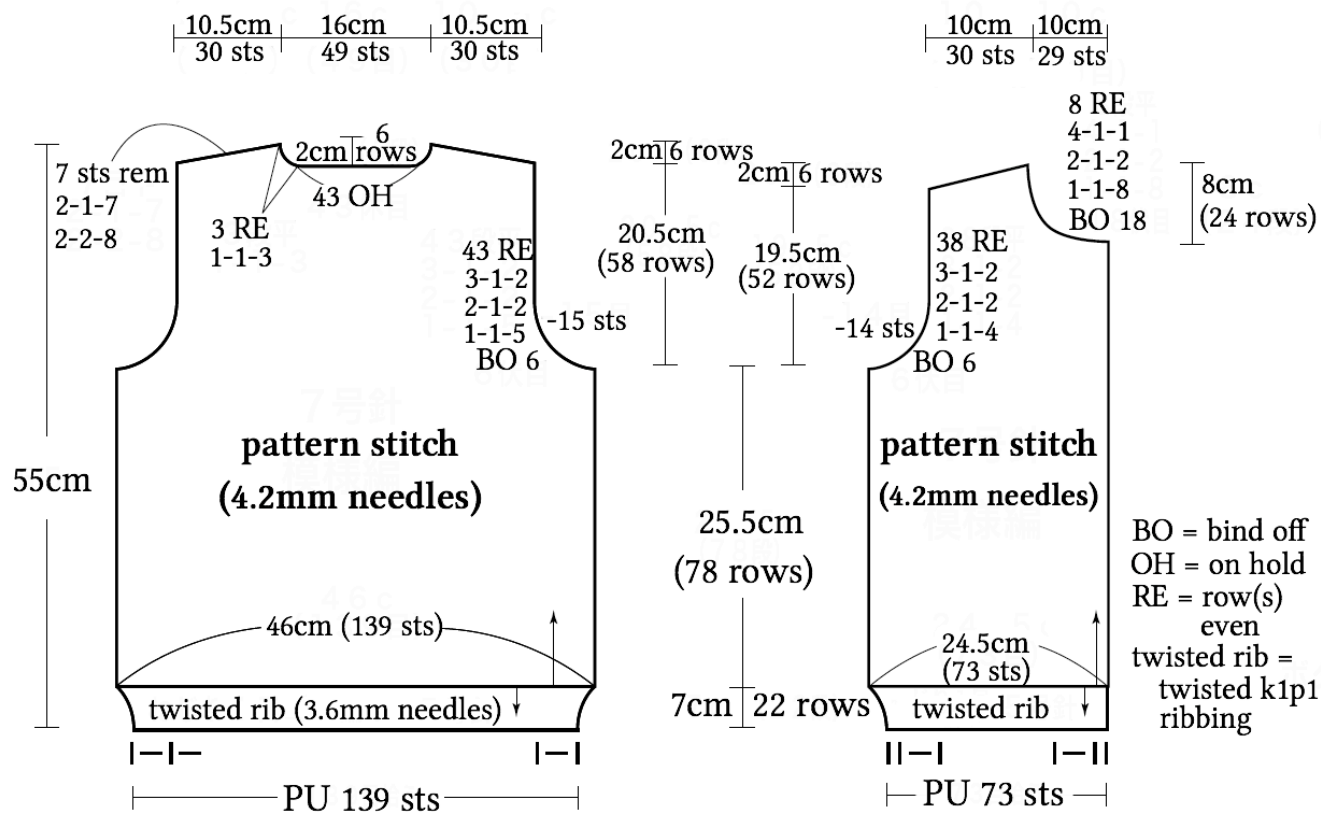
Sleeves: Begin knitting as for front and back. Work increases and decreases.

Finishing: Join shoulders with three-needle bind-off. Join sides and sleeves with mattress stitch. Pick up stitches for collar and button band and work twisted rib. (Work buttonholes in right button band). Join sleeves to body with slip stitch.

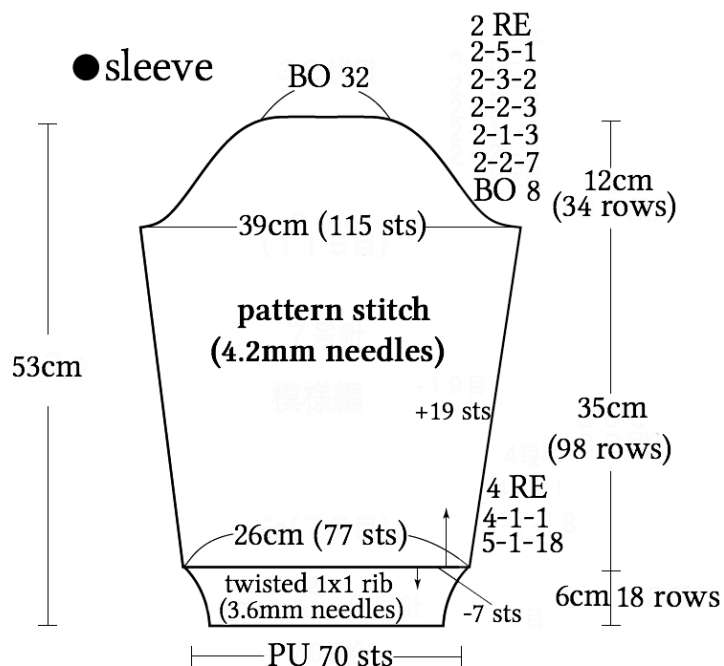
❖ Pick up stitches for collar from right side of body.

●back

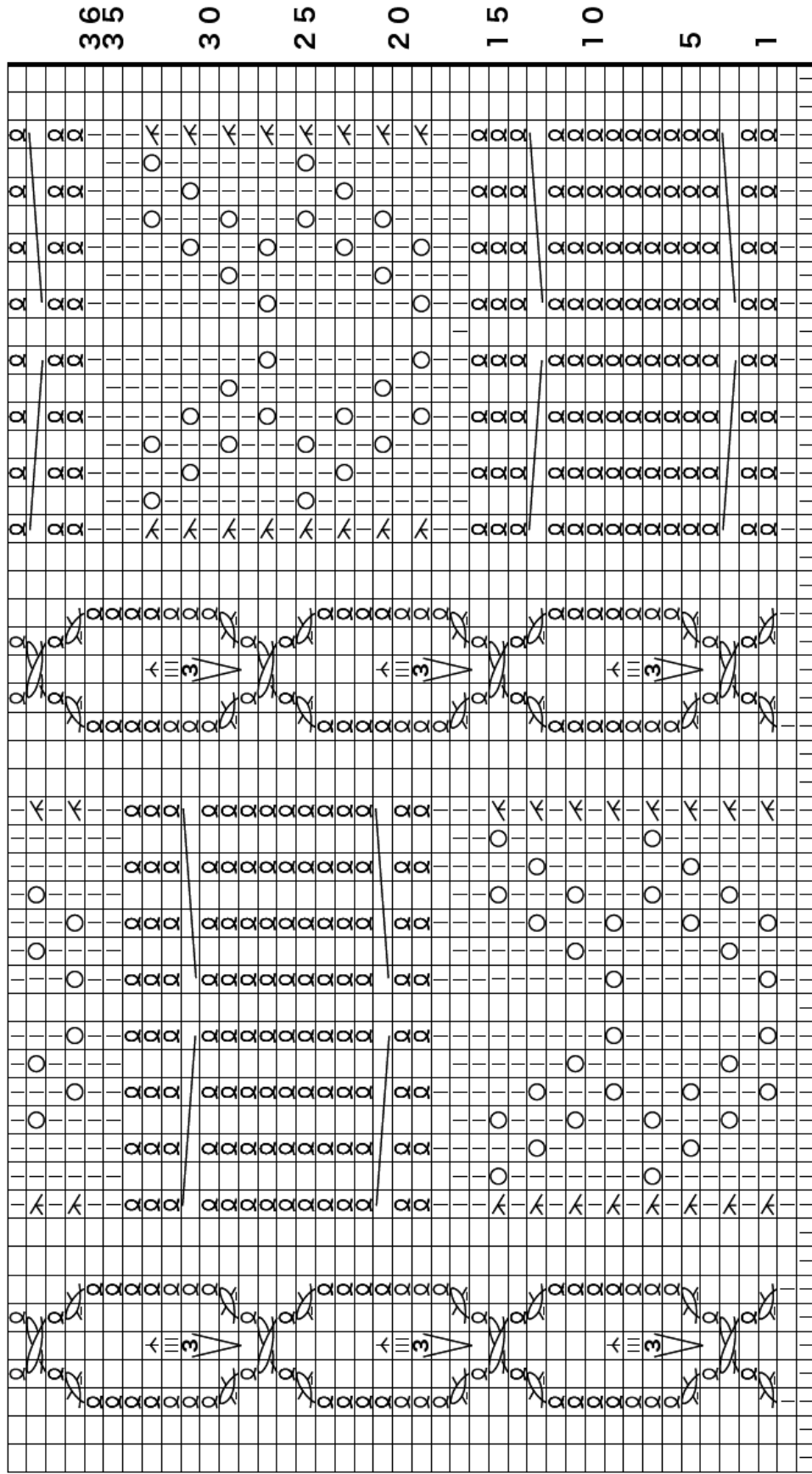
●front



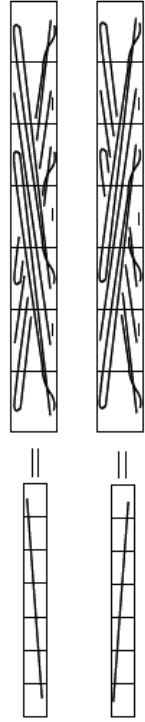
●sleeve



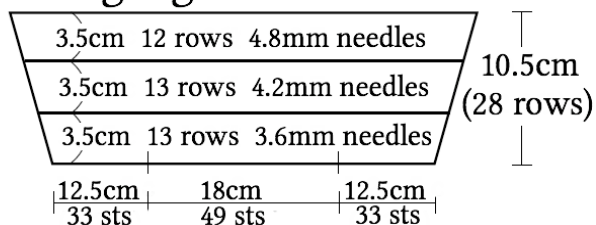
● pattern stitch □ = □ = □ purl stitch



48 45 40 35 30 25 20 15 10 5 1
 back, left front
 sleeve
 start
 right front

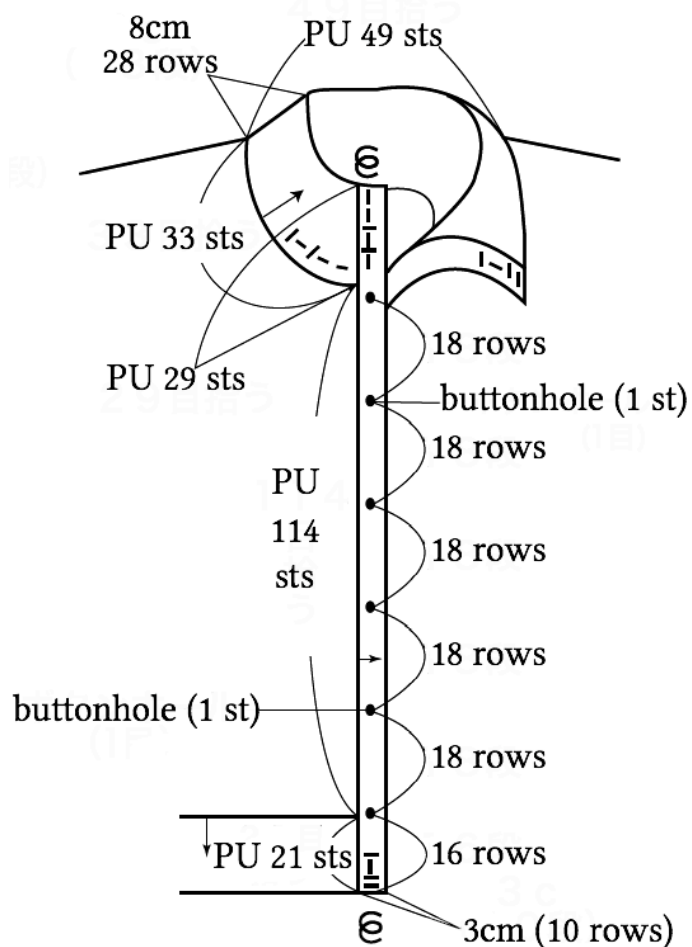


●collar gauge

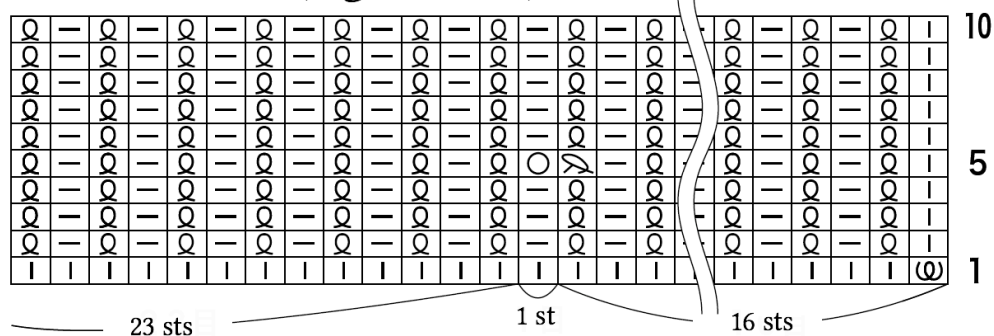


● collar, button band

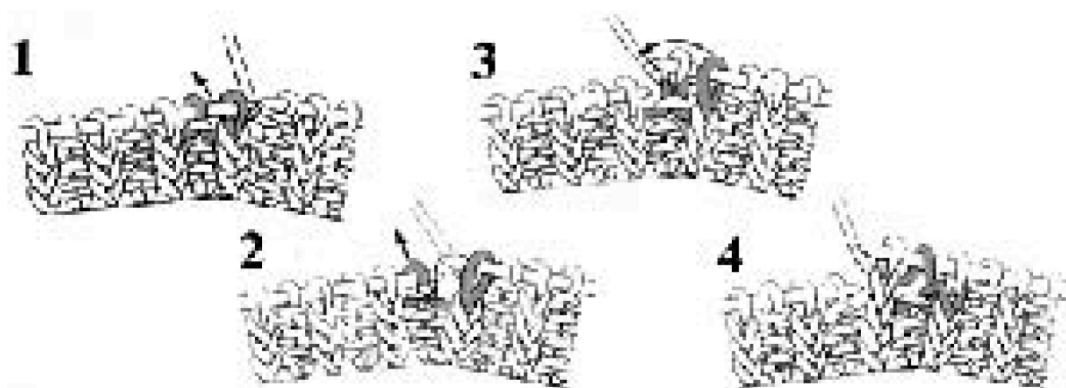
(twisted rib; 3.6, 4.2, & 4.8mm needles)



●buttonholes (right band) twisted 1x1 rib



buttonhole method



Slip next stitch knitwise, purl next stitch, slip first stitch over purl stitch. Yarn over, resume ribbing pattern with twisted knit stitch.



Row 1: insert right needle into third row down of first stitch on left needle (but do not drop left stitch). Pull up three loops with right needle, forming three new stitches (but do not knit them). Continue with rest of row as established.

Row 2: knit these three stitches purlwise.

Row 3: slip 2 stitches knitwise, k1, pass 2 slipped stitches over the k1 just worked.



Slip first stitch on left needle onto cable needle purlwise and hold in front of work. Slip second stitch on left needle onto another cable needle purlwise and hold to the back of work. Work twisted knit stitch on next stitch on left needle. Purl stitch on back holder. Work twisted knit stitch on stitch on front stitch holder.